

# STITCH & ANGEL plush



a free sewing pattern by



# stitch & angel plush

This cuddly plush is made to look like the lovable Stitch from Lilo & Stitch! He comes alongside his adorable girlfriend Angel. The plush itself has floppy arms and legs that make it fun to hug. But it also has large floppy ears, and options to make an alien stitch with 4 arms and antennae. Though you could easily make his disguised version by leaving off those extras.

## DIFFICULTY:



The most difficult part of this plush is likely sewing the legs and arms into the body. It gets a bit crowded so it helps to take it one section at a time until the body is done.

## SKILLS USED:

- Fusible web applique
- Curved sewing
- Basting
- Darts
- Ladder stitch
- Sewing small pieces
- Matching notches and points

## MAKES:

**ONE PLUSH:** about 9" tall from bottom of body to top of head, 6" wide from each side of head, and 6" long from nose to back of head.



**sew desu ne?**

| [WWW.CHOLYKNIGHT.COM](http://WWW.CHOLYKNIGHT.COM) |

**MATERIALS & TOOLS:**

- 1/3 yd. of fabric for main body
- 1/4 yd. (or 9" x 13") of light accent fabric for belly and chin
- 1/4 yd. (or 9" x 10") of pink fabric for inner ears
- 1/8 yd. of dark accent fabric for nose, claws, and ear tips
- **FOR EARS THAT STAND BETTER:** 2 pipe cleaners & hot glue
- 3" x 7" piece of light applique fabric (flannel, felt, fleece, cotton, etc.) for eye panels
- 3" x 3" scrap of black applique fabric for eyes
- 2" x 2" scrap of white applique fabric for eye shines
- 8" x 8" scrap of dark accent applique fabric for head markings & paw pads
- 9" x 9" piece of light or heavy duty fusible web
- sewing thread to match main fabric and applique fabrics
- poly-fil stuffing
- basic sewing tools (sewing machine, scissors, iron, needles, pins, fabric marker, seam ripper)



**MINKY VS. FELT**



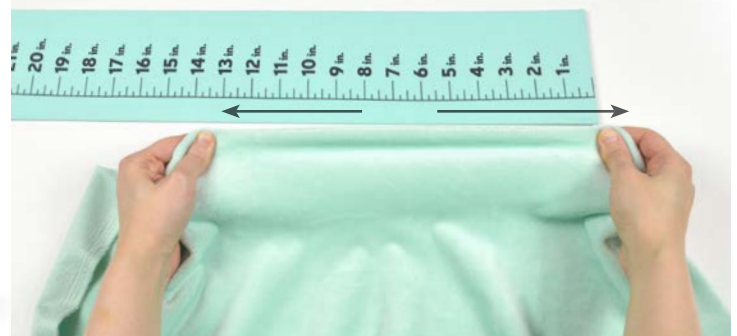
**SUGGESTED FABRICS:**

**MINKY OR FLEECE**

Medium weight, plush fabrics with about 20%-30% stretch along the crosswise grain work best for this project. The varieties shown to the left are some good options and names to look for. Try to avoid heavyweight versions of fleece that are intended for outdoor apparel or they may cause trouble for the detailed areas.

You can also use non-stretch fabrics (such as felt), but be aware that the curves will be more difficult to sew and the result will look different. The plush will become more elongated and the edges will look harder.

10" of minky stretches to 13" = 30% stretch



**sew desu ne?**

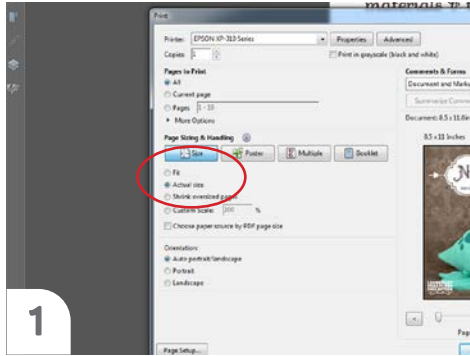
| [WWW.CHOLYKNIGHT.COM](http://WWW.CHOLYKNIGHT.COM) |

**PRINTING THE PATTERN:**

Set your computer to print **PAGES 31-38.**

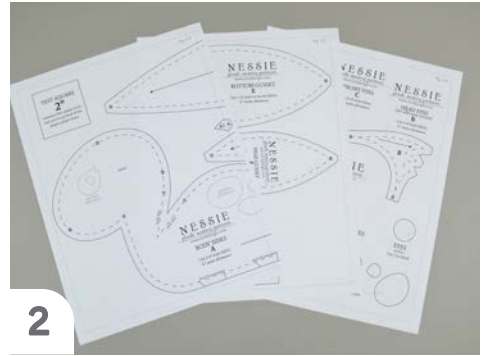
If you're unfamiliar with printing and assembling a .pdf pattern, read the steps to follow.

For the best results, use a .pdf reader like **ADOBE READER.** That's what is shown here and will give you the most control over the settings.



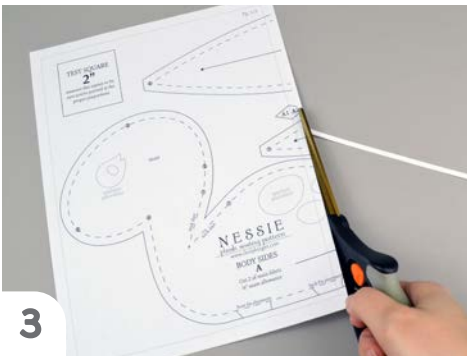
1

At the print dialog box, check the box that says print at "Actual Size" or 100%. Any other selection (such as "Fit to page") will distort the pattern so it's slightly larger or smaller and we don't want that.



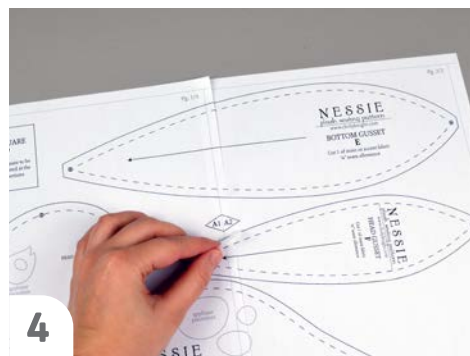
2

Print the pages needed for the file. You might have one or more. Either way, be sure you have the full collection by noting the page numbers in the corner.



3

It's likely your printer will have a margin that ensures your image doesn't print to the very edge. Assembly will be easier if you trim off this blank margin edge. This will give you pages that overlap slightly during assembly. If you trim across the gray outline boxes, this will give you pages that don't overlap but rather butt against each other.



4

To line up the pattern pages, match up the corresponding diamond shapes. Each diamond will have a letter, so it's simply a matter of matching A1 to A2, B3 to B4 and so on. The faint gray lines indicate the border of every page, you should be able to line those up as well. When the diamond goes together, tape it in place.

If you have many pages, it's easier to tape up the pages into rows first. Then tape the rows together into a full block.



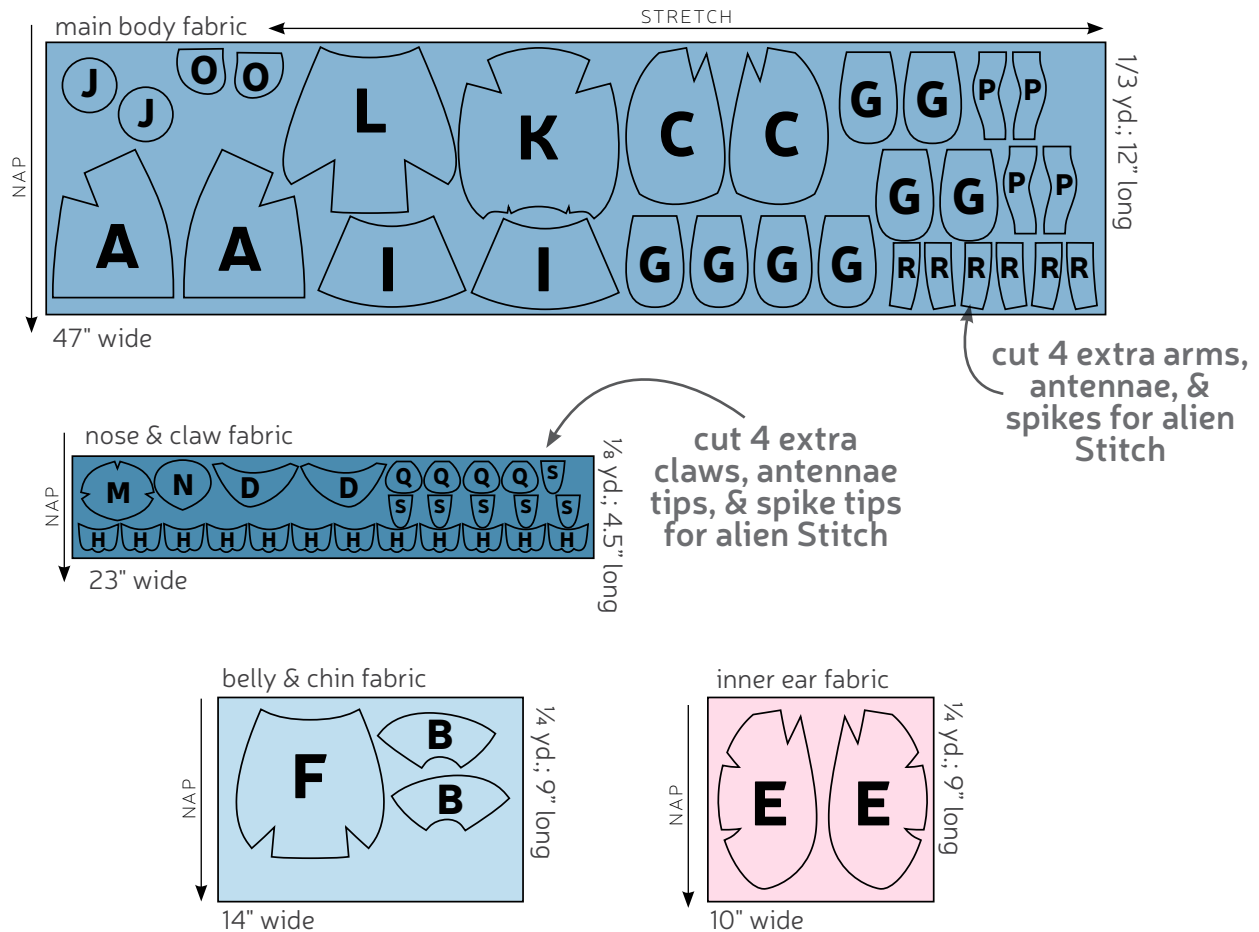
5

You can trace the patterns onto a different paper, or you can also just cut them straight from the printer paper -- be sure that each piece is fully taped together along the joins so they don't fall apart when you cut them.

## CUTTING THE FABRIC:

- Place pattern on the fabric, and make sure the stretch line matches the stretch of the fabric. The nap line should go in the direction of the fur.
- Pin the pattern in place, use pattern weights, or trace the outline of the pattern with a washable marker.
- Using the paper as a template, cut out the fabric. Cut the required amount according to the pattern.
- For all fur fabrics, shake the excess fuzz away.

## CUTTING LAYOUT:

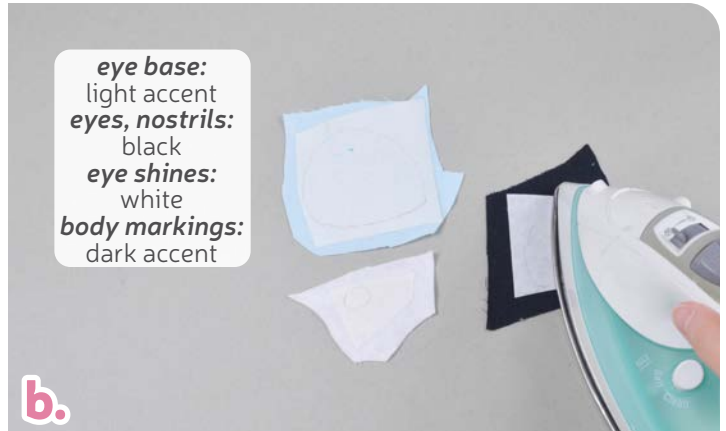


sew desu ne?

| WWW.CHOLYKNIGHT.COM |

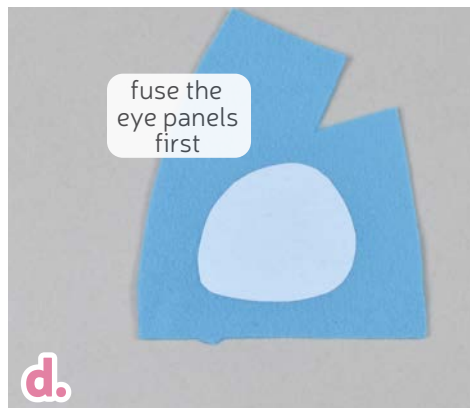
**BEFORE YOU BEGIN:**

- Briefly read the project instructions so you know what to expect.
- If desired, mark the cut fabric pieces with the markings and symbols from the pattern. Or wait until the applicable step before transferring.
- Note that a ¼" seam allowance is used throughout the project, which is included in the pattern templates.



**1. PREPARE THE FACE APPLIQUE**

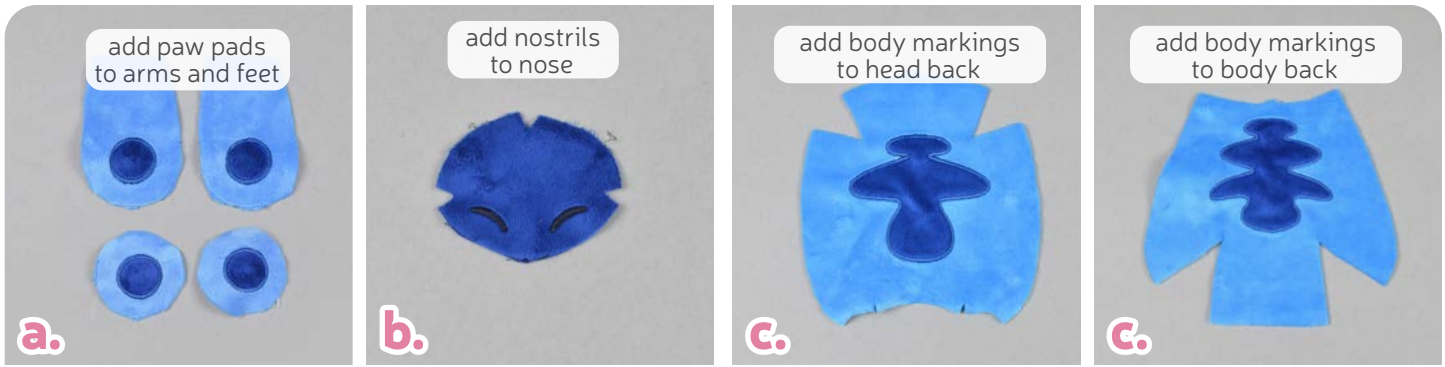
- Grab your fusible web and trace all the applique pieces you want onto the smooth (paper) side. You should have at least 2 **eye panels**, 2 **eyes**, 2 **nostrils**, and 2 **eye shines**. You'll also need other body markings like **paw pads** and **head back** or **body back markings** depending on your character.
- Fuse the bumpy (adhesive) side onto the wrong side of your applique fabric. The **eye panels** should be fused your light accent color, the **eyes** on black, the **eye shines** on white, and the **body markings** onto the dark accent color. Cut out the face applique and grab your **HEAD FRONT (A)** piece.



- Set your paper pattern on top of the fabric piece (right sides up). Align the **eye panel** piece on top where the **placement markings** are. Then carefully slide the paper pattern away while holding the applique piece in place.
- Fuse the **eye panel** in place with your iron. Use a press cloth if you're using a polyester or fuzzy fabric like minky. A scrap piece of cotton works as a press cloth, and will help prevent the fabric from melting.
- Next, move onto the smaller pieces: the **eyes** and **eye shines**. Fuse them the same way as you did the **eye panels**, using the paper pattern and photos as a guide.

**sew desu ne?**

| [WWW.CHOLYKNIGHT.COM](http://WWW.CHOLYKNIGHT.COM) |

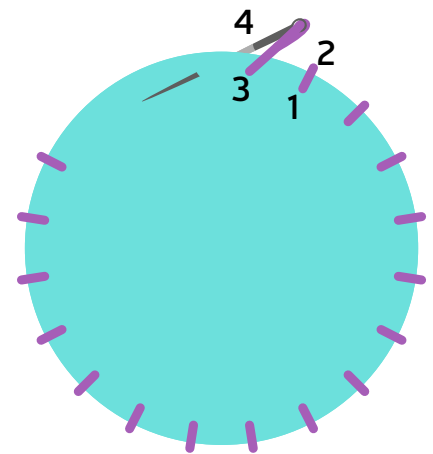


## 2. APPLIQUE THE OTHER BODY PIECES

- a. Take this time to also applique your other body pieces using the same method. The **ARMS** (G) and **FEET** (J) need *paw pads*.
- b. Meanwhile the **NOSE** (M) needs *nostrils*.
- c. If you're making Stitch, both the **HEAD BACK** (K) and **BODY BACK** (L) will need *markings*. For Angel, she has a *chest marking* and *body back marking*.

If you used heavy duty fusible web, you can keep the pieces fused without sewing, or you can sew them in place a number of ways. I've used a zigzag stitch here.

→ Refer to the next step for some other applique options.

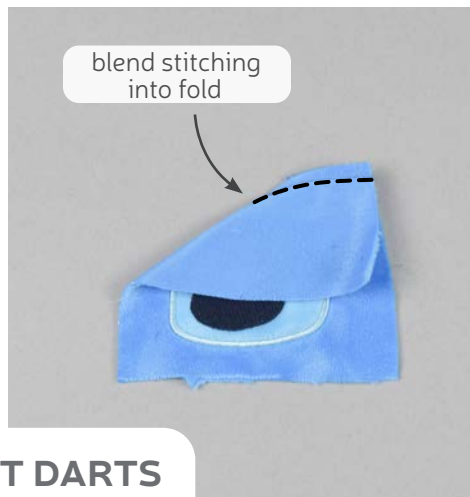


### 2a. OTHER APPLIQUE OPTIONS

- a. Other good options for applique include a straight stitch, which involves sewing around the edge of the applique pieces with a straight stitch using matching thread -- about 1/8" in from the edge.
- b. You can also applique by hand; I prefer a whipstitch. Thread a hand-sewing needle with some matching thread and knot it. Bring the thread up from the back of the project; about 1/8" in from the edge of the applique shape. Bring it down perpendicular from the curve, just outside of the applique shape. This completes one stitch.
- c. For the next stitch, bring the needle back up about 1/8" away from the previous stitch and 1/8" in from the edge just as in the first stitch. Once again, bring it down just outside the applique shape. Continue this way until you've sewn around the shape.

sew desu ne?

| WWW.CHOLYKNIGHT.COM |

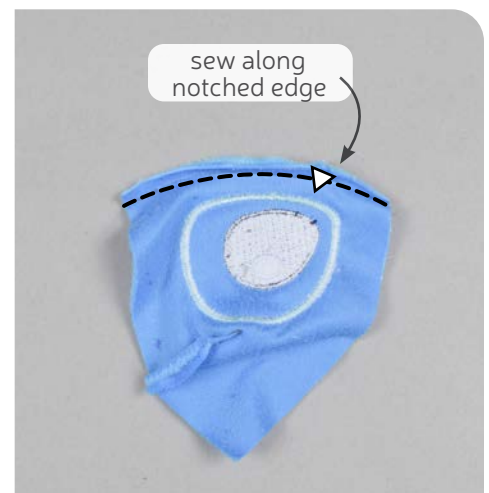
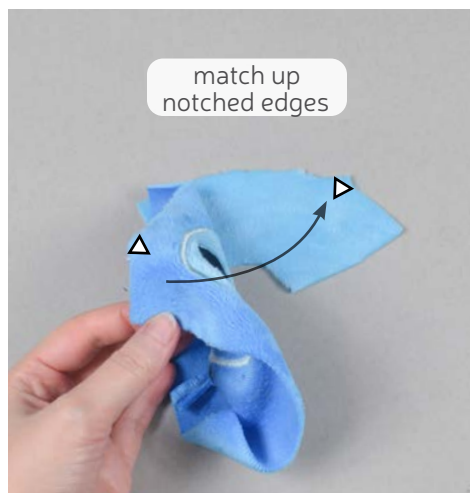


### 3. SEW THE HEAD FRONT DARTS

- Grab your **HEAD FRONT** piece (A). You'll notice the large wedge shape near the top corner of the piece. This is a **dart**. To sew it, begin by folding the fabric with right sides facing along the corner of the **dart**. This should match up the slanted lines.
- Sew the **dart** by starting at the opening and working toward the point. Try to blend your stitching into the fold of the fabric. This will create a rounder finish for your plush.
- Repeat with your remaining head front piece for two pieces total.

#### DARTS:

A wedge-shaped gap found in a pattern. When sewn in fabric, it creates a tuck in the fabric and develops a 3D shape. The diagonal sides of the wedge are the **LEGS**; these are matched up and sewn to the **POINT** of the dart.



### 4. ATTACH THE CHIN

- Grab your **CHIN** pieces (B). These pieces will join to the bottom of your **HEAD FRONT** pieces (A). They both have **notch markings** to help with alignment.
- Align the head front over the chin so right sides are facing and the **notched edges** match up. You may need to bend and stretch the fabric a little to make it fit.
- Sew the head front to the chin along the **notched edge**.

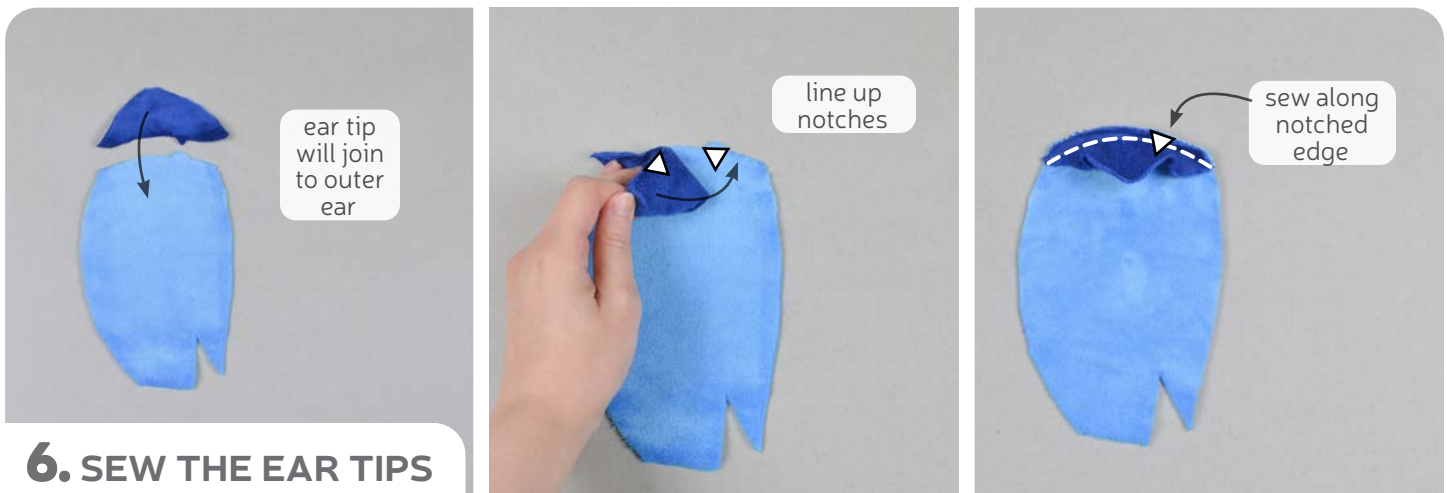
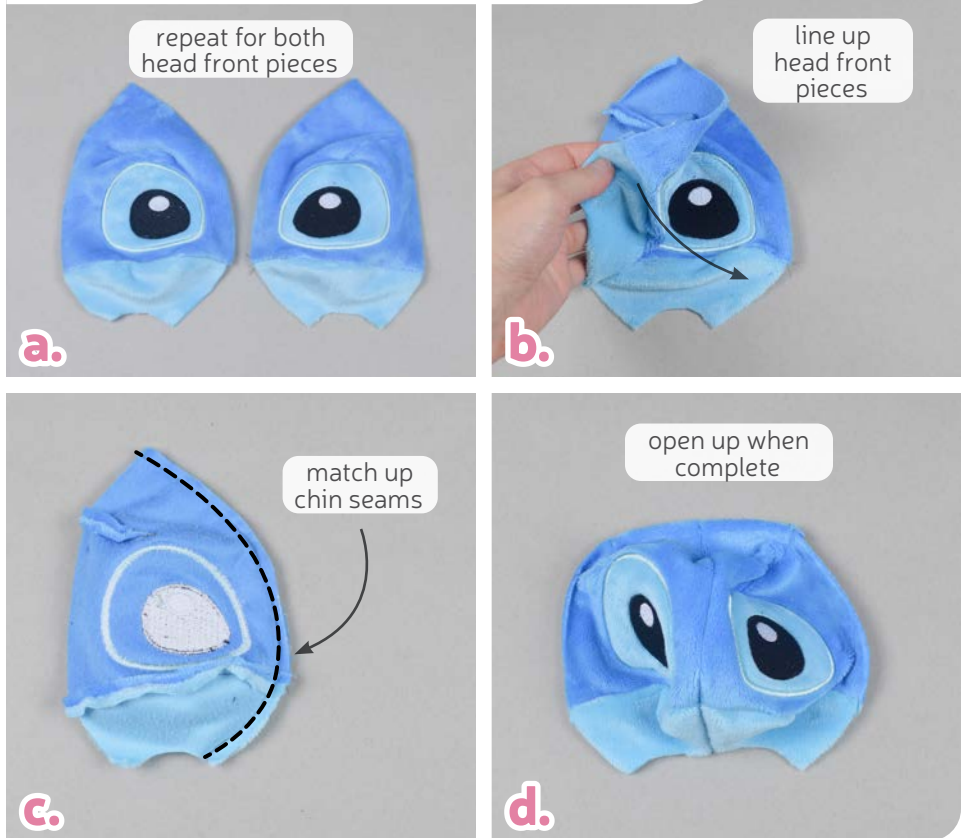
sew desu ne?

| WWW.CHOLYKNIGHT.COM |



- a. Repeat step 4 with your other **CHIN** piece (B) so you have two sides to your head front.
- b. Align both of your head front pieces so right sides are facing and the raw edges match up.
- c. Sew the head front pieces together along the edge without the **darts**. Try to match up your **chin seams** for the best result.
- d. Open up the head front pieces when complete.

## 5. ATTACH THE HEAD FRONT PIECES



- a. Grab your **OUTER EAR** (C) and **EAR TIP** pieces (D). These pieces will join together next. Just like the **CHIN** from before, they also have **notch markings** to help with alignment.
- b. Align the ear tip over the top of the ear, matching up the **notches**. Due to the curve, you may need to bend and stretch the ear tip to make it fit.
- c. Sew the ear tip to the ear along the **notched edge**.

sew desu ne?

| [WWW.CHOLYKNIGHT.COM](http://WWW.CHOLYKNIGHT.COM) |



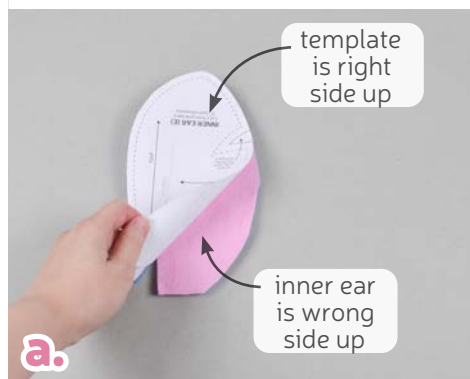
- a. Open up the ear pieces when complete. Repeat step 6 with your remaining ear pieces so you have two total.
- b. Grab your **INNER EAR** pieces (E). Align them over the outer ear so the right sides are facing and the raw edges match up.

→ **FOR STITCH:** continue with step 8 below for the ear notches.  
**FOR ANGEL:** skip ahead to step 9.

## 7. ALIGN THE INNER EARS

- a. Before we sew the ears, we're going to cut out the notches in Stitch's ears. Begin by grabbing your **INNER EAR** template (E). Align it over one ear so the wrong side of the inner ear fabric is facing up and the right side of the template is also facing up.
- b. Cut out the upper ear notch through both the template and ear fabrics. This will be Stitch's right ear on the finished plush.
- c. Grab your other ear and align the inner ear template over it so the edges match up. The wrong side of the template should be facing up.
- d. Cut through the lower notch through both the template and ear fabrics. This will be Stitch's left ear on the finished plush.

## 8. CUT THE NOTCHES FOR STITCH



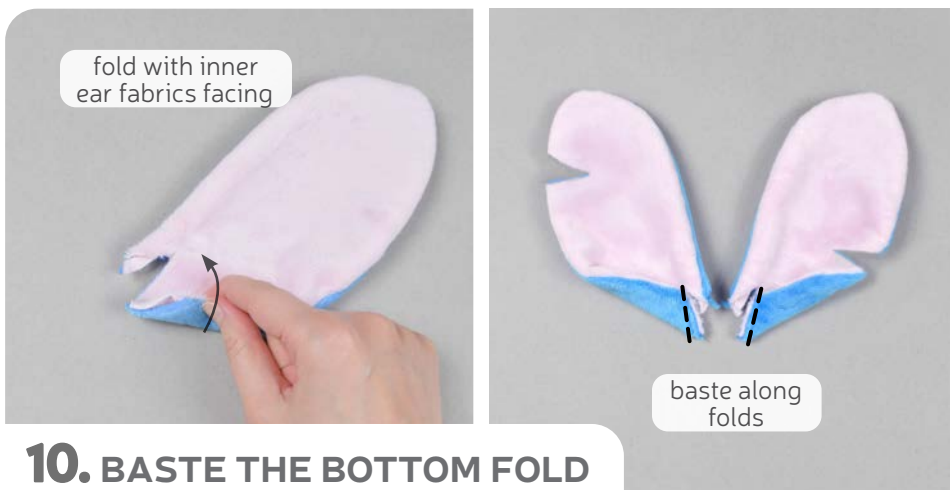
sew desu ne?

| WWW.CHOLYKNIGHT.COM |



## 9. SEW THE EARS

- Sew the ears together around the long curved edge. If you have ear notches, be sure to pivot around them. Leave the straight edges with the odd corners open. This area is marked on the paper pattern for easy identification. This will be where the ear is turned right side out later.
- Clip the seam allowances at the notches of the ear. Try to cut as close as possible to the inner corners without cutting your stitching.
- Turn the **EARS** right side out through the openings. Define the points with a chopstick or similar blunt tool.



## 10. BASTE THE BOTTOM FOLD

- The ears have two folds along the opening to help create sort of a 3D shape. The first fold is along the outer corner of the ear. This is the one making a right angle, but you can see **fold guide #1** on the paper pattern for easy identification. Fold the ear along the first line with the inner ear fabrics facing.
- Baste the ear fabrics together along the raw edge of the fabric to hold the fold in place.

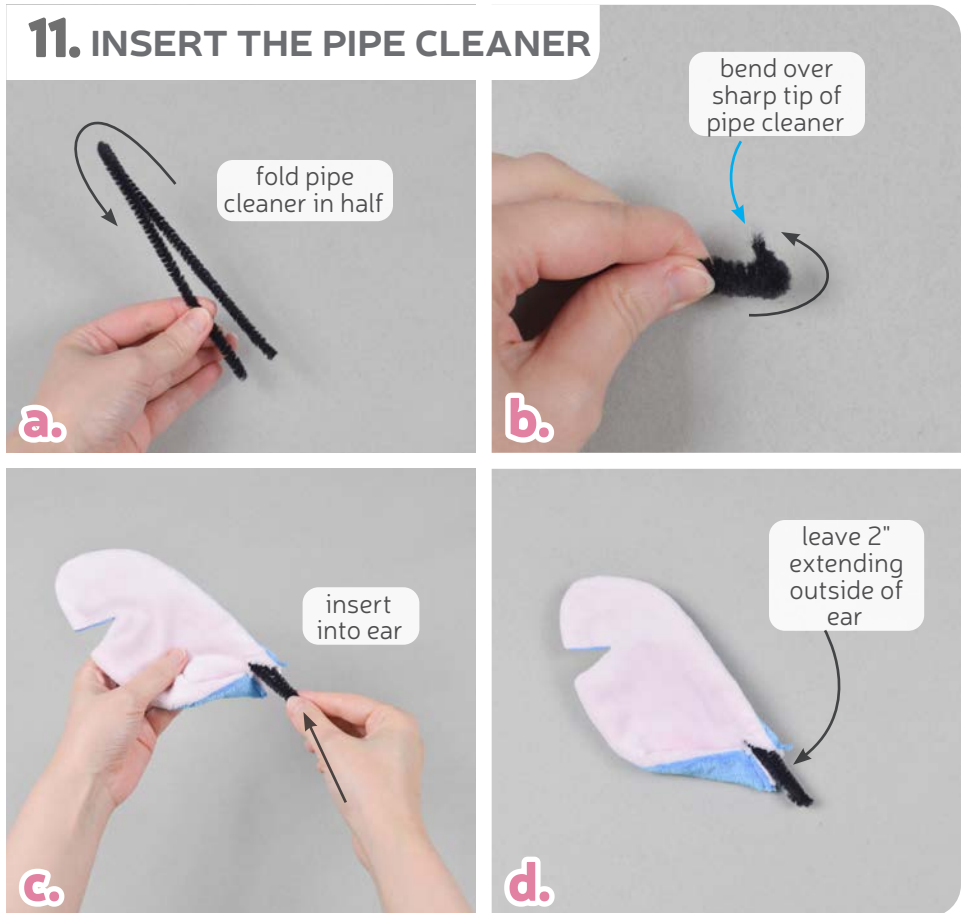
### BASTING:

A form of temporary sewing meant to hold pieces in place. A long stitch length is often used for this reason. The finished result is not meant to be seen and sometimes is even removed later (depending on your project).

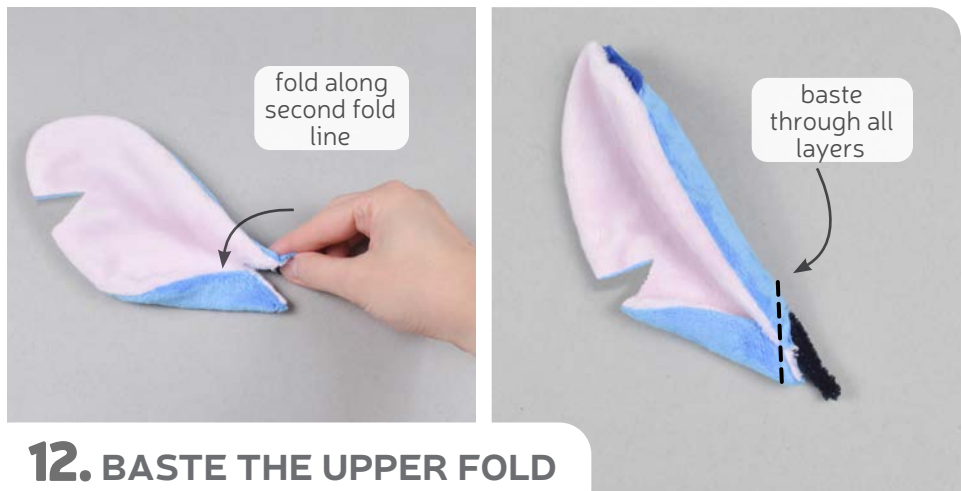
sew desu ne?

| WWW.CHOLYKNIGHT.COM |

- a. If you'd like to use a pipe cleaner in your plush's ear to help it stand up, grab yours now. Fold the pipe cleaner in half so the ends match up.
- b. Fold over the sharp ends by about 1/2" or so. This will help prevent the ends of the pipe cleaner from poking anyone.
- c. Insert the pipe cleaner into the opening of the ear with the folded end going first.
- d. Stop when there is about 2" of the pipe cleaner extending out of the ear opening. We're going to use this extra to secure the wire to the head. This will keep it stable and help hold up the ear.



- a. With the pipe cleaner inside, you can now make the second ear fold. Fold the ear along the inner corner, following the **fold guide #2** on the paper pattern. Make sure the inner ear fabrics are facing and the pipe cleaner is secured inside.
- b. Line up the raw edges of the ear after it has been folded. Then baste along the open edge of the ear once again.



Note that this area is very bulky, especially if you have the pipe cleaner. **SEW VERY SLOWLY** and use only the **HAND WHEEL OVER THE WIRE** in the pipe cleaner. This will ensure the needle doesn't hit the wire straight on and break the needle.

Repeat steps 11-12 with your other ear so you have two ears total.

sew desu ne?

| WWW.CHOLYKNIGHT.COM |



### 13. BASTE THE EARS

- If you haven't already, note the **ear placement lines** on the paper pattern for the **HEAD FRONT (A)**. Transfer them over to the right side of the fabric. Grab one of your ears and align the raw edge within these **placement lines**. Repeat on the other side. The inner ear fabric should be facing up, and the ear tips should also be pointing up.
- Now flip the ear toward the inside of the face so the inner ear fabric is facing down. Baste the edge of the ear to the side of the head near the raw edge. Once again, **SEW VERY SLOWLY AND CAREFULLY** over these bulky layers. And use only the hand wheel of your sewing machine when going over the wire in the pipe cleaner.
- This completes the front of the head! Set it aside for a moment while we make the front of the body.



### 14. SEW THE BELLY DARTS

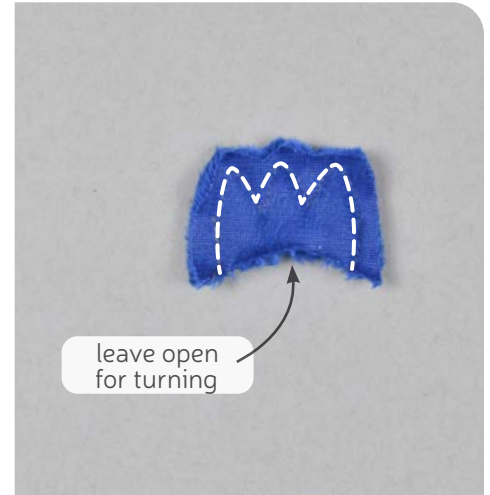
- Grab your **BELLY** piece (F). Just like the **HEAD FRONT (A)**, this piece also has **darts**. This time they're along the bottom. Sew them similar to the previous **darts**, starting by folding the fabric along the point of the **dart** with the right sides of the fabric facing each other.
- Sew from the opening of the **dart** into the fold of the fabric.
- Repeat for both **darts** along the bottom of the belly piece.

sew desu ne?

| [WWW.CHOLYKNIGHT.COM](http://WWW.CHOLYKNIGHT.COM) |



## 15. SEW THE CLAWS



- Grab your **CLAW** pieces (H). Take two of them and align them with right sides facing and raw edges matching up.
- The seams on the claws are a little detailed, so for extra help you may want to transfer the seam line from your paper pattern onto the fabric. Start by trimming away the seam allowance from the paper, then use it as a tracing guide to trace around the claws onto the wrong side of the fabrics you've stacked.
- Sew along the traced line of the claws. Leave the bottom open for turning the claws right side out later.

- Trim the excess seam allowance around the corners of the claws. This will reduce bulk and increase flexibility when the pieces are turned.
- Turn the claws right side out through the opening you left. Use a chopstick or similar turning tool to define each claw. Repeat steps 15-16 for as many claws as you need. For a disguised **STITCH** or **ANGEL**, you'll need 4 claws (for 2 arms and 2 legs). For an alien **STITCH**, you'll need 6 claws (for 4 arms and 2 legs).



## 16. TRIM & TURN THE CLAWS

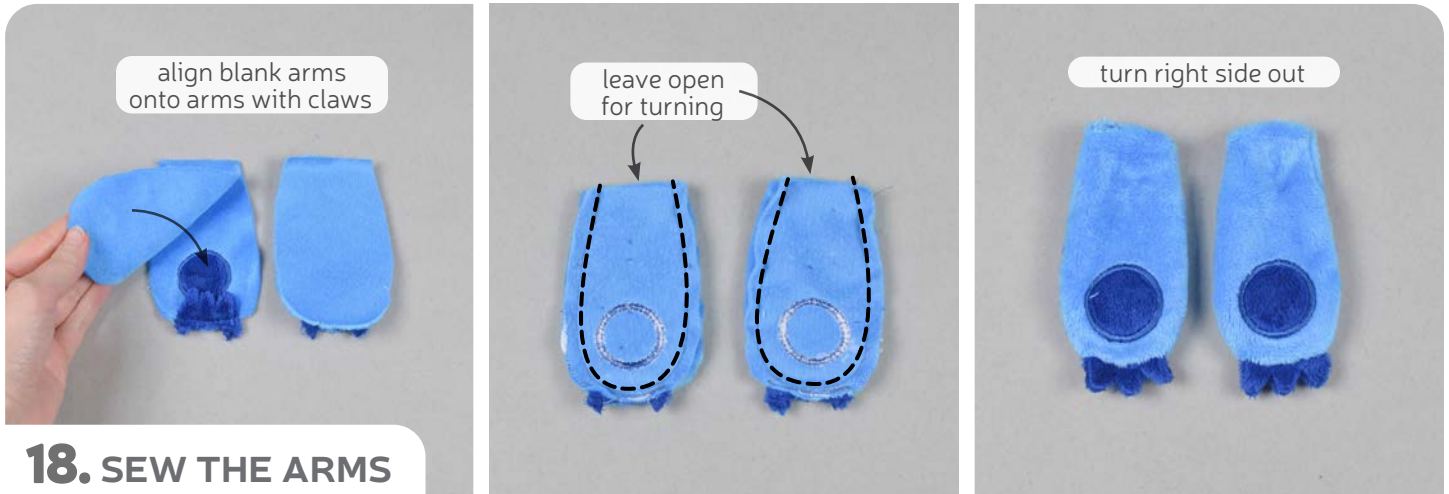
sew desu ne?

| [WWW.CHOLYKNIGHT.COM](http://WWW.CHOLYKNIGHT.COM) |



## 17. BASTE THE ARM CLAWS

- Grab your **ARM** pieces (G). Take all of the ones that have the **paw pad** applique.
- If you haven't already, locate the **claw placement lines** found on the paper pattern for the arms. Transfer these lines over to the right side of the fabric. Align the claws within these **placement lines** so the raw edges match up and the claws are pointing toward the **paw pad**.
- Baste the edge of the claw to the arm within the seam allowance to hold them in place for the next step.



## 18. SEW THE ARMS

- Grab your blank **ARM** pieces (G). Take one blank arm and align it over an appliqued one so right sides are facing and the **CLAWS** are sandwiched inside.
- Sew around the rounded edge of the arm, but leave the straight edge open for turning the arm right side out later.
- Turn the arm right side out through the opening. Repeat for as many arms as you need; 2 for disguised **STITCH** or **ANGEL**, and 4 for an alien **STITCH**.

sew desu ne?

| [WWW.CHOLYKNIGHT.COM](http://WWW.CHOLYKNIGHT.COM) |

- a. Stuff each **ARM** lightly with stuffing. Just enough so it takes shape and there are no large wrinkles in the fabric. Leave it empty near the opening since we'll be attaching it to the belly next.
- b. Grab your **BELLY** piece from before (F). If you haven't already, note the **arm placement lines** from the paper pattern. Transfer them over to the right side of the fabric. Align the arm within these lines so the raw edges match up. Flip them inward so the paw pads are facing down.
- c. Baste the edge of the arm to the belly within the seam allowance.
- d. For an alien **STITCH**, you'll have two arms on each side, one right below the other.



## 20. SEW THE LEGS

- a. Grab your **LEG** pieces (I). Repeat step 19 with your remaining **CLAWS** (H) and your leg pieces. Each leg should have one set of claws basted to it.
- b. Grab one leg and fold it in half with right sides facing and the straight edges matching up.
- c. Sew along the straight edge of the leg so it makes a tube. Repeat with your other leg for 2 total.

sew desu ne?

| [WWW.CHOLYKNIGHT.COM](http://WWW.CHOLYKNIGHT.COM) |

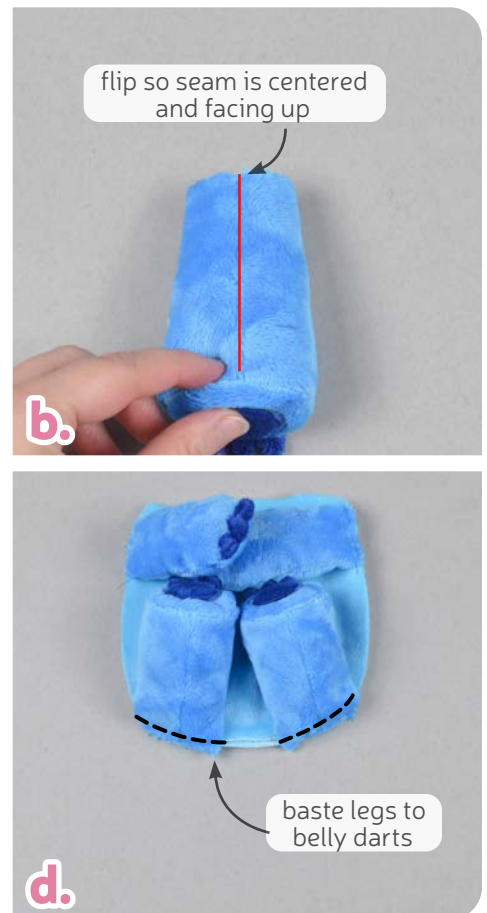




## 21. SEW THE FEET

- Grab your **FEET** pieces (J). Open up the end of the leg with the **CLAW** attached (H). Align this end of the leg around the foot so right sides are facing and the edges match up. You may need to stretch the fabric a little to make it fit.
- Sew the leg to the foot around the circle. Repeat for both legs for 2 total.
- Turn the legs right side out through the opening at the other end of the leg.

- Stuff the **LEGS** lightly with stuffing; just enough so they take shape and there are no large wrinkles in the fabric. Keep it empty near the top since we'll be attaching it to the **BELLY** next.
- Flatten the open edge of the leg so the seam (from step 20) is in the center and facing up. If you're a beginner you may want to baste it closed.
- Grab your **BELLY** from before and align one of your legs over one of the bottom **darts**. The seam should be facing up (and claws facing down).
- Baste both legs to the belly centered on the **darts**.



## sew desu ne?

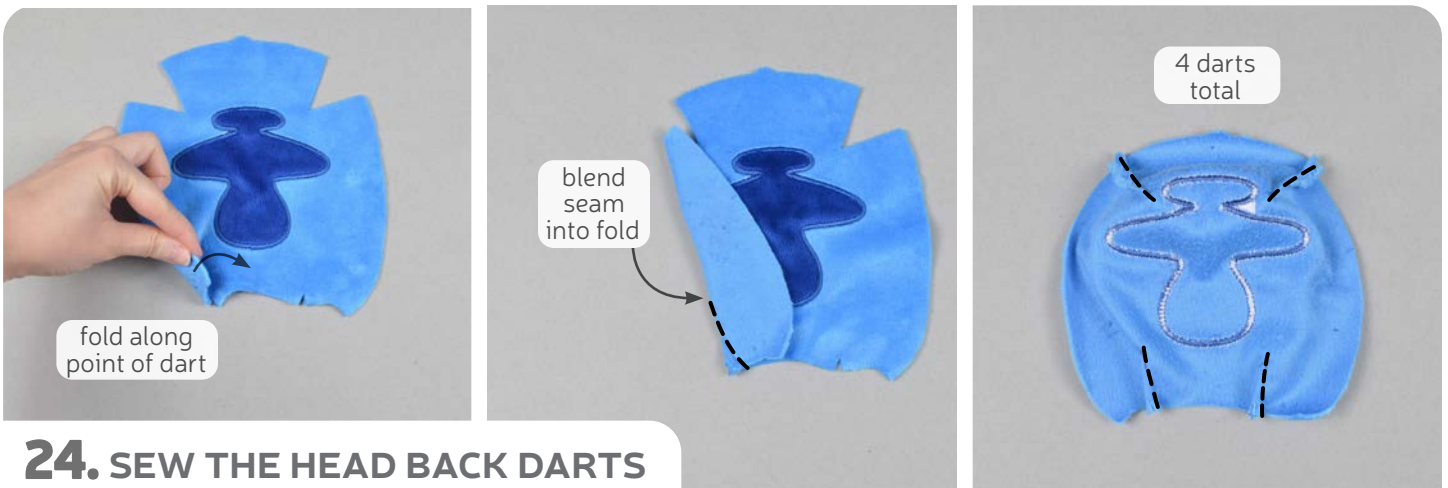
| [WWW.CHOLYKNIGHT.COM](http://WWW.CHOLYKNIGHT.COM) |



## 23. SEW THE NECK (FOR THE BODY FRONT)

- Grab your head front from before as well as your body front so far. These pieces will be joined along the **neck edge**. The body has a **center notch marking** that will help with alignment.
- Flip your head front piece over so now it's facing the belly with right sides together. Match up the head to the belly at the neck seam so the **center notch** is matching the **center seam** (from step 5). Pin the fabrics together.
- Sew the head to the belly along the neck edge.

→ *This completes the front of the plush! Set it aside for a bit while we make the back.*



## 24. SEW THE HEAD BACK DARTS

- Grab your **HEAD BACK** piece (K). This piece has several **darts** similar to the **HEAD FRONT** (A) and **BELLY** (F). We're going to sew them the same way. Start by folding the fabric along the point of the **dart**. In the first photo it's one of the smaller lower darts.
- Sew from the opening of the **dart** into the fold of the fabric.
- Repeat with the remaining **darts** around the head back. There should be two smaller **darts** at the neck and two larger **darts** along the top.

sew desu ne?

| [WWW.CHOLYKNIGHT.COM](http://WWW.CHOLYKNIGHT.COM) |



## 25. SEW THE BODY BACK DARTS

- Grab your **BODY BACK** piece (L). It has several **darts** along the bottom as well like previous pieces and we're going to sew them the same way. Start by folding the fabric along the point of the **dart**.
- Sew from the opening of the **dart** into the fold of the fabric.
- Repeat for both **darts** along the bottom of the body piece.



## 26. SEW THE NECK (FOR THE BODY BACK)

- Grab your **HEAD BACK** from before as well as your **BODY BACK**. These pieces will be joined along the **neck edge**.
- Flip your head back piece over so now it's facing the body back with right sides together. Match up the head to the belly at the **neck seam**. Pin the fabrics together.
- If you haven't already, note the **opening for turning marking** along the neck edge of the body back piece. Sew the head to the back along the neck edge, but leave an **opening for turning** at the center.
- Open up the pieces when complete.

sew desu ne?

| WWW.CHOLYKNIGHT.COM |

- a.** Grab both your body front and body back pieces. We're going to join the front to the back. But to make it easier, we'll do the head and body separately. Start by aligning the **HEAD FRONT** to the **HEAD BACK** (K) with right sides facing. Make sure the **EARS** are tucked inside the center of the head. The **center front seam** should match up with the **center top notch** on the head back. The **darts** at the corners should also match. Finally match up the **neck seams**. Pin the fabrics together.



## 27. SEW THE HEAD FRONT TO THE BACK

- b.** Sew the head front to the back all around the head. Be sure to **sew very slowly and carefully over the ears**, because there's a lot of bulk there. Use only the hand wheel when going over the wire in the pipe cleaners (if your plush has them).



## 28. SEW THE BELLY TO THE BACK

- a.** To sew the body, start by making sure the **ARMS** and **LEGS** are tucked inside the body, then line up the **BELLY** with the **BODY BACK**. The **darts** at the bottom corners should line up. Pin the fabrics together.
- b.** Sew the belly to the back all around the body area. This can be difficult because the area is crowded, so it helps to focus on just a few inches at a time. Hold one limb firmly, stitch over it, then reposition and hold the next limb. When finished, this should complete the entire outer edge of the body. Check to be sure you've stitched all the way around the head and body.

sew desu ne?

| [WWW.CHOLYKNIGHT.COM](http://WWW.CHOLYKNIGHT.COM) |



## 29. SECURE THE EAR PIPE CLEANERS

- If your **EARS** have pipe cleaners for extra support, take this time to secure them to the side of the head so your ears have a stable foundation.  
**Younger sewers should have adult supervision for this.** Grab your hot glue and run a line of glue along the seam allowance on the side of the head.
- Carefully press the pipe cleaner into the glue to hold it securely. Another alternative would be to whip stitch the pipe cleaner to the seam allowance to hold it securely. Repeat for both sides of the head.
- Turn the plush right side out through the opening in the back of the neck.

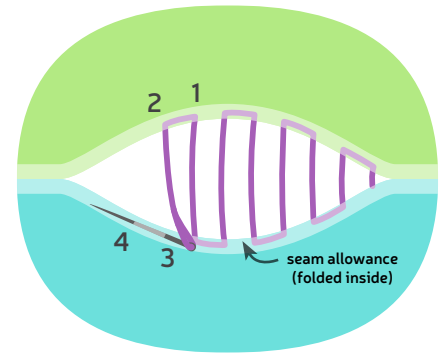


## 30. STUFF THE BODY

- Begin stuffing your plush, starting with the body. Fill it until it's firm and there are no wrinkles in the fabric. This is especially important around the seams and darts.
- Move on to stuffing the head. Be sure to get plenty of stuffing in the nose area so it fills out and there are no wrinkles at the seams.
- Finally fill up the last of the head until the whole body is firm.

sew desu ne?

| [WWW.CHOLYKNIGHT.COM](http://WWW.CHOLYKNIGHT.COM) |



### 31. LADDER STITCH THE OPENING

- a. Once the plush is stuffed, make sure the seam allowances in the opening are tucked inside and prepare to ladder stitch it closed. Thread a hand-sewing needle and knot it at the end. Insert the needle from the inside of the opening and out of the plush near one edge of the opening. This will leave the knot inside the plush.
- b. Continue from here doing a ladder stitch. Take a  $\frac{1}{8}$ " stitch into the fold of one side of the opening, then go across and take another. Keep going down the opening until you reach the end.



### 32. SECURE THE EARS

- a. When you're finished, stitch a knot into the end of the neck seam. Then insert the needle near the finished knot and out of the plush about 1-2" away.
- b. Pull the thread through and hold it taut while snipping the thread. The excess thread should sink back inside the plush -- all hidden!
- c. If you didn't use pipe cleaners in your ears, or just want some extra security, you may want to ladder stitch part of the **EAR** to the head. Take about 1" of the ear from above the corner where it's attached to the head. Align it so it's flush with the head. Then ladder stitch that part of the ear to the head from both sides. This will help support it a little further.



### 33. SEW THE NOSE DARTS

- Grab your **NOSE** piece (M). It has several **darts** all around the shape, just like previous pieces from before. We'll be sewing them the same way, starting with folding the fabric along the point of one of the **darts**.
- Sew from the opening of the **dart** into the fold of the fabric.
- Repeat with the remaining **darts** around the nose. There should be 3 total, one on each side, and the last along the center top.



### 34. SEW THE NOSE

- Grab your **NOSE BASE** piece (N). Align the **NOSE** (M) from before over the nose base with right sides facing and raw edges matching up. The **top center dart** should align with the **center notch**. The corner along the bottom of both pieces should also match up.
- Sew the nose pieces together all around the shape. Be sure to pivot at the corner at the bottom.
- Trim the excess seam allowance at the corner of the nose. This will help reduce bulk in that area.

sew desu ne?

| [WWW.CHOLYKNIGHT.COM](http://WWW.CHOLYKNIGHT.COM) |



### 35. TURN & STUFF THE NOSE

- To turn the **NOSE** right side out, cut a small slit through the **BASE** fabric only (N).
- Turn the nose right side out through the opening. Define the point at the center bottom to help create the nose shape.
- Stuff the nose semi-firmly with stuffing. Be sure there are no wrinkles near the darts and the point at the bottom is still sharp.

- Grab your plush so far. Align the cut side of the nose onto the face of your plush so the nostrils are pointing downward. It looks nice about  $\frac{3}{8}$ " up from the chin seam. This way the **head front seam** looks a little like a muzzle. Pin the base of the nose in place to hold it.

- Ladder stitch the nose to the face of your plush. For best results, sew around once using long basting stitches. Then check the nose to make sure it hasn't twisted or moved. Then once it's positioned perfectly, sew around the nose again with tinier, neater stitches to complete.

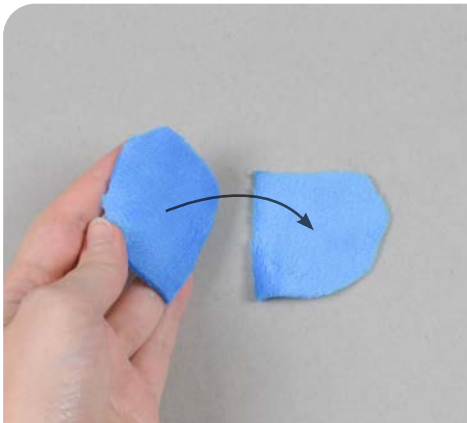


### 36. ATTACH THE NOSE

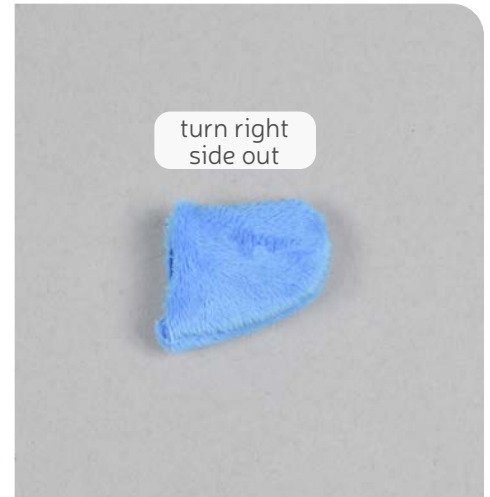
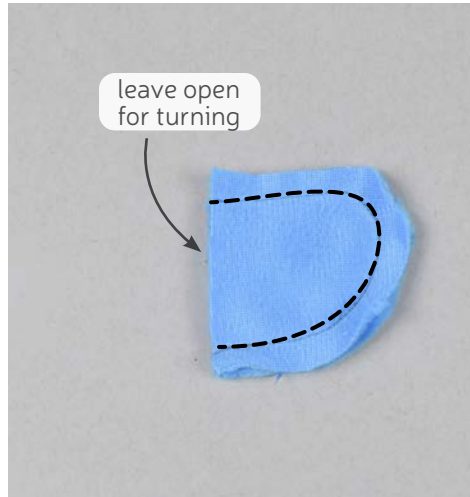
sew desu ne?

| [WWW.CHOLYKNIGHT.COM](http://WWW.CHOLYKNIGHT.COM) |





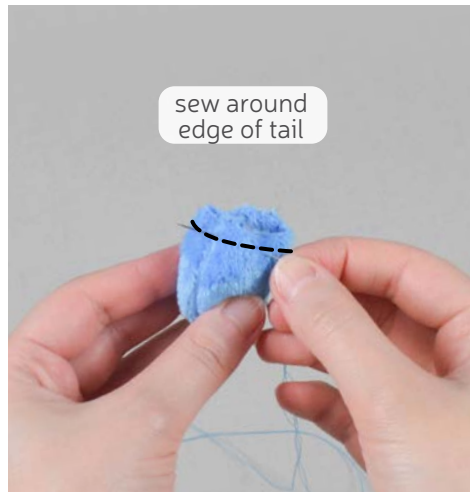
### 37. SEW THE TAIL



- Grab your **TAIL** pieces (O). Align them with right sides facing and raw edges matching up.
- Sew the tail pieces together around the curved edge. Leave the straight edge free for turning the tail right side out.
- Turn the tail right side out through the opening.



### 38. STUFF THE TAIL



- Stuff the **TAIL** lightly with stuffing, just enough to it takes shape.
- Grab a hand sewing needle and thread it. Sew a gathering stitch around the edge of the tail, about  $\frac{1}{4}$ " away from the edge.

#### GATHERING:

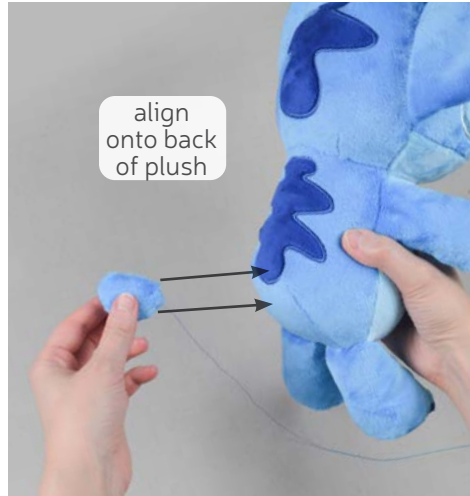
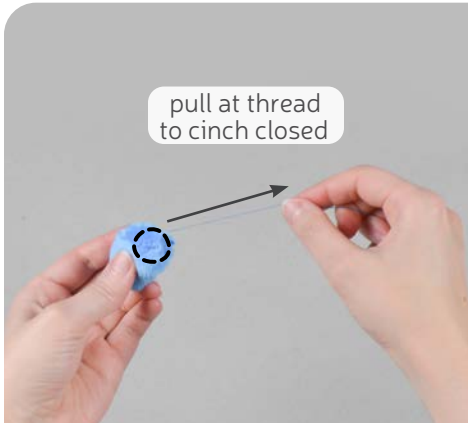
The process of shortening the length of a piece of fabric by sewing long stitches through it. When the thread is pulled, it forms small folds that ruffle the fabric.

#### GATHERING STITCH:

A long version of the running stitch, which is a stitch done by weaving the needle in and out of a length of fabric going along a line. The long stitches (about  $\frac{1}{4}$ "- $\frac{1}{2}$ " long) gather the fabric when pulled later.

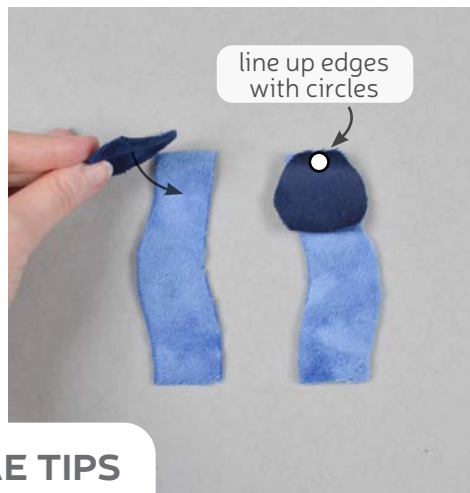
sew desu ne?

| [WWW.CHOLYKNIGHT.COM](http://WWW.CHOLYKNIGHT.COM) |



### 39. ATTACH THE TAIL

- Pull at the thread from your stitches and this should cinch up the **TAIL**. Sew a few knots into the center to hold the tail closed.
- Align the cinched end of the tail onto the back side of your plush. It's good to have it right beneath the **body back marking**. But it also helps to keep it level with the bottom of the plush. Doing so will help prop it up when it sits.
- Ladder stitch the tail to the back of the plush similar to the nose from back in step 36.
  - *If you're making a regular Stitch, you're all done! See the steps below for an alien Stitch, or for Angel.*

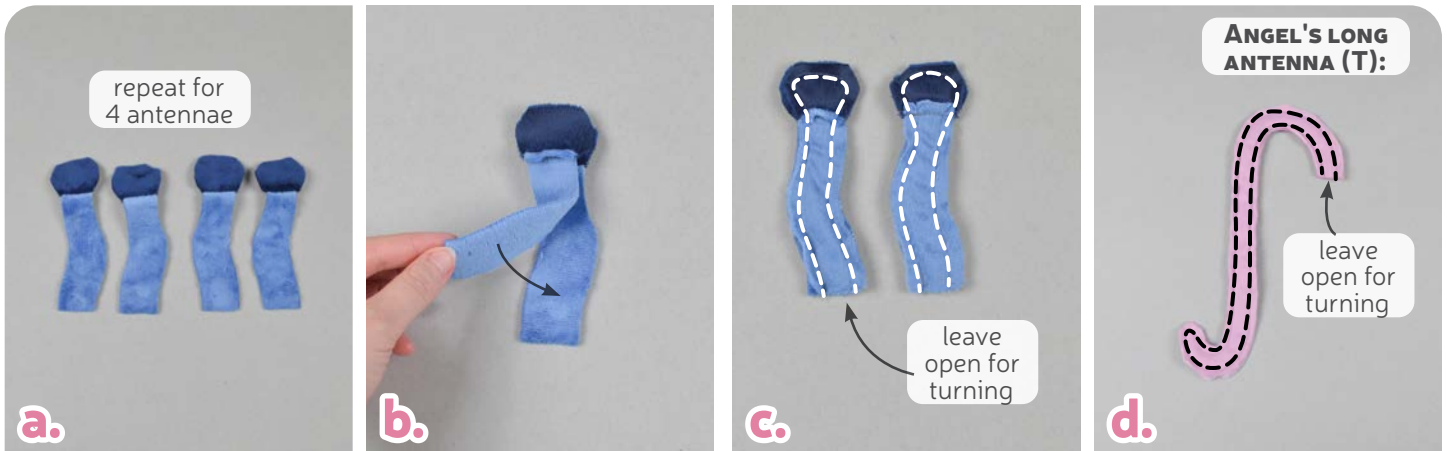


### 40. SEW THE ANTENNAE TIPS

- Grab your **ANTENNAE** pieces and the **TIPS** (P & Q). The tips will be attached to the top of the antennae next. These edges have **circle markings** for easy identification.
- Align the antennae tip with the antennae along the edges with the **circle markings**. Make sure right sides are facing and the raw edges match up.
- Sew the antennae tip to the antennae along the edge with the **circle marking**.

sew desu ne?

| WWW.CHOLYKNIGHT.COM |



## 41. SEW THE ANTENNAE

- Repeat step 40 with the remaining **ANTENNAE** and **ANTENNAE TIP** pieces (P & Q). You should have 4 total. Open them up when complete.
- Align one antenna with another so right sides are facing and the raw edges match up.
- Sew the antennae pieces together around the edge, but leave the straight edge free for turning the piece later.
- If you have **ANGEL'S ANTENNAE** (T), they should look something like photo D.

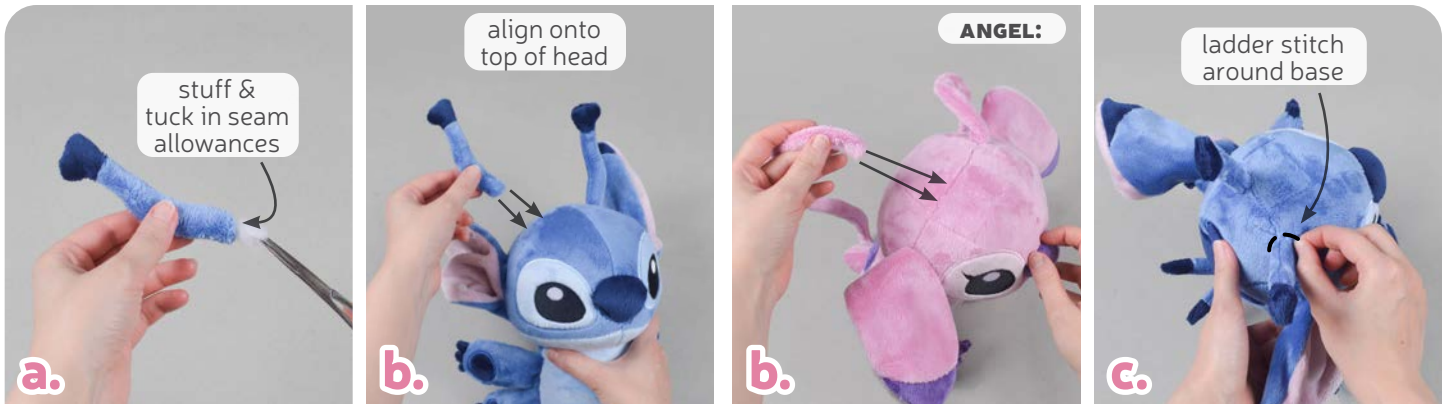


## 42. TURN THE ANTENNAE

- Trim the excess seam allowance around the tight corners and curves of the **ANTENNAE** pieces (P/Q or T). This will help reduce bulk so it turns more easily.
- Turn the antennae right side out. Because the pieces are so long and skinny, it can be tricky to turn them. Hemostats are very helpful for reaching in to grab the inside. Another good method is to push from the tip of the piece inward. Then work your way out of the opening of the piece.
- Repeat so you have two finished antennae.

sew desu ne?

| [WWW.CHOLYKNIGHT.COM](http://WWW.CHOLYKNIGHT.COM) |



## 43. ATTACH THE ANTENNAE

- FOR STITCH'S ANTENNAE (P/Q):** you'll want to stuff the **ANTENNAE** firmly. This will help them stick straight up. Also tuck in the seam allowance at the opening of the antennae so the opening of the piece has a folded edge.
- Align the antennae over the top of your plush's head. I prefer them centered on the top seam and about  $\frac{1}{2}$ " in from the corner darts.
- Ladder stitch the base of the antennae to the head of your plush. Repeat for both on each side of the head.

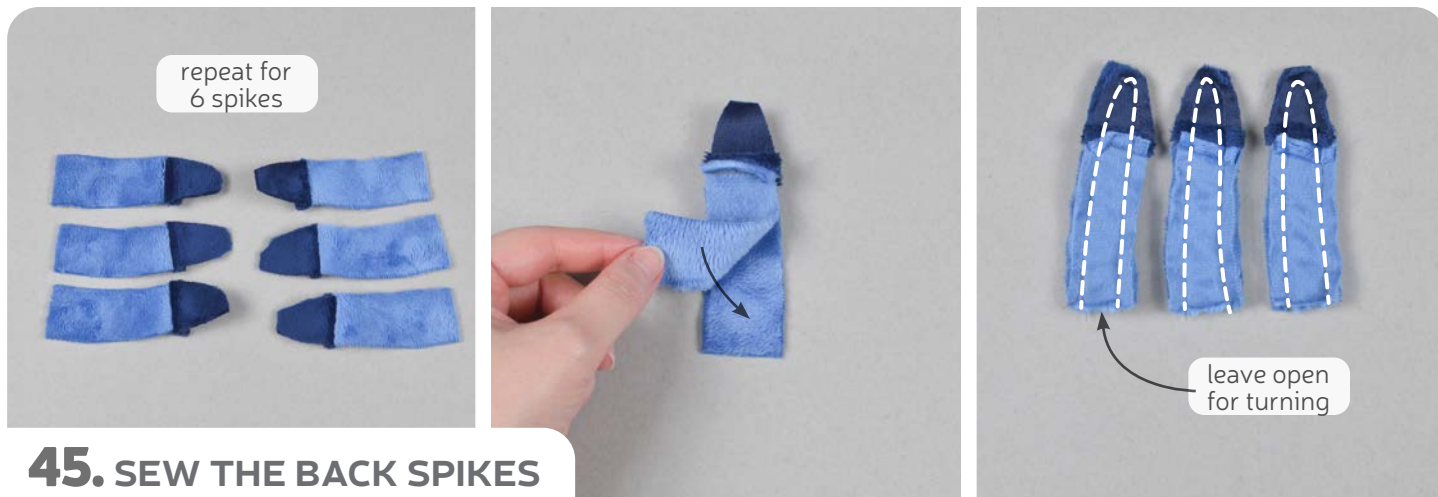


## 44. SEW THE BACK SPIKE TIPS

- For Stitch's back spikes, you'll need both the **BACK SPIKE (R)** and **BACK SPIKE TIP** pieces (S). This is so they have the contrast darker blue on the end of the spike. We'll be attaching these pieces next. Just like the antennae, they have a **circle marking** along the edge that we'll sew, for quick identification.
- Align the spike tip over the spike so the right sides of the fabric are facing. Match up the edges with the **circle marking**.
- Sew the spike tip to the spike along the edge with the **circle marking**.

sew desu ne?

| WWW.CHOLYKNIGHT.COM |



## 45. SEW THE BACK SPIKES

- Repeat step 44 five more times so you have six **SPIKES** total.
- Align two of the spikes together so right sides are facing and the raw edges match up.
- Sew the spikes around the curved edge, but leave the short straight edge at the end open for turning the piece later.



## 46. TURN THE BACK SPIKES

- Trim the excess seam allowance around the tip of the **SPIKE** to reduce bulk and make it easier to turn.
- Turn the spike right side out through the opening.
- Stuff the spike firmly with stuffing. This will help it keep its shape when it's attached to the body later. Tuck in the seam allowance at the opening of the spike so the opening has a folded edge.

sew desu ne?

| [WWW.CHOLYKNIGHT.COM](http://WWW.CHOLYKNIGHT.COM) |



- a. Take your three **BACK SPIKES** (R/S) and align them onto the back of your plush. They should be centered over the **body back marking**. Here they're spaced out about  $\frac{1}{2}$ " apart.
- b. Ladder stitch the spikes to the back by sewing around the base of the spike.

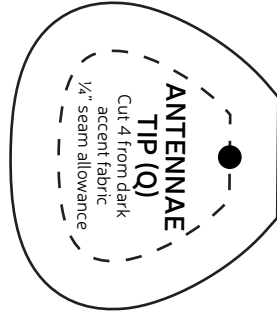
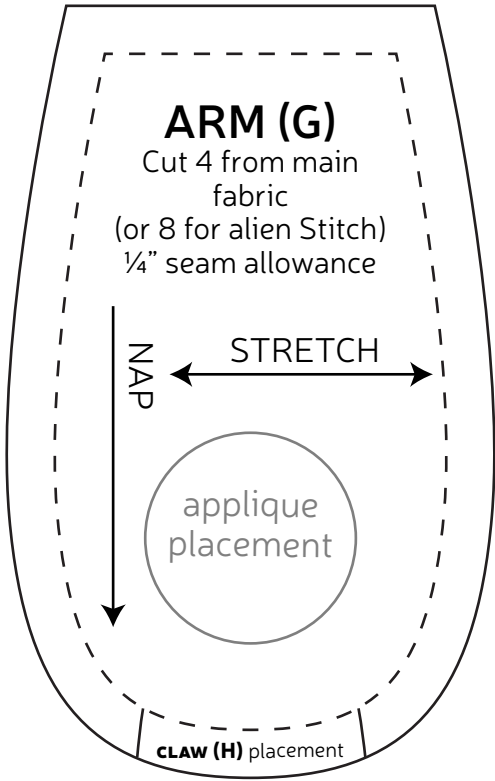
## 47. ATTACH THE BACK SPIKES



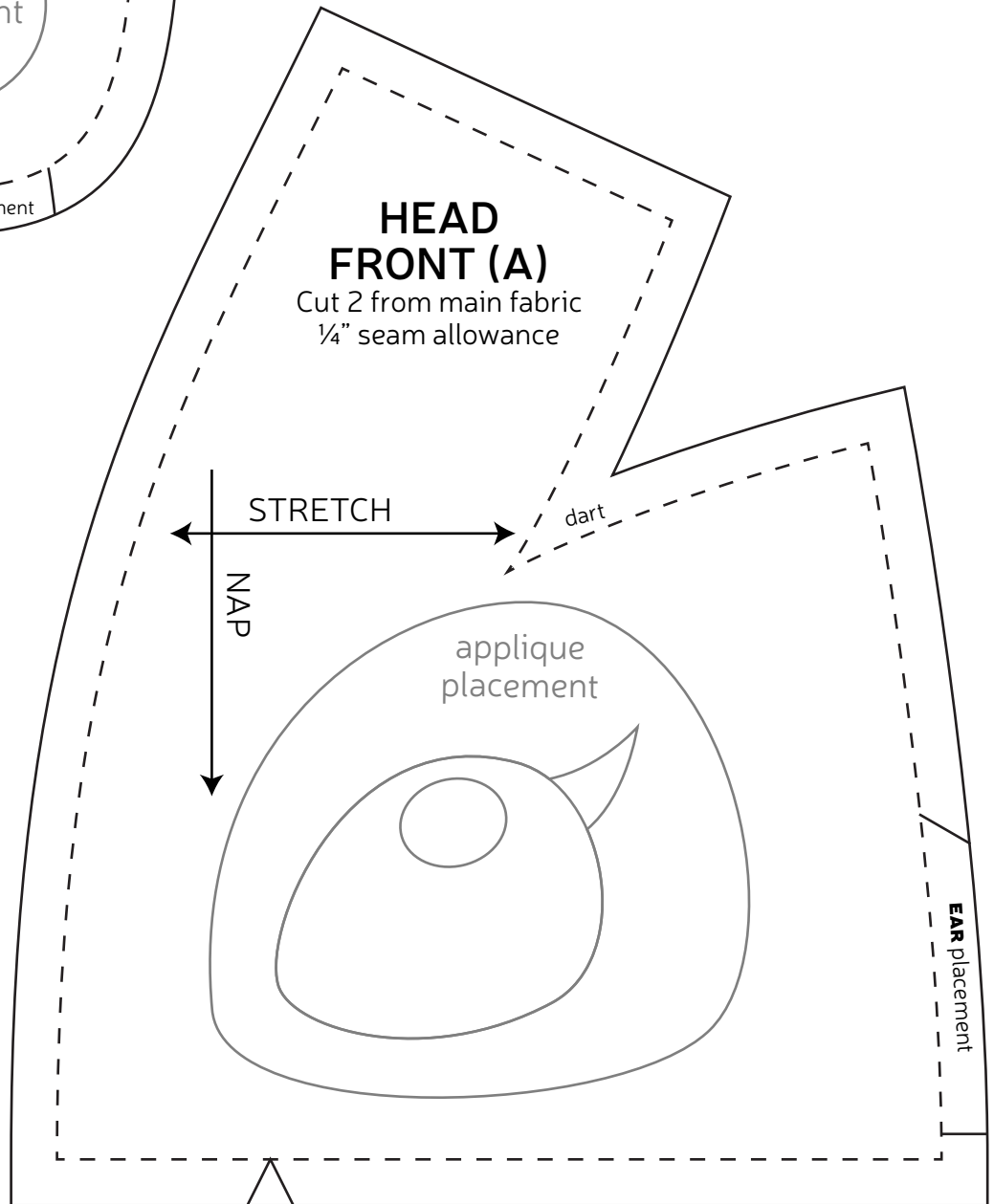
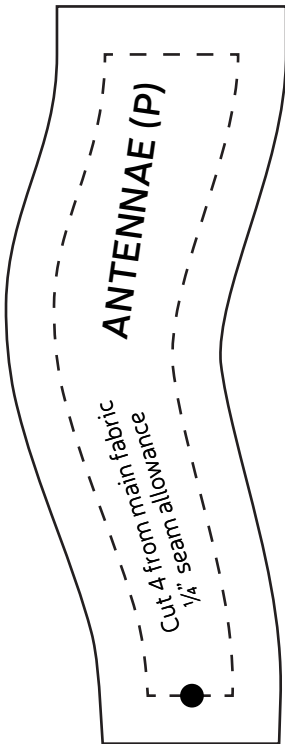
**CONGRATS!**  
This completes your plush! Now give it a big hug!

**sew desu ne?**

| [WWW.CHOLYKNIGHT.COM](http://WWW.CHOLYKNIGHT.COM) |

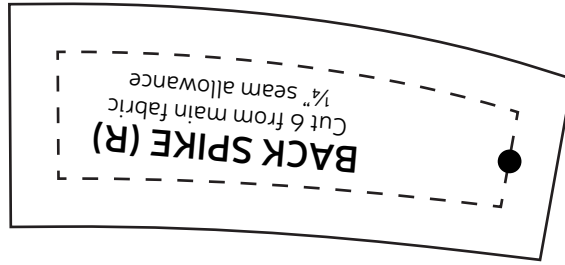
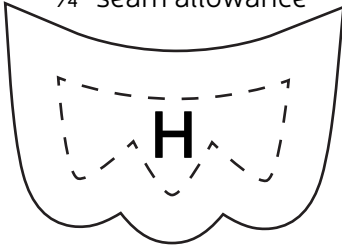


**TEST SQUARE**  
**2"**  
measure this square to be sure you've printed at the proper proportions



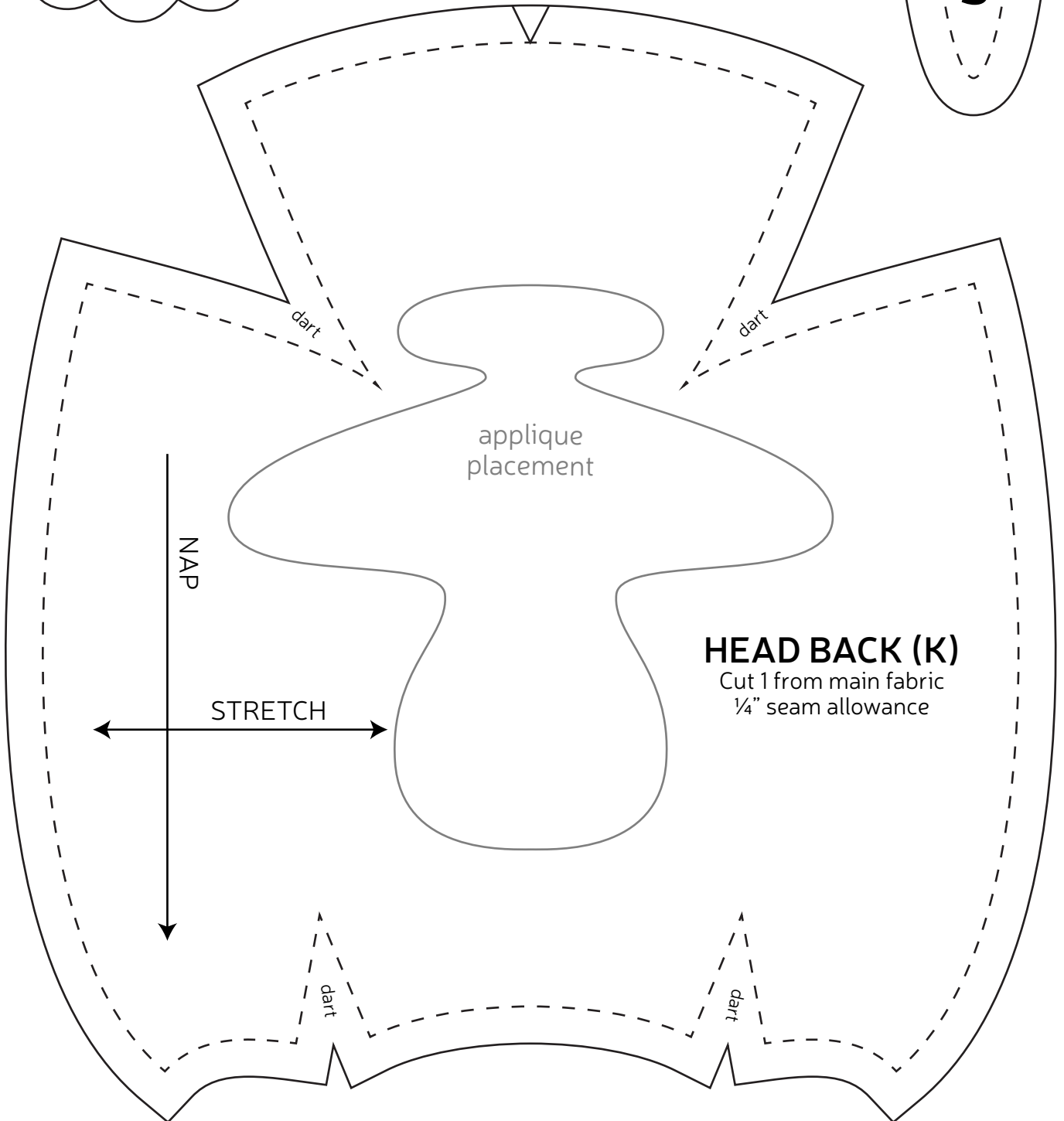
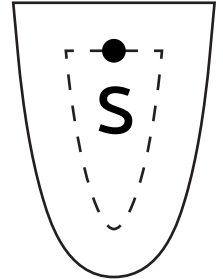
**CLAWS (H)**

Cut 8 from dark accent fabric (or 12 for alien Stitch) 1/4" seam allowance



**BACK SPIKE TIP (S)**

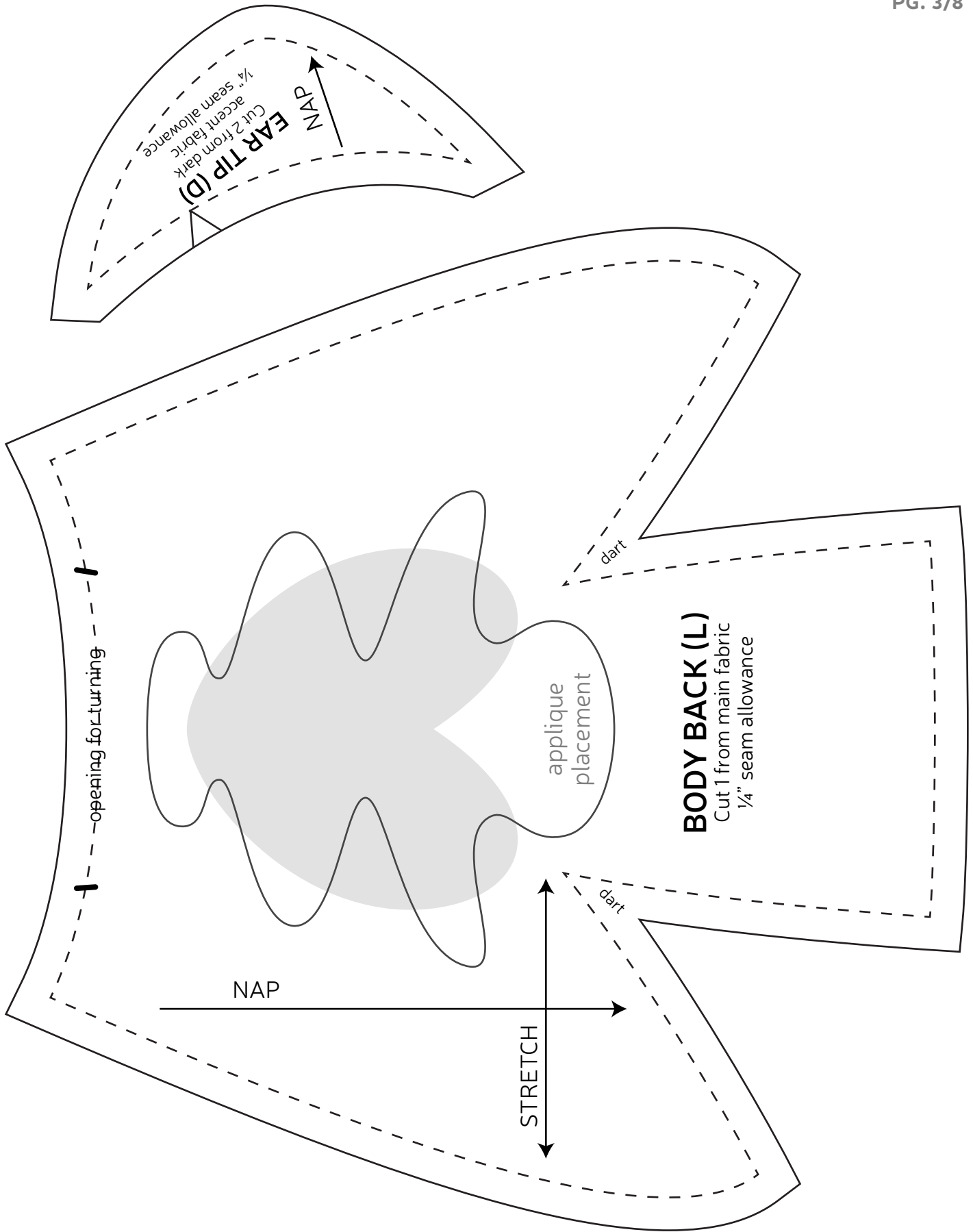
Cut 6 from dark accent fabric 1/4" seam allowance



**HEAD BACK (K)**

Cut 1 from main fabric 1/4" seam allowance





**EAR TIP (D)**  
Cut 2 from dark  
accent fabric  
1/4" seam allowance

DAN

opening for turning

applique  
placement

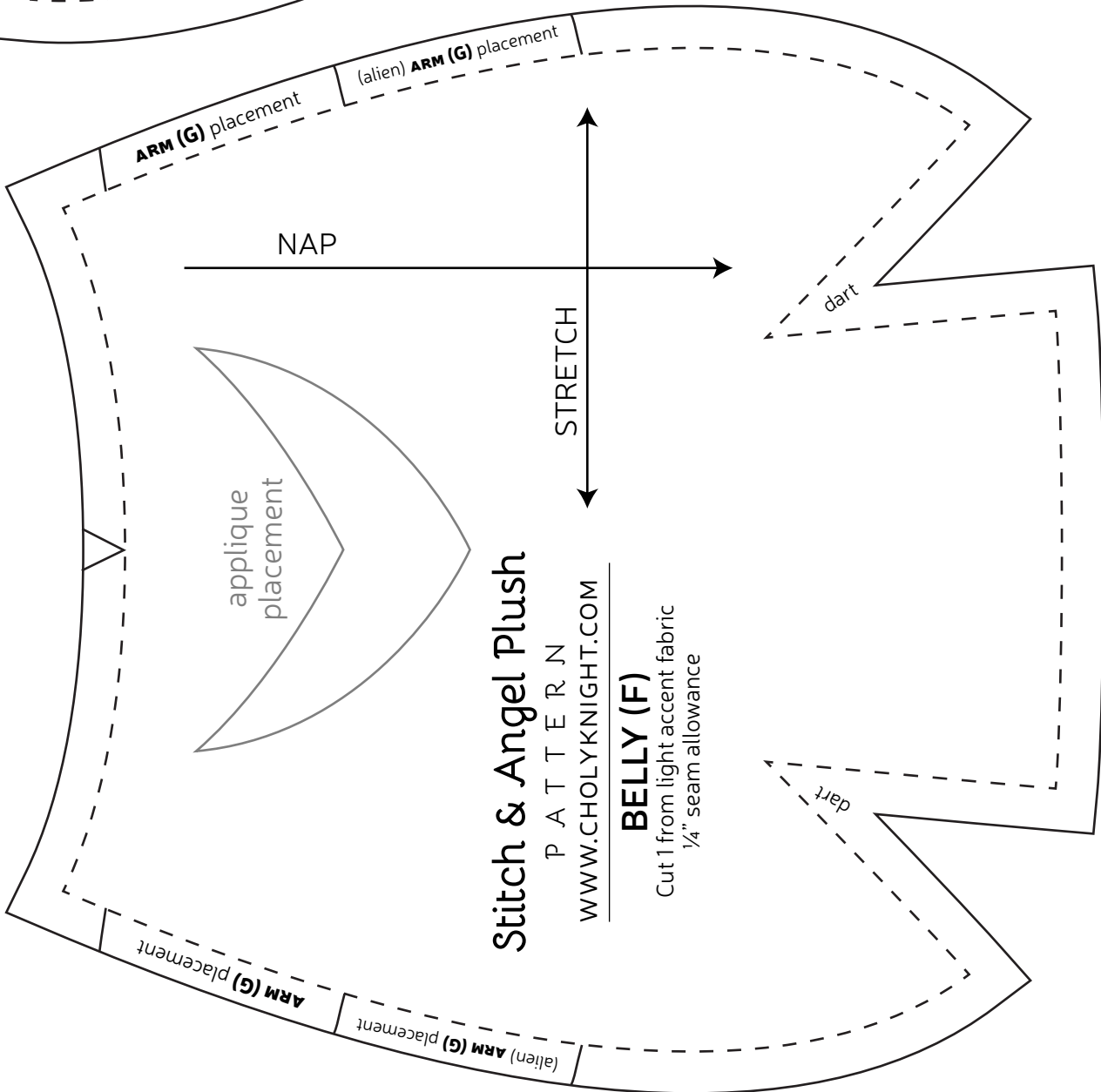
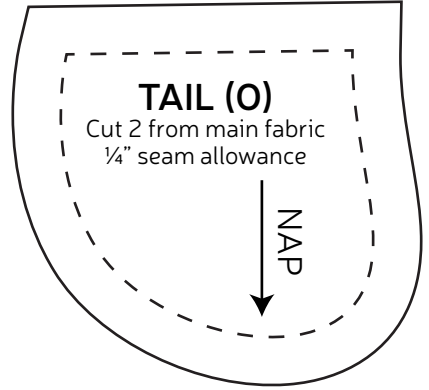
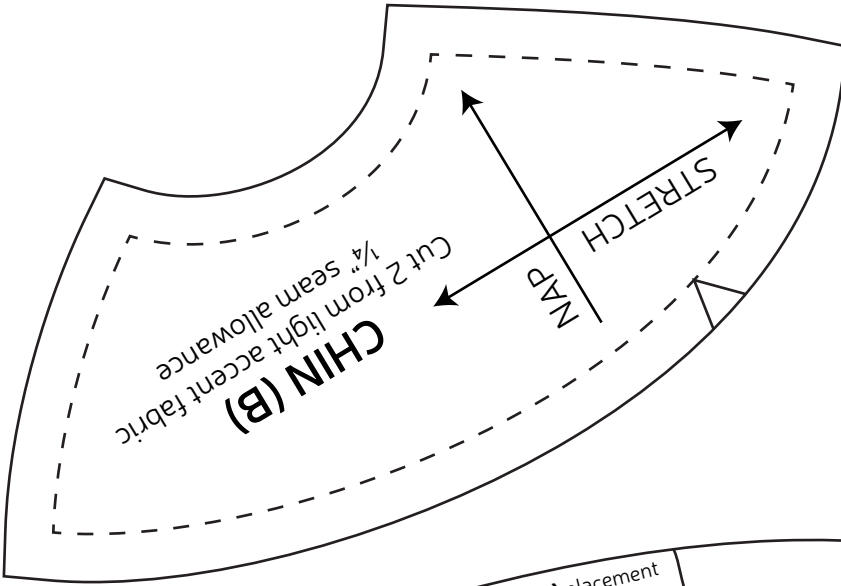
**BODY BACK (L)**  
Cut 1 from main fabric  
1/4" seam allowance

NAP

STRETCH

dart

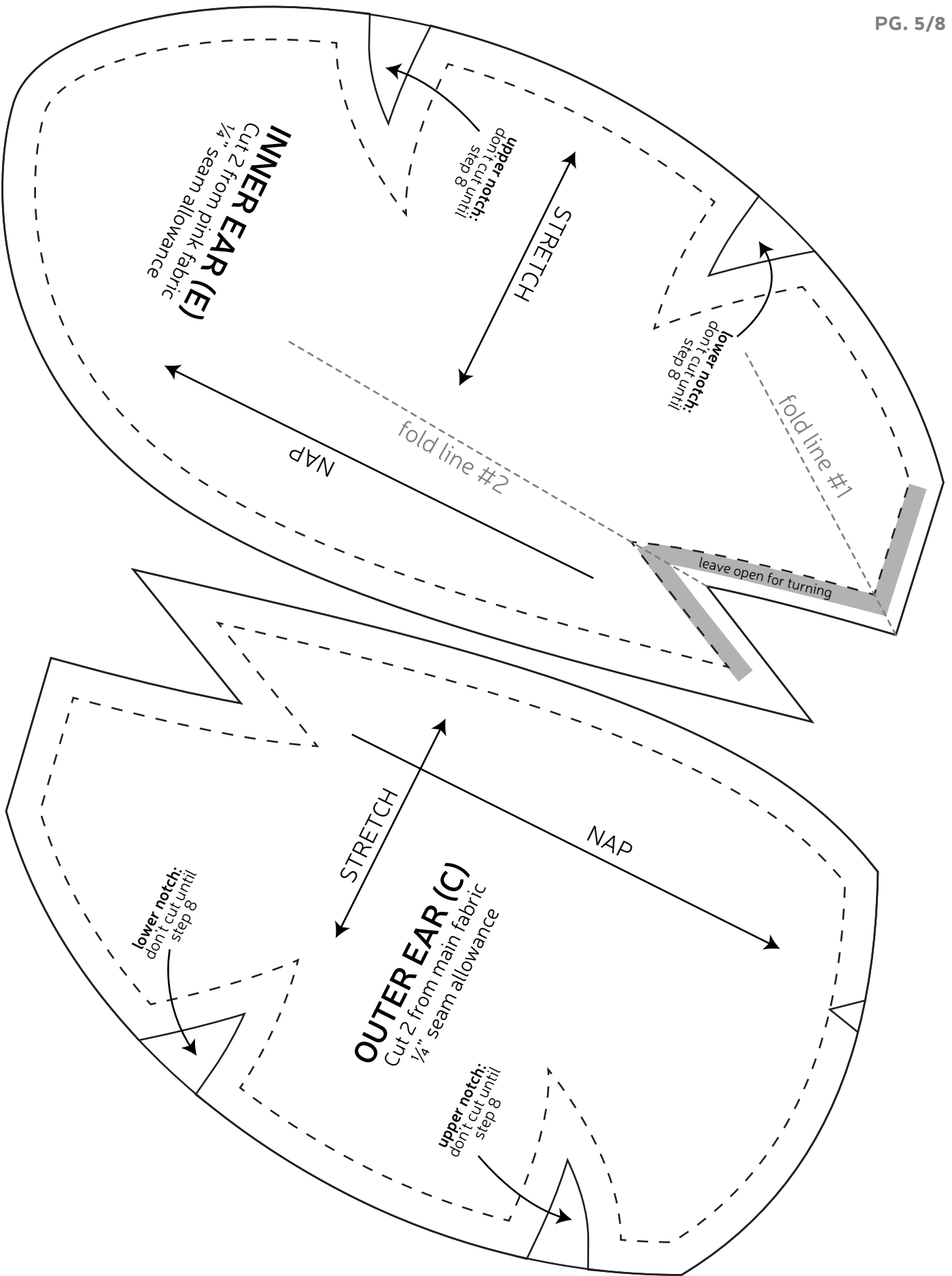
dart

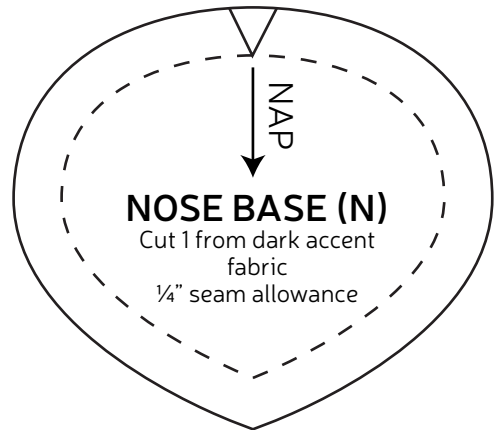
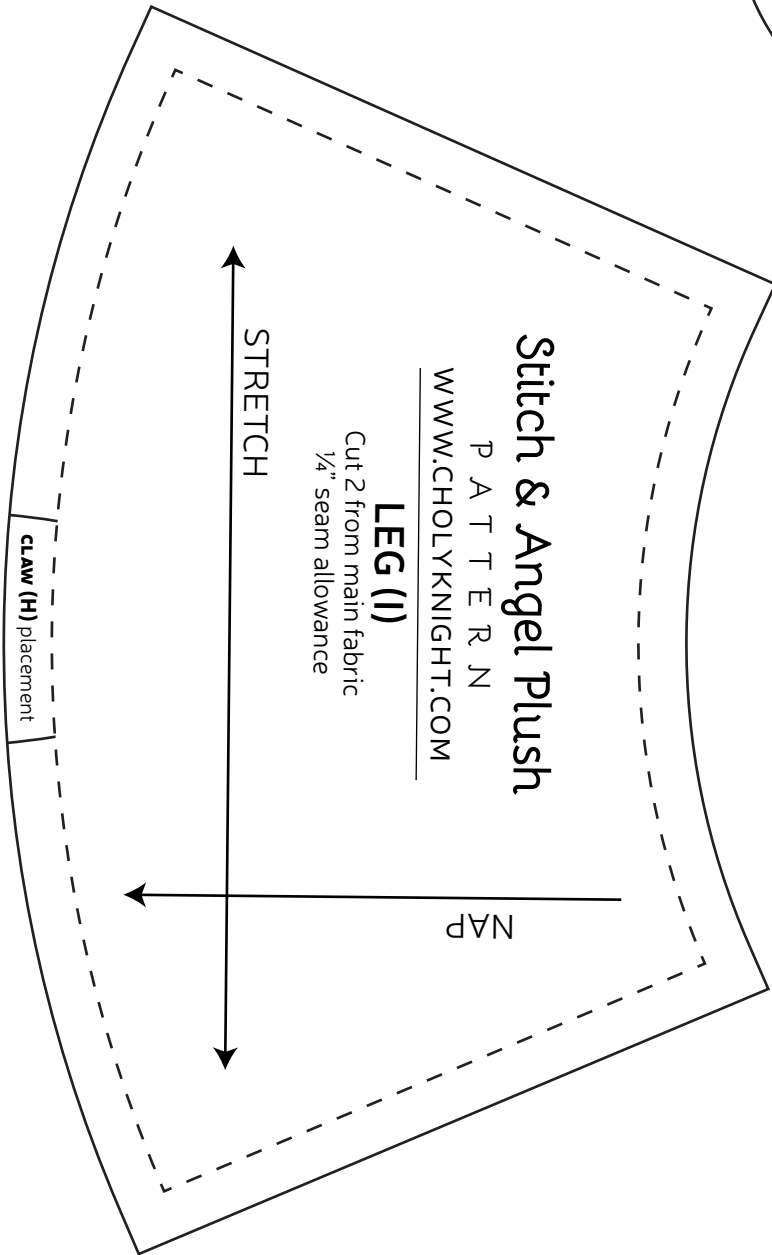
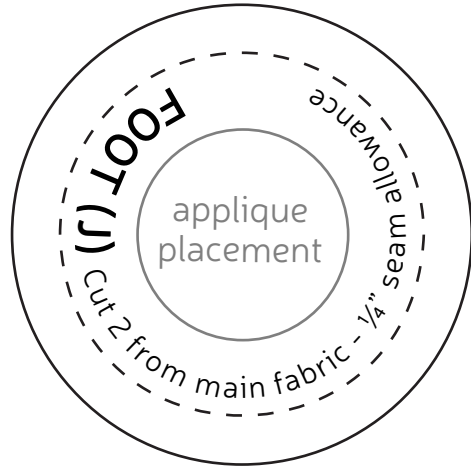
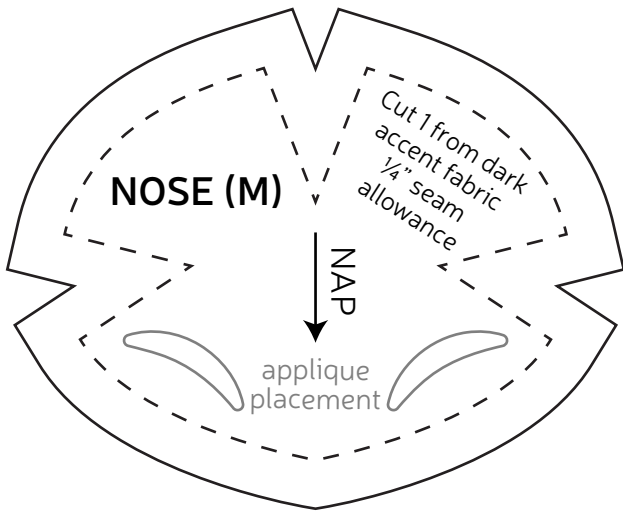


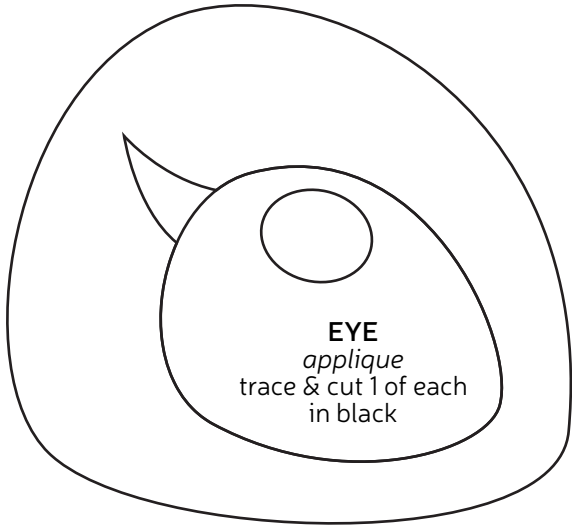
# Stitch & Angel Plush

P A T T E R N

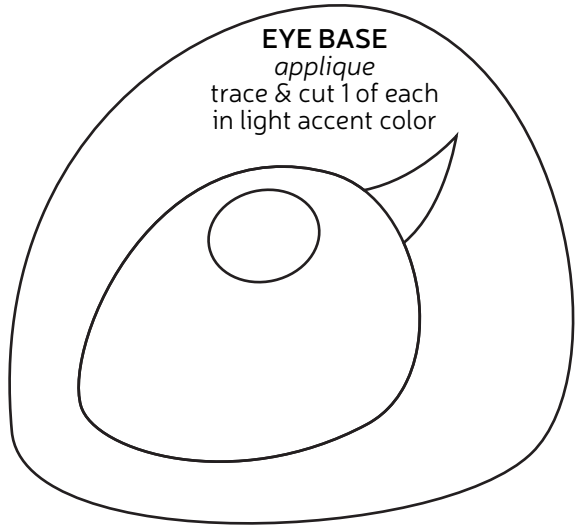
[WWW.CHOLYKNIGHT.COM](http://WWW.CHOLYKNIGHT.COM)



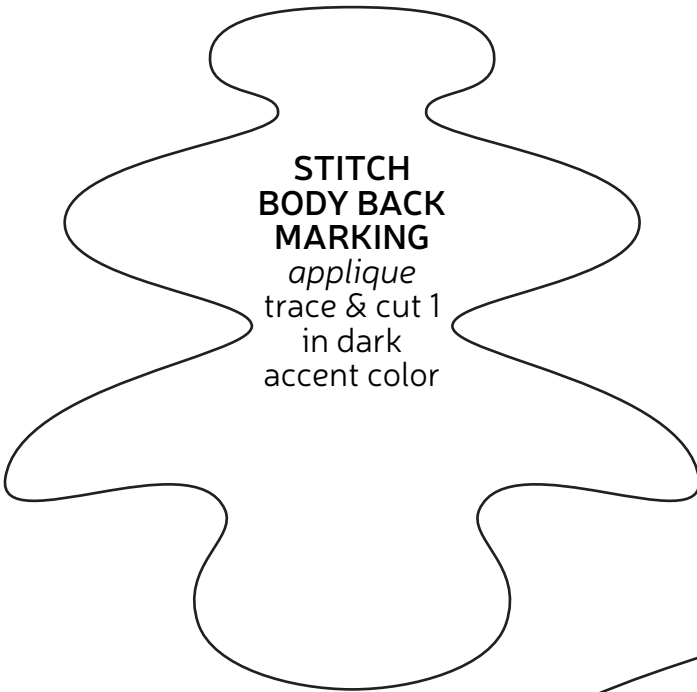




**EYE**  
*applique*  
trace & cut 1 of each  
in black

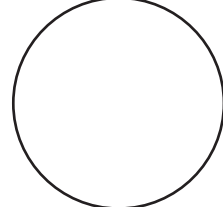


**EYE BASE**  
*applique*  
trace & cut 1 of each  
in light accent color

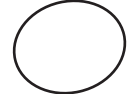


**STITCH  
BODY BACK  
MARKING**  
*applique*  
trace & cut 1  
in dark  
accent color

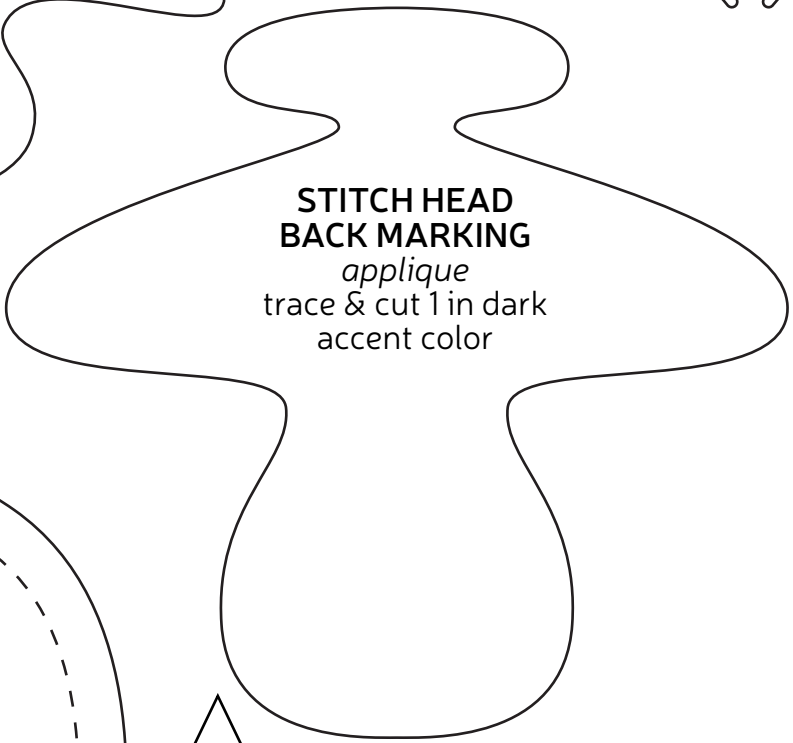
**PAW MARKING**  
*applique*  
trace & cut 4 in dark  
accent color  
(or 6 for alien Stitch)



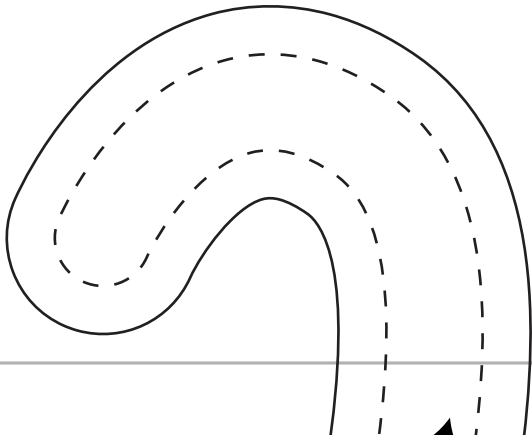
**EYE SHINE**  
*applique*  
trace & cut 2 in  
white



**NOSTRIL**  
*applique*  
trace & cut 1 of each  
in black



**STITCH HEAD  
BACK MARKING**  
*applique*  
trace & cut 1 in dark  
accent color





# ANGEL ONLY PIECES

PG. 8

