

⚡ PIKACHU ⚡ PLUSH



A FREE SEWING PATTERN BY



PIKACHU PLUSH

This pint-sized Pikachu is the perfect choice for your next Pokemon adventure! It features a chubby body in a sitting pose with tiny arms and legs as well as the classic pointy ears and lightning bolt tail.

In the pattern you'll find templates for both the original tail and the female style tail with a heart-shaped tip. There's also a shocked face option in addition to the classic face.

DIFFICULTY:



This plush has a lot of darts in the head, which can get tedious. The feet, arms, and ears are also attached by hand. So be aware of the time needed there.

But the most difficult part is in sewing the legs, which involves a good bit of curved sewing. If you take it one section at a time following the directions, you'll have more success.

SKILLS USED:

- Fusible web applique
- Curved sewing
- Basting
- Darts
- Ladder stitch
- Sewing small pieces
- Matching notches and points

MAKES:

One plush: about 6" tall (not including ears), 4½" wide, and 5" long.

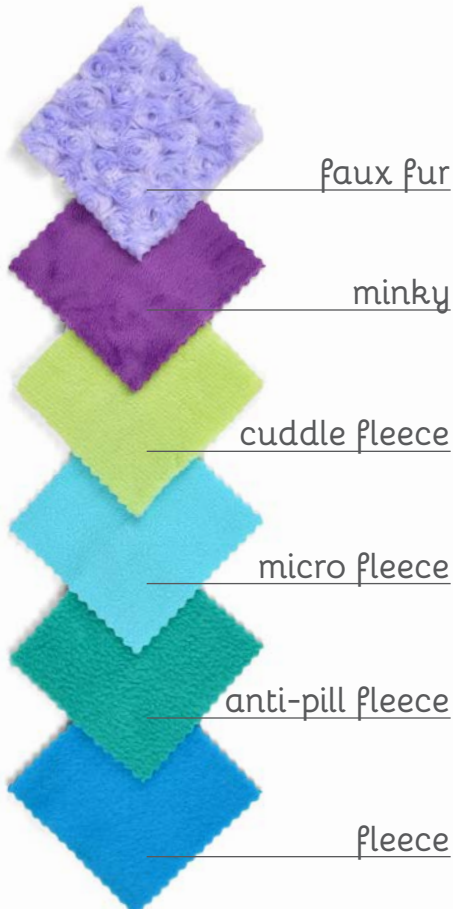


sew desu ne?

| WWW.CHOLYKNIGHT.COM |

materials & tools:

- ¼ yd. of fabric for main body
- ⅛ yd. or 8" x 5" of ear tip fabric
- 3" x 3" piece of black applique fabric (flannel, felt, fleece, cotton, etc.) for eyes, nose, and mouth
- 2" x 2" piece of white applique fabric for eye shines
- 3" x 3" piece of red applique fabric for cheeks
- 5" x 5" piece of brown applique fabric for eye highlights, back stripes, and tail base
- **FOR SHOCKED MOUTH:** 2" x 2" of dark red and pink applique fabric
- 7" x 7" piece of light or heavy duty fusible web
- sewing thread to match main fabric and applique fabrics
- poly-fil stuffing
- basic sewing tools (sewing machine, scissors, iron, needles, pins, fabric marker, seam ripper)



SUGGESTED FABRICS:

Plush, stretchy fabrics such as fleece or minky are suggested. The variations of fleece and minky mentioned to the left would work well, but really any plushy fabric with a bit of stretch on the crosswise grain would be well-suited.

Stretch fabrics like **FLEECE** or **MINKY** will create a more squat, round shape when stuffed.

Non-stretchy fabrics, like **FELT** or **COTTON**, won't stretch when stuffed so the resulting plush will look elongated as shown.

MINKY

VS.

FELT

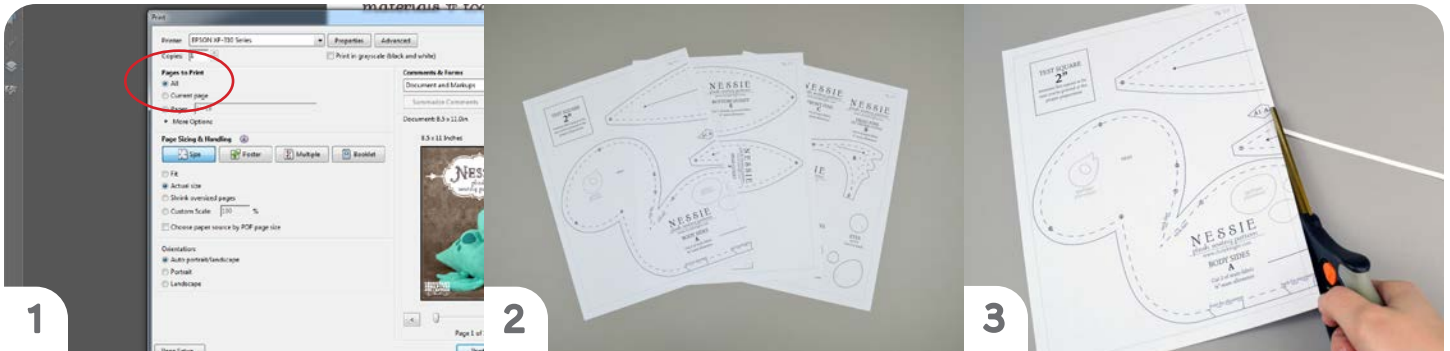


sew desu ne?

| WWW.CHOLYKNIGHT.COM |

printing the pattern:

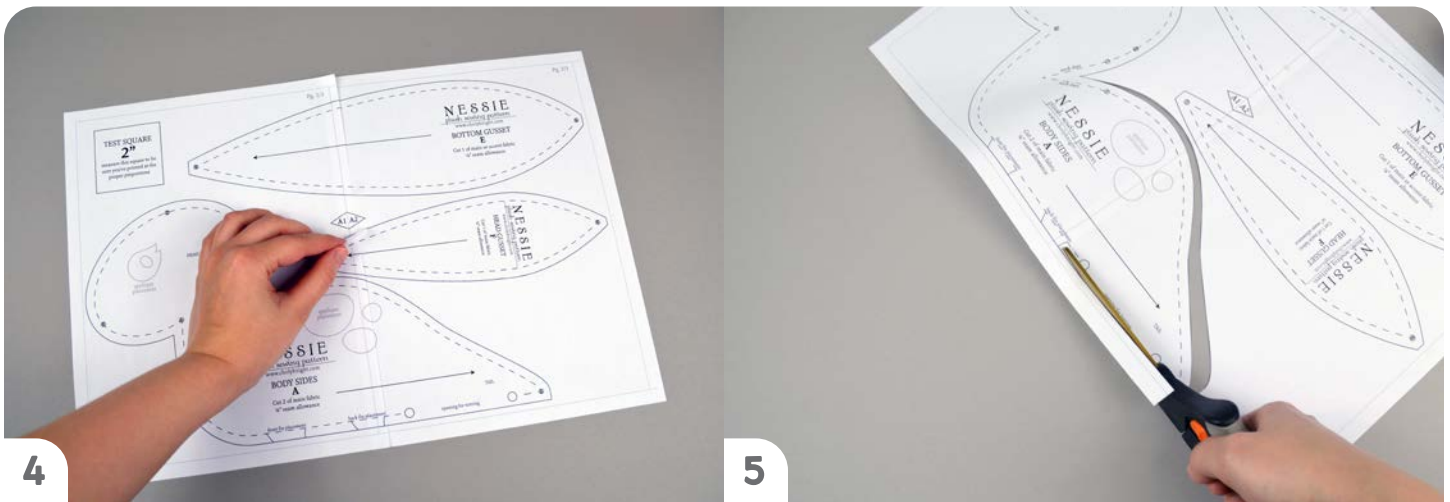
To print the pattern, set your computer to print **PAGES 23-26**. If you're unfamiliar with printing and assembling a .pdf pattern, read the steps below.



1 At the print dialog box, check the box that says print at "Actual Size" or 100%. Any other selection (such as "Fit to page") will distort the pattern so it's slightly larger or smaller and we don't want that.

2 Print the pages needed for the file. You might have one or more. Either way, be sure you have the full collection by noting the page numbers in the corner.

3 It's likely your printer will have a margin that ensures your image doesn't print to the very edge. Assembly will be easier if you trim off this blank margin edge. This will give you pages that overlap slightly during assembly. If you trim across the gray outline boxes, this will give you pages that don't overlap but rather butt against each other.



4 To line up the pattern pages, match up the corresponding diamond shapes. Each diamond will have a letter, so it's simply a matter of matching A1 to A2, B3 to B4 and so on. The faint gray lines indicate the border of every page, you should be able to line those up as well. When the diamond goes together, tape it in place. If you have many pages, it's easier to tape up the pages into rows first. Then tape the rows together into a full block.

5 You can trace the patterns onto a different paper, or you can also just cut them straight from the printer paper -- be sure that each piece is fully taped together along the joins so they don't fall apart when you cut them.

sew desu ne?

| WWW.CHOLYKNIGHT.COM |

cutting the fabric:



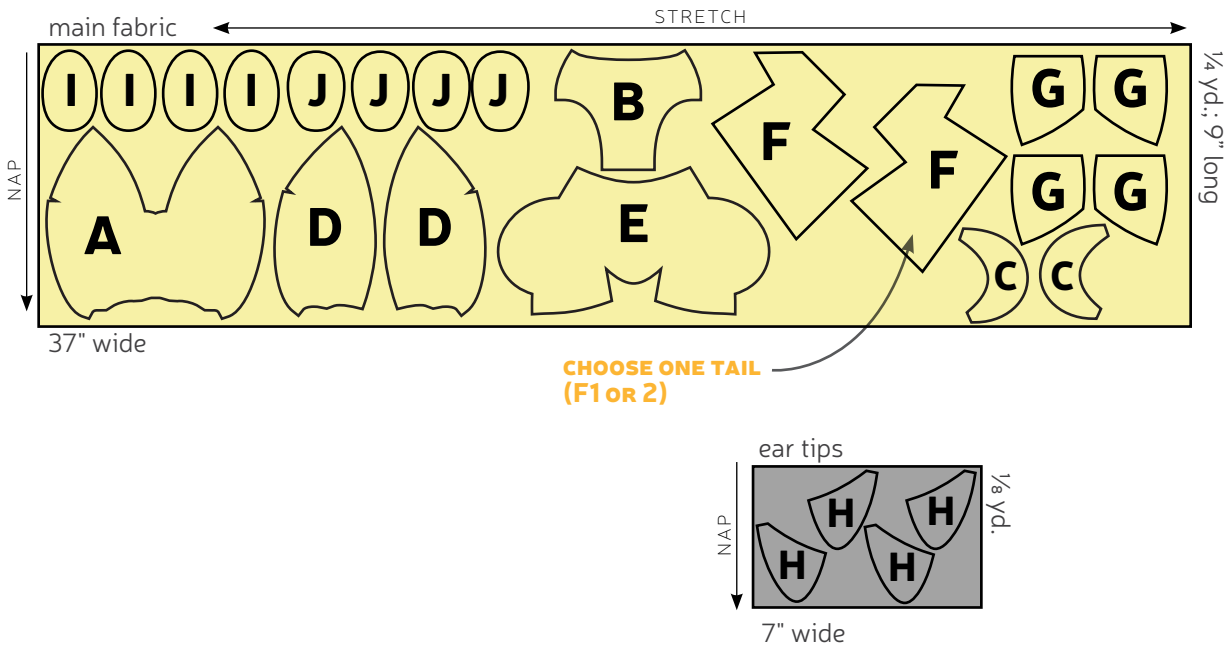
1 Place pattern on the fabric, and make sure the stretch line matches the stretch of the fabric. The nap line should go in the direction of the fur.

2 Pin the pattern in place, use pattern weights, or trace the outline of the pattern with a washable marker.

3 Using the paper as a template, cut out the fabric. Cut the required amount according to the pattern.

4 For all fur fabrics, shake the excess fuzz away.

cutting layout:



BEFORE YOU BEGIN:

- Briefly read the project instructions so you know what to expect.
- If desired, mark the cut fabric pieces with the markings and symbols from the pattern. Or wait until the applicable step before transferring.
- Note that a 1/4" seam allowance is used throughout the project unless otherwise mentioned.

sew desu ne?

| WWW.CHOLYKNIGHT.COM |



trace onto paper side



eyes, nose, mouth - black
eye highlights, stripes, tail - brown

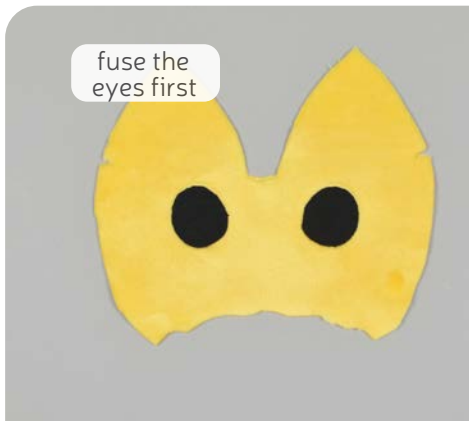


hold applique while pulling paper away

1. PREPARE THE FACE APPLIQUE

cheeks - red
eye shines - white

- Take your fusible web and trace all your applique pieces onto the smooth (paper) side. For the face, you should have 2 **eyes**, 2 **eye shines**, 2 **cheeks**, 1 **nose**, and either the standard **mouth** or **shocked mouth**. You can also trace and fuse the applique for the **back stripes** and **tail bases** which we'll use later in step 3.
- Fuse the bumpy (adhesive) side onto the wrong side of your applique fabric. The **eyes** go onto black, the **eye shines** on white, the **cheeks** on red, the **nose** on black, and the **mouth** on dark red & pink.
- Cut out the **eyes** and arrange them on the **HEAD FRONT (A)** piece. Set your paper pattern on top of the fabric piece (right sides up). Align the **eye** piece on top where the placement markings are. Then carefully pull the paper pattern away while holding the applique piece in place.



fuse the eyes first



add smaller pieces next



sew around outside of each piece

2. FUSE THE APPLIQUE

- Fuse the **eyes** in place with your iron. Use a press cloth (like a scrap piece of cotton) if you're using a polyester or fuzzy fabric like minky, that will help prevent harming or melting the fabric.
- Next, move onto the smaller pieces: the **cheeks**, **eye shines**, **nose**, and **mouth**. Fuse them the same way as you did the **eyes**, using the paper pattern and photos as a guide
- If you used heavy duty fusible web, you can keep the pieces fused without sewing, or you can sew them in place a number of ways. I've used a zigzag stitch here.

→ Refer to the next page for some other applique options.

sew desu ne?

| WWW.CHOLYKNIGHT.COM |

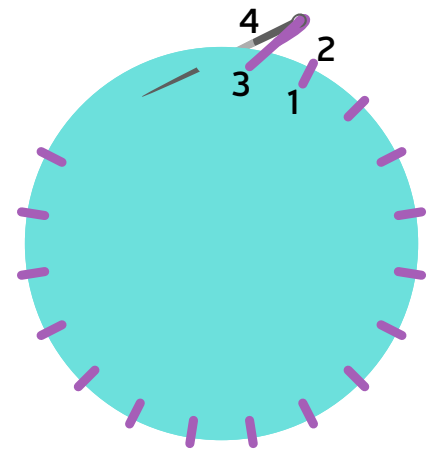
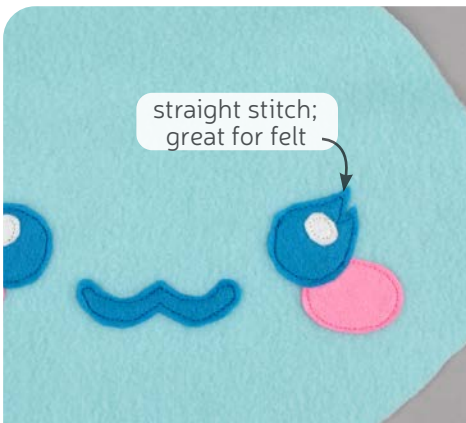
- a. Repeat the same process for the **back stripes** on your **BODY BACK** piece (E).
- b. Also add **tail bases** to the narrow end of your **TAIL** pieces (F).

As before, If you used heavy duty fusible web, you can keep the pieces fused without sewing, or you can sew them in place a number of ways. I've used a zigzag stitch here.

→ **Refer to the next step for some other applique options.**



3. APPLIQUE THE BACK AND TAIL



3a. OTHER APPLIQUE OPTIONS

- a. Other good options for applique include a straight stitch, which involves sewing around the edge of the applique pieces with a straight stitch using matching thread -- about 1/8" in from the edge.
- b. You can also applique by hand; I prefer a whipstitch. Thread a hand-sewing needle with some matching thread and knot it. Bring the thread up from the back of the project; about 1/8" in from the edge of the applique shape. Bring it down perpendicular from the curve, just outside of the applique shape. This completes one stitch.
- c. For the next stitch, bring the needle back up about 1/8" away from the previous stitch and 1/8" in from the edge just as in the first stitch. Once again, bring it down just outside the applique shape. Continue this way until you've sewn around the shape.

sew desu ne?

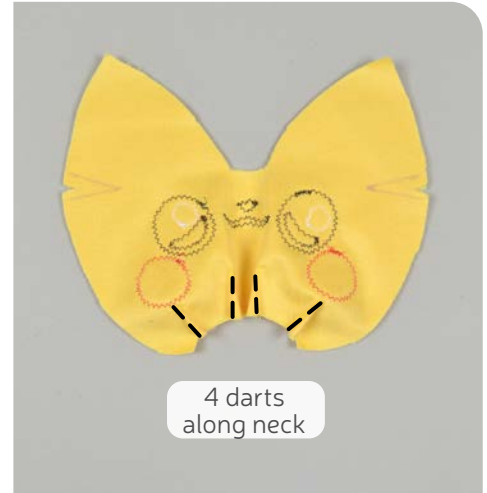
| WWW.CHOLYKNIGHT.COM |



transfer seam lines from darts



blend stitching into fold



4 darts along neck

4. SEW THE BOTTOM HEAD FRONT DARTS

- Grab your **HEAD FRONT** piece (A). You'll notice it has many **darts** all over the outside edge. First we'll be sewing the four small **neck (bottom) darts**. Since they are so small, it helps to transfer the stitching lines from the paper pattern. Trim away the paper along the stitching lines, and use it as a tracing template on the wrong side of your fabric.
- Fold the fabric with right sides together along the point of the **dart**, matching up the seam lines you've just traced. Sew along the traced line to complete the **dart**. Start at the opening and work toward the point, and try to blend your stitching into the fold of the fabric. This will create a rounder finish for your plush.
- When complete, this will start to bring in the neck edge of your Pikachu's head. Repeat three times more with the remaining three neck **darts** located at the bottom.

DARTS:

A wedge-shaped gap found in a pattern. When sewn in fabric, it creates a tuck in the fabric and develops a 3D shape. The diagonal sides of the wedge are the **LEGS**; these are matched up and sewn to the **POINT** of the dart.



fold along point of dart



blend stitching into fold



one dart on each side

5. SEW THE SIDE HEAD FRONT DARTS

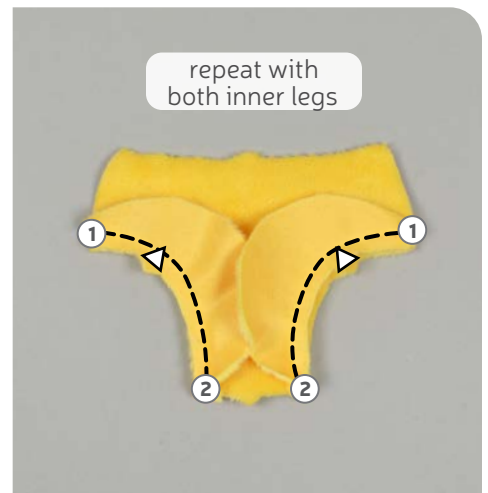
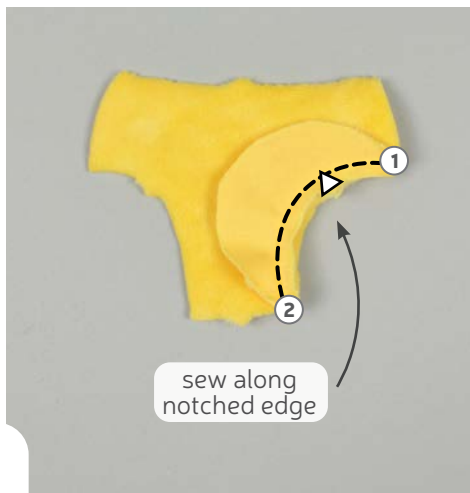
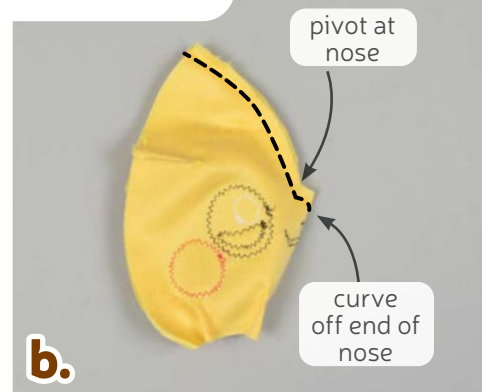
- Repeat the same process with the **darts** on the side of the **HEAD FRONT** (A). Fold the fabric with right sides together along the point, and the traced seam lines should match up.
- Sew one **dart** on each side of the head. As before, try to blend your stitching into the fold for a rounder finish.
- Open up the head when complete.

sew desu ne?

| WWW.CHOLYKNIGHT.COM |

- a.** The center top of the **HEAD FRONT (A)** has the final **dart**. Fold the head front in half with right sides facing to match up the slanted lines in the middle.
 - b.** Sew the head front pieces together along this center edge. At the corner of the nose, pivot your stitching and sew a curve off the edge for the nose.
 - c.** Clip the seam allowance at the corner where you pivoted. This will help increase flexibility when the piece is turned.
 - d.** Turn the head right side out and it should look something like **photo D**. There should be **7 darts** total: 4 in the neck, 2 on the sides, and 1 in the center top.
- **Set aside the head for a moment while we make the body front.**

6. SEW THE TOP HEAD FRONT DART



7. SEW THE INNER LEGS

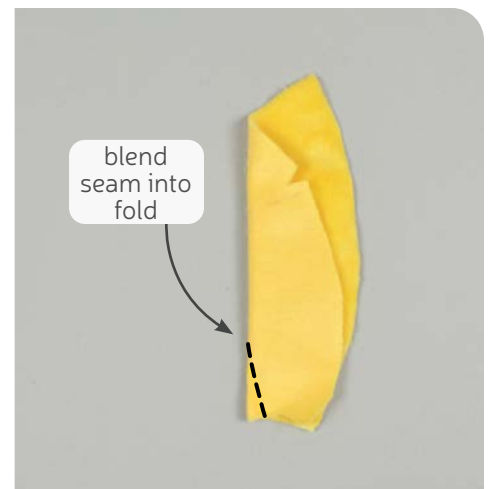
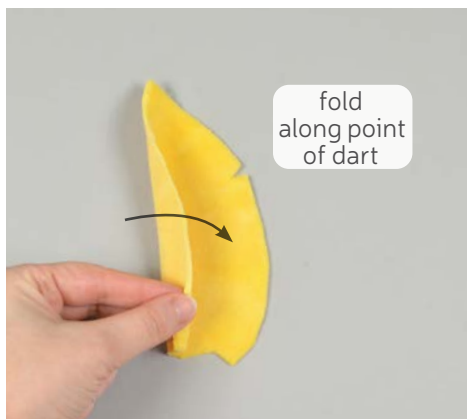
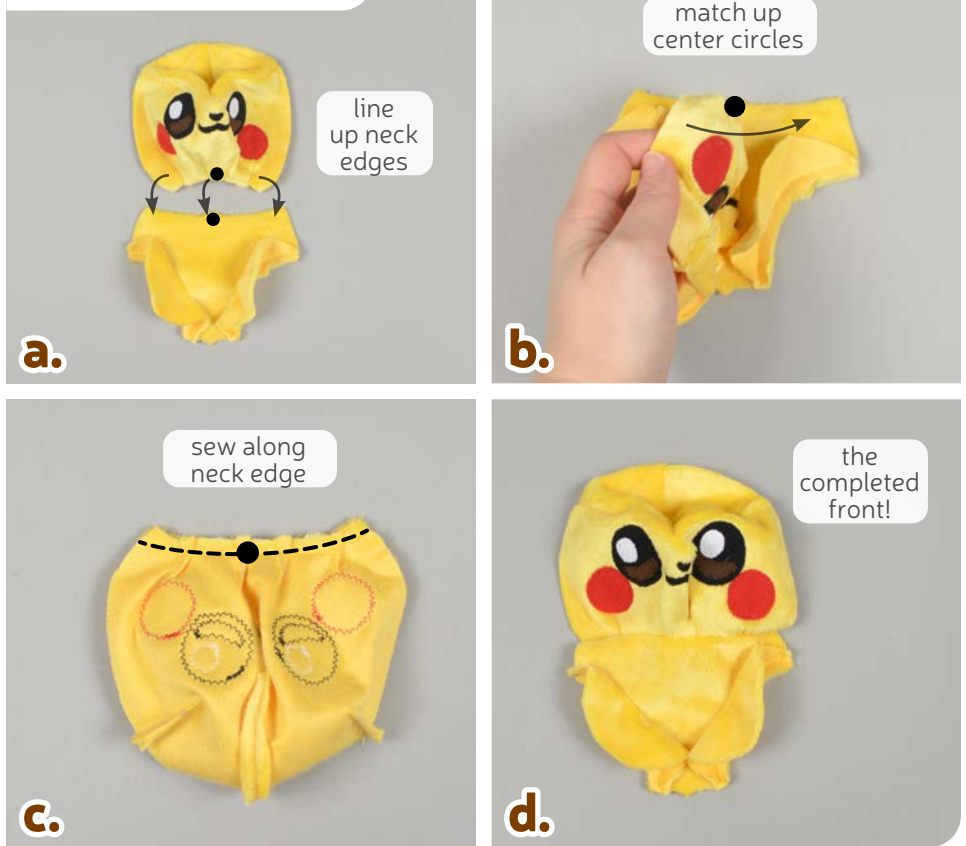
- a.** Grab your **BODY FRONT (B)** and **INNER LEG** pieces (C). Align the inner curve of the inner leg with the inner curve of the body front. Match up the **notches** on both pieces to help ensure they're not flipped the wrong way. They also have numbered points, which will be helpful later in step 19.
- b.** Sew the inner leg to the body front along the inner curve from points 1 to 2.
- c.** Repeat with the other inner leg piece so both are joined.

sew desu ne?

| WWW.CHOLYKNIGHT.COM |

- a.** Grab your **HEAD FRONT** piece from before (A) and your **BODY FRONT** with the **INNER LEGS** attached (B-C). The **neck edges** of both of these pieces will be joined next. The neck edges are marked with a **circle marking** in the center for easy identification and alignment.
- b.** Layer the head front over the body front, matching up the raw edges and **circle marking** at the center. Pin the fabrics together.
- c.** Sew the head front to the body front along this **neck edge**.
- d.** Open up the pieces when complete.
- **Set your body front aside for a while as we construct the back.**

8. SEW THE NECK



9. SEW THE LOWER HEAD BACK DARTS

- a.** Grab your **HEAD BACK** pieces (D). These have small **neck darts** just like the **HEAD FRONT** back in step 4. Sew them accurately by tracing the seam line from the paper pattern.
- b.** Fold the fabric in half with right sides together, matching the traced lines.
- c.** Sew the **dart** by starting at the opening, then going down to the fold. Blend the stitching into the fold for a smooth transition and a rounder finish. Repeat with your other head back piece so both pieces have finished neck darts.

sew desu ne?

| WWW.CHOLYKNIGHT.COM |



10. SEW THE SIDE HEAD BACK DARTS

- Repeat the process with the **side darts** (just like with the **HEAD FRONT** back in step 5). Fold the fabric with right sides together along the point of the dart. Match up the slanted lines.
- Sew from the opening of the **dart** down to the point. Blend the stitching into the fold for a smooth transition and a rounder finish.
- Repeat with your other head back piece so both pieces have finished **darts**.

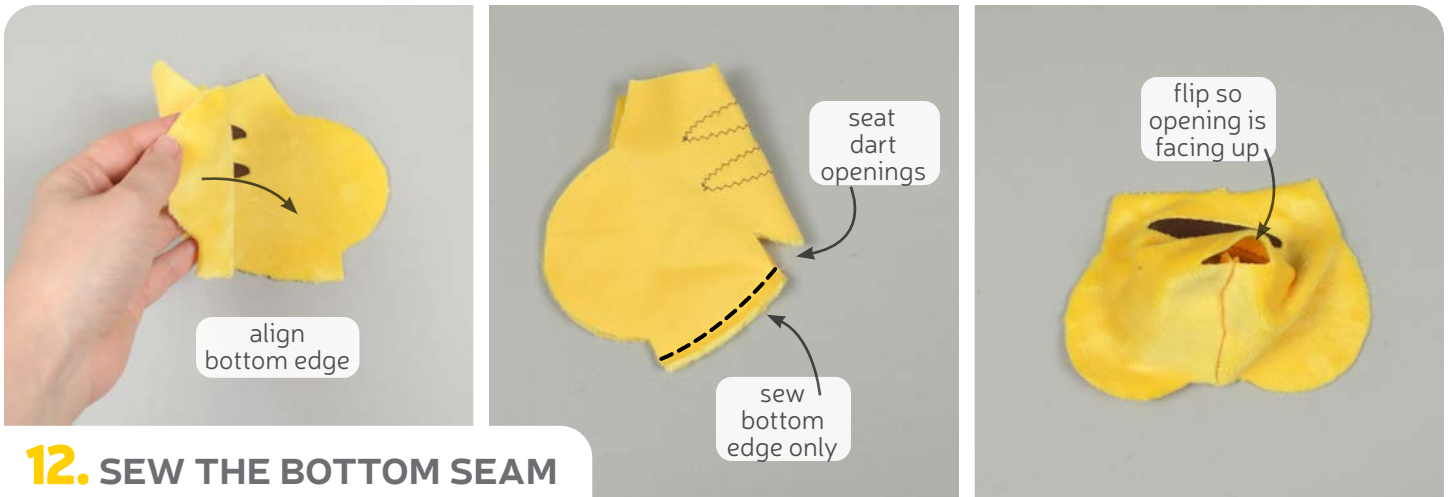


11. SEW THE HEAD BACK

- Grab both of your **HEAD BACK** pieces (D). Align them with right sides facing and raw edges matching up.
- If you haven't already, locate the **opening for turning markings** found on the paper pattern for the head back. Transfer them over to the wrong side of the fabric. Sew the head back pieces together along this edge only, but leave the opening that you marked.
- Open up the pieces when complete.
 - **Set aside your head back for a little while as we work on the body back.**

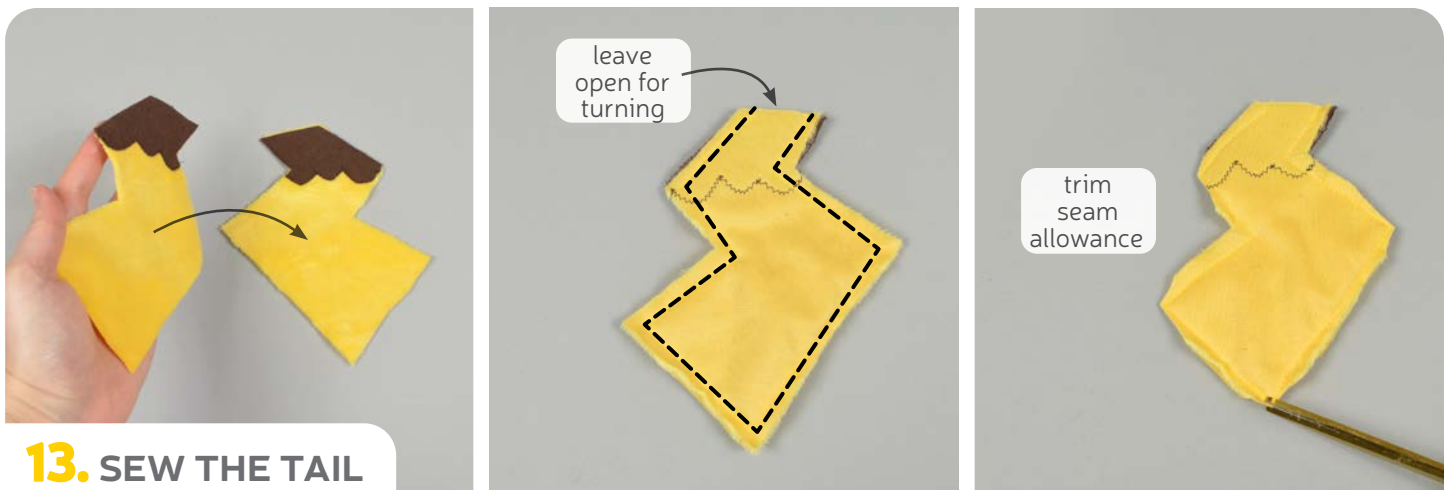
sew desu ne?

| WWW.CHOLYKNIGHT.COM |



12. SEW THE BOTTOM SEAM

- Grab your **BODY BACK** piece (E). Fold the piece in half with right sides together, matching up the **bottom edges**. These are the slightly curved edges found beneath the outer **leg** curves. They're also labeled on the paper pattern for easy identification.
- Sew the body back piece together along the **bottom edge**.
- When complete, flip it right side out so the opening in the bottom corner is facing up. This is the **seat dart** and we'll be attaching the **TAIL** into this opening. Set your piece aside for a quick moment while we create the tail.



13. SEW THE TAIL

- Grab your two **TAIL** pieces (F1 or 2). Align them with right sides facing and raw edges matching up.
- Sew the tail pieces together along the outer edge. The short edge at the base of the tail should be left open for turning the piece later.
- Trim the excess seam allowance at the corners of the tail to both reduce bulk and increase flexibility when the tail is turned next.

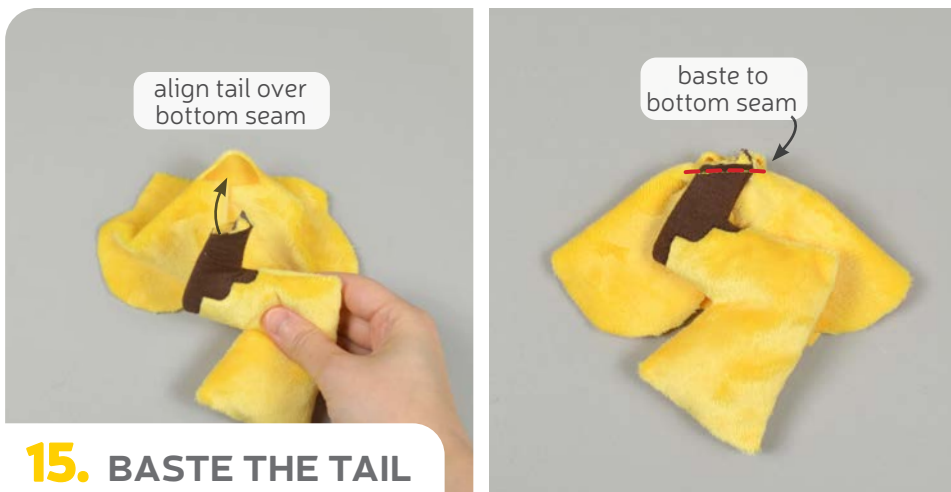
sew desu ne?

| WWW.CHOLYKNIGHT.COM |



14. TURN AND STUFF THE TAIL

- Turn the **TAIL** right side out through the opening you left in the base.
- Stuff the tail very lightly with stuffing, just enough to puff up a little.



15. BASTE THE TAIL

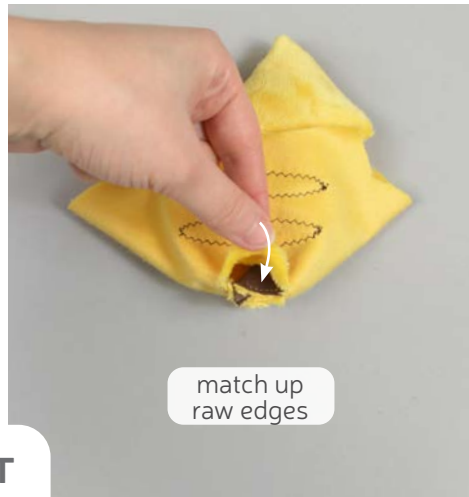
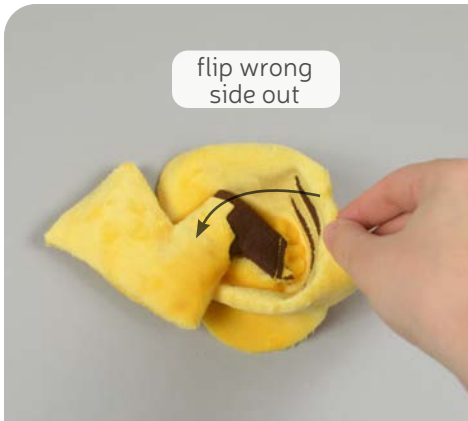
- Take your sewn **TAIL** and align it over the **bottom seam** you made back in step 12. The raw edge should align with the opening on the **BODY BACK (E)**.
- Baste the tail to this edge to hold it in place while we sew the opening closed next.

BASTING:

A form of temporary sewing meant to hold pieces in place. A long stitch length is often used for this reason. The finished result is not meant to be seen and sometimes is even removed later (depending on your project).

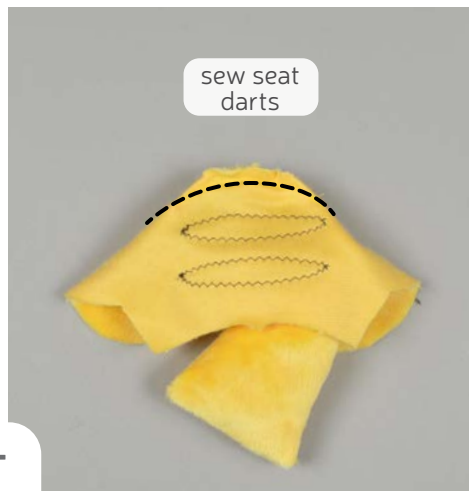
sew desu ne?

| WWW.CHOLYKNIGHT.COM |



- a. Flip the **BODY BACK (E)** so it's wrong side out. This should sandwich the **TAIL** inside.
- b. Next, from the outside, match up the raw edges of the opening found in the back (the **seat darts**) so the tail is flat between the two layers.

16. FIND THE SEAT DART



17. SEW THE SEAT DART

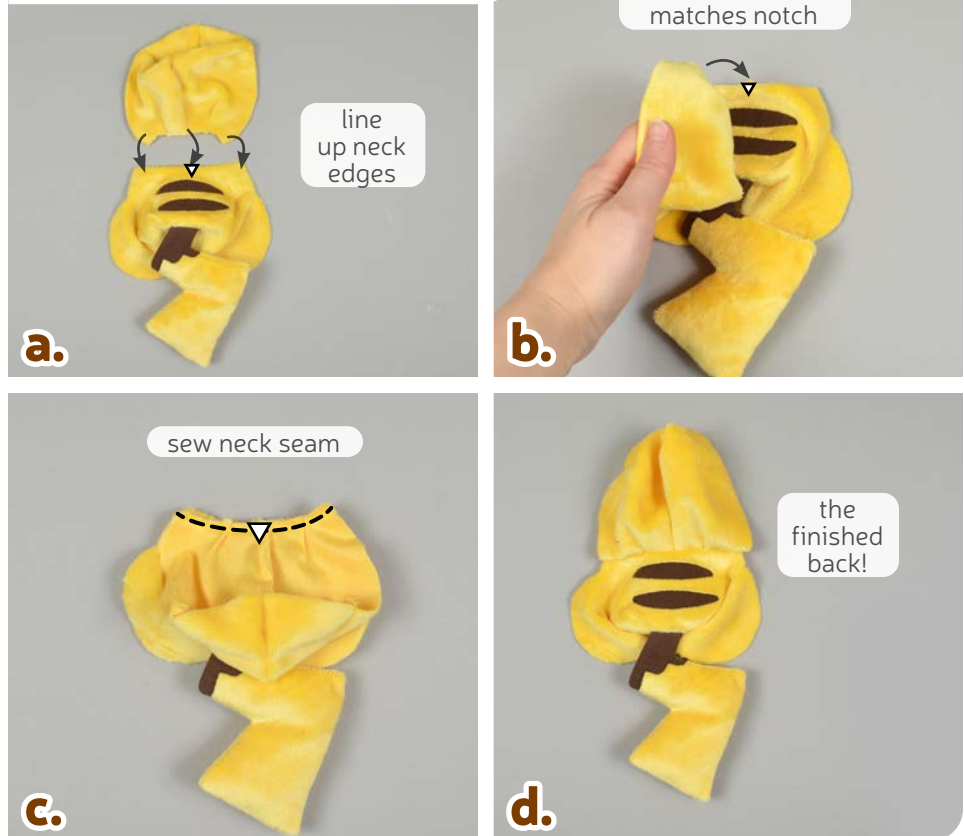
- a. This opening in the back is essentially two **darts** joined end to end. So you can sew it much the same way. For extra help sewing it accurately, you can use the seam line from the paper pattern to find the starting and ending points.
- b. Sew the dart starting at one corner and curving around to the other.
 - **TIP:** *if you have trouble sewing a curve and can only manage a straight line, that's fine too. A curve will just look a little better in the finished plush.*
- c. When you turn the body back right side out, this should leave the tail secured in the **dart** seam.

sew desu ne?

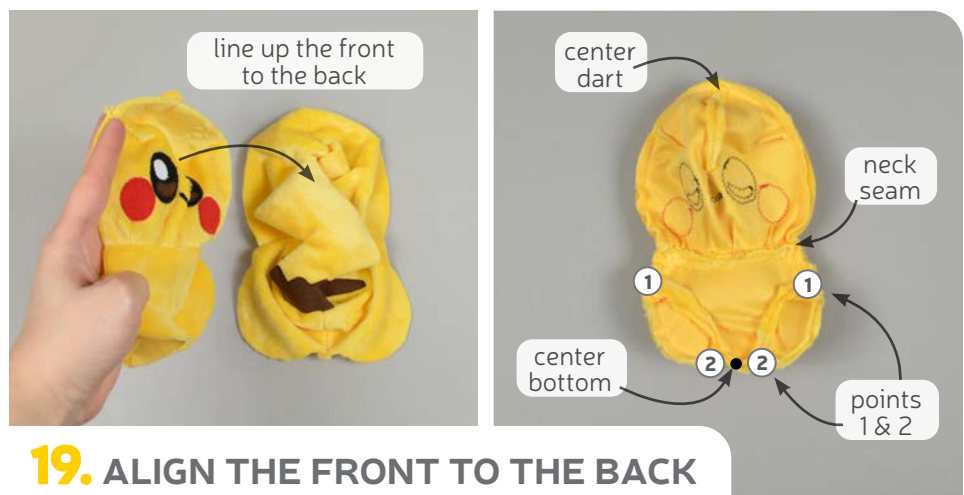
| WWW.CHOLYKNIGHT.COM |

- a.** Grab your **HEAD BACK** pieces from before (D) and your **BODY BACK** with the **TAIL** attached (G-F). The **neck edges** of both of these pieces will be joined next. The **neck edge** is marked with a **notch** on the body back for easy alignment and identification.
- b.** Layer the head back over the body back, matching up the raw edges and **center notch** with the **head back seam**. Pin the fabrics together.
- c.** Sew the head back to the body back along this **neck edge**.
- d.** Open up the pieces when complete.

18. SEW THE NECK SEAM



- a.** Grab both of your front and back pieces so far. Align them with right sides facing. Before you pin, note that there are certain crucial points that should match up. We'll go over them in general here, for advanced sewers. Then in the next 2 steps it will be in more detail.
- b.** Pin the front to the back, matching up the **center front dart** with the **head back seam**.



19. ALIGN THE FRONT TO THE BACK

The **neck seams** (from steps 8 and 18) should also match up. At the body, **points 1** and **2** from the **INNER LEGS**, **BODY FRONT**, and **BODY BACK** should also align. The **center circle marking** on the body front will also match the **bottom seam** (from step 12).

sew desu ne?

| WWW.CHOLYKNIGHT.COM |



20. SEW THE HEAD, SIDE, AND LEG

- Begin by pinning and sewing the head. Line up the **neck seams** (from steps 8 and 18). Next match up the **head back seam** (from step 11) with the **center top dart** (from step 6). The **side darts** (from steps 5 and 10) will also match up. Sew around the entire head.
- Next, line up the side of the **BODY** pieces. This is the edge starting at the neck and going down to **point 1**. Sew the body front to the back at this side.
- Next, pin and sew around the leg. This is the outer curve going around the **INNER LEG** piece (C) and joins to the outer curve of the **BODY BACK** (E). It starts at **point 1** and goes around to **point 2**.



21. SEW THE CENTER, AND OTHER SIDE

- At the edge between the legs, the **center circle marking** on the **BODY FRONT** (B) will match up with the **bottom seam** (from step 12). Pin and sew between the legs, from one **point 2** to the other.
- Lastly, finish up the other side by repeating the parts from step 20. Sew from **point 2 to 1**, then up the side, ending at the **neck seam**. This should take you all the way around the body.
- Finish by clipping the seam allowances at the corners of the body, particularly at the **neck seam** and **points 1 and 2**.

sew desu ne?

| WWW.CHOLYKNIGHT.COM |



22. STUFF THE BODY

- Turn the body right side out through the opening in the back of the head.
- Begin by stuffing the legs with stuffing. Fill the legs really tightly, as they like to deflate and force the stuffing out.
- Fill up the rest of the body, and sneak extra bits of stuffing into the legs if necessary. Having the rest of the body filled with stuffing will help keep the legs from deflating. Keep filling the body until it's firm before moving onto the head.



23. STUFF THE HEAD

- Move onto stuffing the head. Start by filling up the nose so it sticks out and doesn't have any wrinkles.
- Next fill up the rest of the head very firmly until there are no wrinkles in the fabric.
- Once the plush is stuffed, make sure the seam allowances in the opening are tucked inside and prepare to ladder stitch it closed. Thread a hand-sewing needle and knot it at the end. Insert the needle from the inside of the opening and out of the plush near one edge of the opening. This will leave the knot inside the plush.

sew desu ne?

| WWW.CHOLYKNIGHT.COM |



24. LADDER STITCH CLOSED

- Continue from here doing a ladder stitch. Take a 1/8" stitch into the fold of one side of the opening, then go across and take another. Keep going down the opening until you reach the end.
- When you're finished, stitch a knot into the end of the seam. Then insert the needle near the finished knot and out of the plush about 1-2" away.
- Pull the thread through and hold it taut while snipping the thread. The excess thread should sink back inside the plush -- all hidden!



25. SEW THE EAR TIPS

- Grab your **EARS** (G) and **EAR TIPS** (H). These pieces are sewn by matching up the *notched edges*. Align the edges with right sides facing and match up the *single notches*. This will ensure the pieces don't get flipped the wrong way.
- Sew the ear bases to the tips along the *notched edge*.
- When complete, open the pieces up. Repeat with your remaining ear pieces so you have two mirrored pairs as shown.

sew desu ne?

| WWW.CHOLYKNIGHT.COM |



26. SEW THE EARS

- Take two of your ear pieces that have opposing tips and align them with right sides facing and raw edges matching up.
- Sew them together along the curved edge. Leave the straight edge along the bottom open for turning the ear right side out.
- Turn the **EAR** right side out through the opening in the bottom.



27. CINCH THE EARS CLOSED

- Stuff the ears firmly with stuffing so they look nice and round.
- Thread a hand sewing needle and weave the thread back and forth about $\frac{1}{4}$ " per stitch around the opening of the **EAR**. This is a hand sewn gathering stitch.
- Tug at the thread to cinch up the opening so it closes. Sew a few knots across the cinched opening to hold the ear shut. If you have a lot of thread leftover, consider keeping it attached for adding to the head later.

GATHERING:

The process of shortening the length of a piece of fabric by sewing long stitches through it. When the thread is pulled, it forms small folds that ruffle the fabric.

GATHERING STITCH:

A long version of the running stitch, which is a stitch done by weaving the needle in and out of a length of fabric going along a line. The long stitches (about $\frac{1}{4}$ "- $\frac{1}{2}$ " long) gather the fabric when pulled later.

sew desu ne?

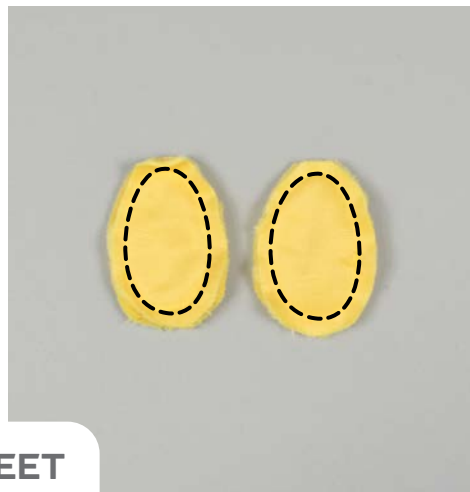
| WWW.CHOLYKNIGHT.COM |

- a. Grab your plush and align the ears over the side darts with the cinched end facing down. Also ensure the ear tips are *slanted away from the center*.
- b. Attach your ear to the head using a ladder stitch. Take one stitch into the base of the ear, then another into the head. Go around the first time with big stitches (about ½" long).



28. ATTACH THE EARS

After the first round, take a look at your plush and check that you like the placement. If not, the stitches will be easy to take out. When you do like the placement, go around the ear again with tiny, neat stitches (about ⅛" long) to secure the ears in place.



29. SEW THE ARMS & FEET

- a. Grab your **FOOT** pieces (I). Take two and align them with right sides facing and raw edges matching.
- b. Sew them together around the whole edge. Repeat with your remaining two foot pieces so you have two sewn feet total.
- c. To turn the pieces, cut a 1" slit through one layer of the fabric only, near the base. There's also a *cutting guide* on the paper pattern for extra help.

Repeat this same process with your **ARM** pieces (J). This way you'll have 2 arms and 2 feet.

sew desu ne?

| WWW.CHOLYKNIGHT.COM |



30. STUFF THE ARMS & FEET

- Turn all of your **ARMS** (J) and **FEET** (I) right side out through the openings you've cut.
- Stuff the pieces lightly with stuffing, just enough to they puff up a little.
- To make the following steps easier, you may want to stitch the arms and feet closed with a whip stitch.

→ **TO WHIP STITCH:** *With a hand-sewing needle and thread, stitch into the fabric on one side of the cut and come out the other side. Pull at the thread but don't tighten it too much, just enough for the thread to lie flat.*

Stitch up the rest of the cut using this method. The goal is to just keep the stuffing inside so the following steps are easier. So the stitching doesn't have to be perfect. If you have thread leftover, you can use it to attach the foot next.



31. ATTACH THE FEET

- Take one of your **FEET** and align it over the leg seam (from step 20, part C). The cut side should be facing down.
- Sew the foot to the leg using a ladder stitch. Go around the cut you made in step 29. As with the ears, it helps to use big stitches at first to get the placement right, then go around again with neater stitches. Repeat for both feet.

sew desu ne?

| WWW.CHOLYKNIGHT.COM |

- a. Repeat step 31 but for the **ARMS**. Place the cut side of the arm down onto the **BODY FRONT (B)** right between the **INNER LEG (C)** and the **neck seam**. You can have the arms pointing forward (shown here), or pointing up for the shocked Pikachu (shown below).
- b. Ladder stitch the arms to the body front, going around the cut from step 29.



32. ATTACH THE ARMS

→ **PRO TIP:** when going around the 'shoulder' of the arm, stitch into the arm right above the arm seam (from step 29). This will help the arm sink into the body for a more natural shape.



- a. This part is optional, but for a nice finish, you may want to secure the tail upwards so it doesn't flop around as much. Fold up the tail so it meets the back of the neck.
- b. Use a few ladder stitches to sew the tail to the back of the neck. This will hold it enough to look nice, but also give you a good view of the back stripes.

33. SECURE THE TAIL

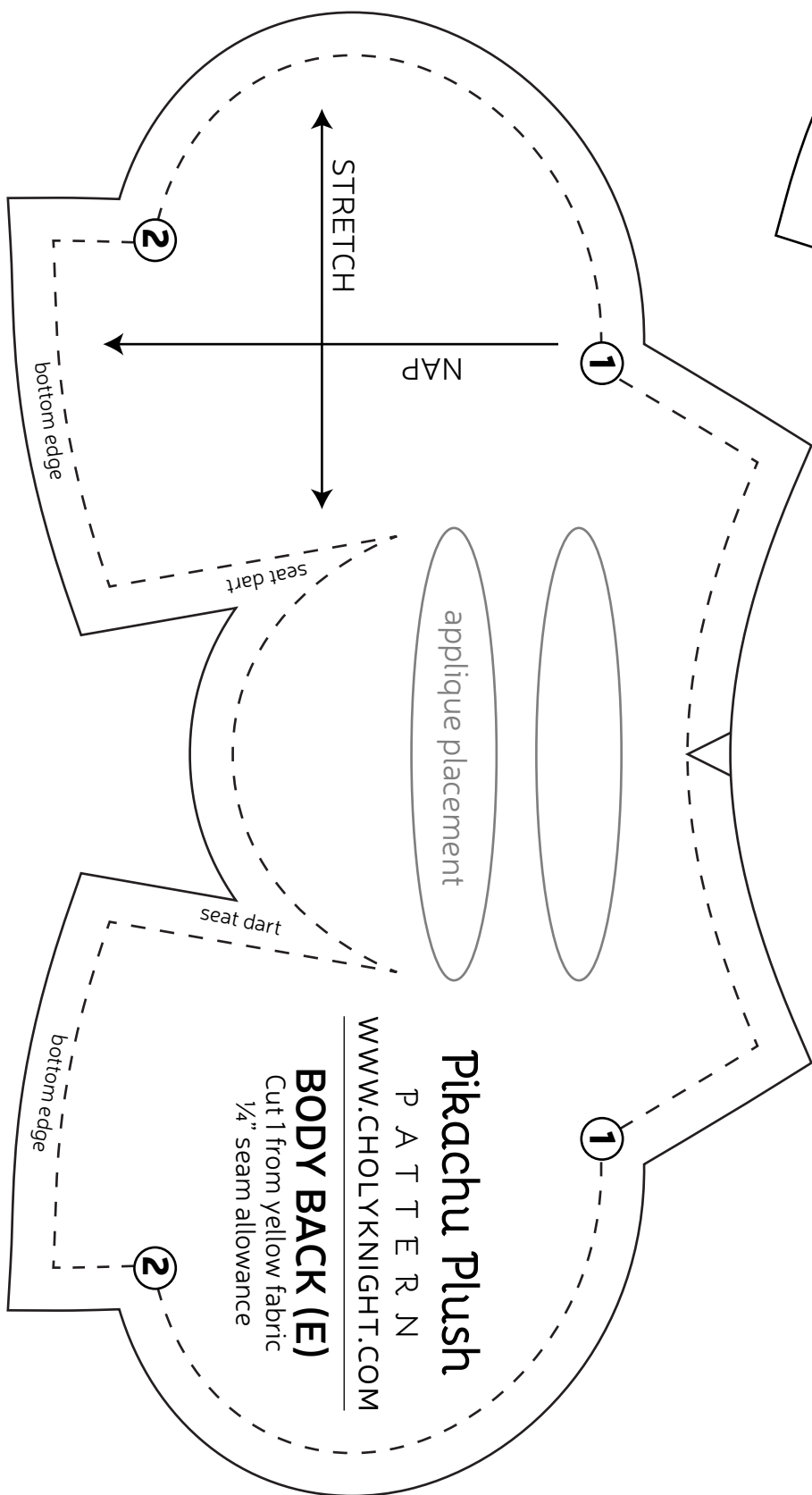
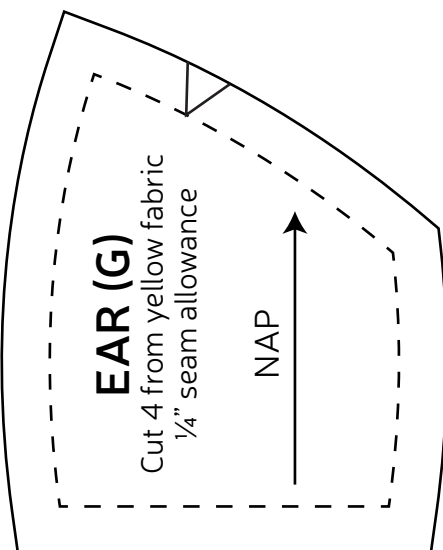
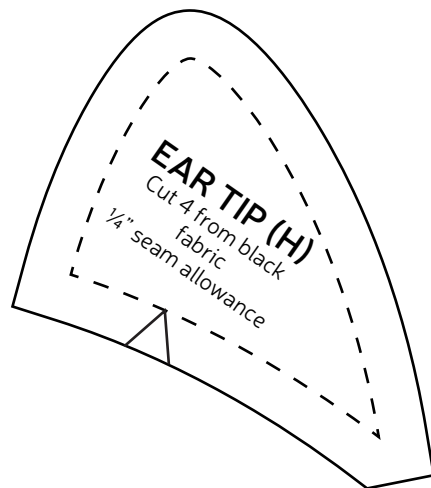


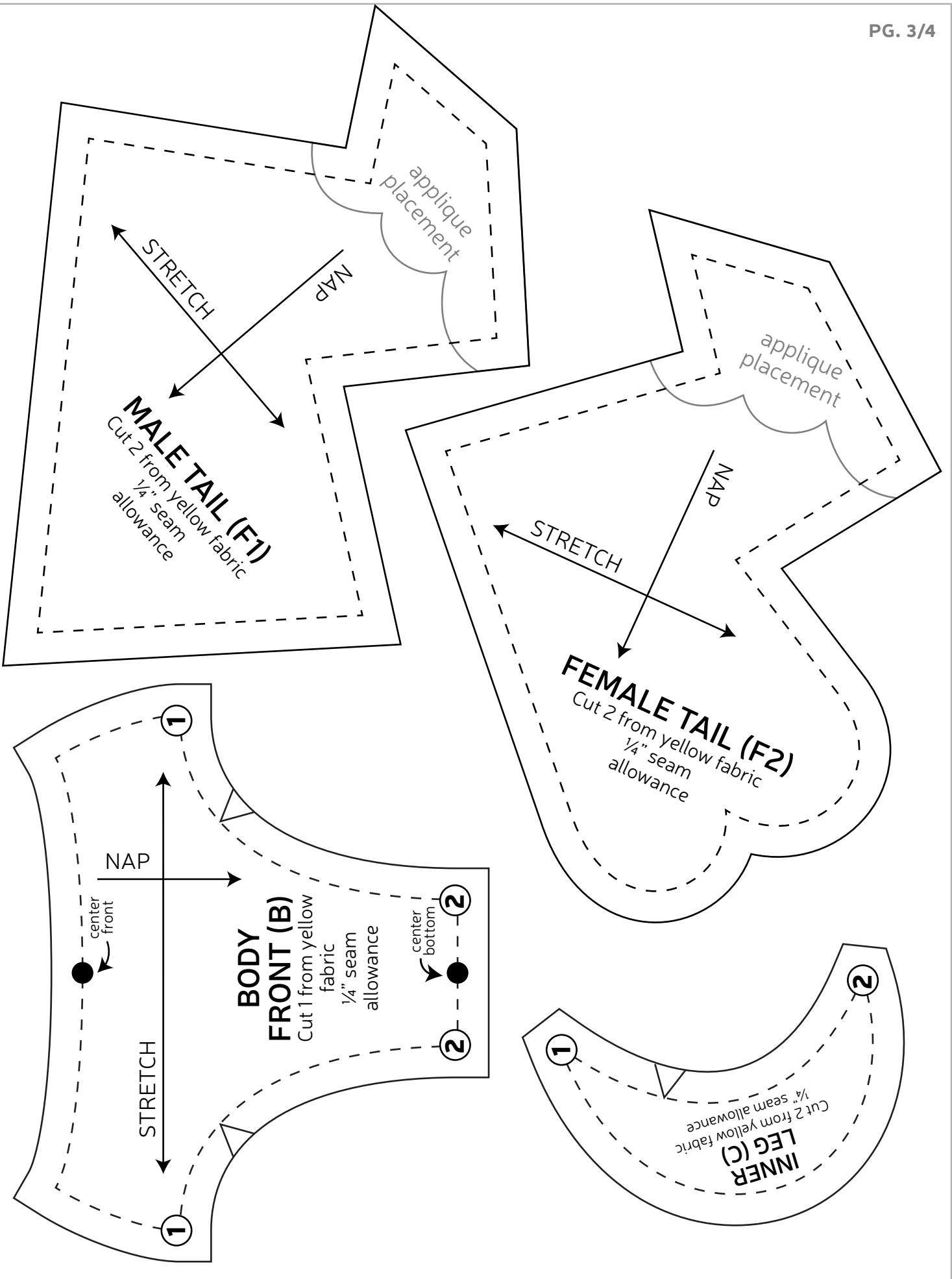
GASP!

FINISHED ALREADY?
 Congrats! This completes your plush! Now go on a Pokemon adventure!

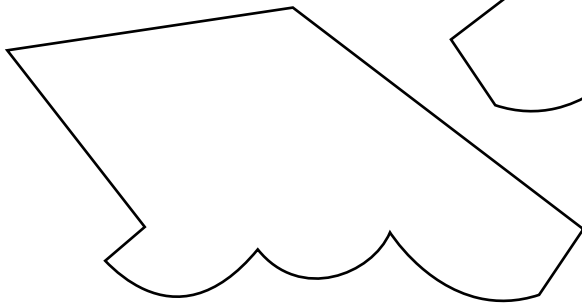
sew desu ne?

| WWW.CHOLYKNIGHT.COM |

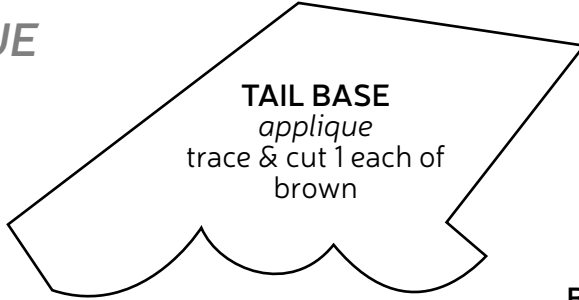




BODY APPLIQUE PIECES



TAIL BASE
applique
trace & cut 1 each of
brown



BACK STRIPES
applique
trace & cut 2 of brown

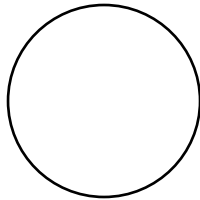


PIECES FOR BOTH FACES

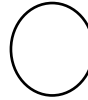
NOSE
applique
trace & cut 1
of black



CHEEK
applique
trace & cut 2
of red



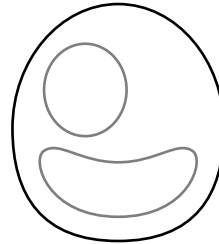
EYE SHINE
applique
trace & cut 2
of white



EYE HIGHLIGHT
applique
trace & cut 2 of
brown



EYE
applique
trace & cut 2
of black

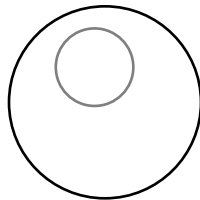


SMILE
applique
trace & cut 1
of black

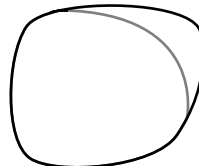


PIECES FOR SHOCKED FACE

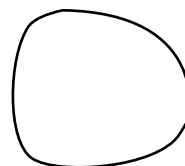
EYE
applique
trace & cut 2
of black



MOUTH
applique
trace & cut 1
of dark pink



TONGUE
applique
trace & cut 1
of pink



EYE SHINE
applique
trace & cut 2
of white

