

# chibi DRAGON & UNICORN



## plush backpack

A FREE SEWING PATTERN BY



# CHIBI DRAGON & UNICORN plush backpack

Long-time fans of my patterns might recognize this backpack plush style. It's actually the first draft of my free chibi backpack pattern, which eventually became a Night & Light Fury duo! Due to popular demand, I've revived this first iteration.

The first version is actually a little smaller than the Toothless version, so be forewarned this tiny backpack is better suited for holding a phone with a few small essentials.

Also unlike Toothless, this version has a tiny snout and big sparkling eyes, for an especially babyish look. The cute horns, spikes, wings, and tail additions have also changed slightly, but still make for a very detailed plush!

It has a zippered pocket in the back of the head, which travels all the way down the body.

The zipper is constructed flat for easier sewing. You also have your choice of quicker non-adjustable straps or more time-consuming adjustable straps depending on how much effort you want to invest in the project.



sew desu ne?

| [WWW.CHOLYKNIGHT.COM](http://WWW.CHOLYKNIGHT.COM) |

## DIFFICULTY:



This plush is a little difficult because it's also a backpack, so it has both plush and bag-making techniques. But if you have a bit of experience with both it will be a good challenge.

Knowledge of zippers helps a lot as well as sewing tiny pieces. Dragons and unicorns have a lot of design elements so that can take some time.

Also, if you're not familiar with bag hardware, it's best to stick with the non-adjustable straps. Doing the adjustable version might bump this project up to a 6 if it's completely new to you.

## MAKES:

**ONE PLUSH BACKPACK:** about 12" tall and 8" wide in the body (not including ears and legs). About 17" tall for full body including ears and legs.

Zippered pocket is 6½" wide and 11" long.

## SKILLS USED:

- Fusible web applique
- Curved sewing
- Basting
- Zippers
- Ladder stitch
- Bag hardware
- Interfacing

## materials & tools:

- ½ yd. of fabric for main body
- ¼ yd. of accent fabric for horns
- ¼ yd. of accent fabric for spikes or hair
- 1/3 yd. or one fat quarter of cotton fabric for pocket lining
- one 7" long (at least) all-purpose zipper
- **OPTIONAL, BUT HIGHLY RECOMMENDED:** 10" x 6" piece of lightweight fusible interfacing
- sewing thread to match main fabric and applique fabrics
- poly-fil stuffing
- basic sewing tools (sewing machine, scissors, iron, needles, pins, fabric marker, seam ripper)
- **FOR NON-ADJUSTABLE STRAPS:** 1½-2 yds. of 1"-1½" wide strapping/webbing material (see page 22 for exact measurements)
- **FOR ADJUSTABLE STRAPS:** 2-3 yds. of 1"-1½" wide strapping/webbing material (see page 23 for exact measurements)
  - two tri-glides matching the width of your webbing
  - two rectangular rings matching the width of your webbing
- **APPLIQUE SUPPLIES:**
  - **DRAGON EYES:** 5" x 5" piece of accent applique fabric (such as cotton, felt, or flannel) for irises, 4" x 4" piece of black applique fabric for pupils, and 3" x 3" piece of white applique fabric for eye shines
  - **UNICORN EYES:** 6" x 6" piece of black applique fabric (such as cotton, felt, or flannel) for eyes and 3" x 3" piece of white applique fabric for eye shines
  - 7" x 7" scrap of light or heavy duty fusible web

sew desu ne?

| WWW.CHOLYKNIGHT.COM |



## WEBBING/STRAPPING:

The name for a thick, ribbon-like material used for backpack straps. It comes in both cotton and polyester/nylon versions and varies between 1"-3" wide.

The polyester/nylon versions come in more colors. It has a large weave so it can fray easily after cutting. It can be purchased by the yard at fabric shops -- usually in the notions, with the elastic, or with the trims. Can also be found by the roll online.



## TRI-GLIDES & RINGS:

Tri-glides are a type of bag hardware used for adjusting the length of straps. They can be found in either plastic or metal varieties. You can spot them by noting the 3 distinctive bars which give them their name.

For use in this project, they also need to be paired with rings, which are a more basic shape for looping strapping material. Rings can be circular, d-shaped, or rectangular (shown here).



## SUGGESTED FABRICS:

Plush, stretchy fabrics such as fleece or minky are suggested. The variations of fleece and minky mentioned to the left would work well, but really any plushy fabric with a bit of stretch on the crosswise grain would be well-suited.

Stretch fabrics like **FLEECE** or **MINKY** will create a more squat, round shape when stuffed.

Non-stretchy fabrics, like **FELT** or **COTTON**, won't stretch when stuffed so the resulting plush will look elongated as shown.

**MINKY**

**VS.**

**FELT**

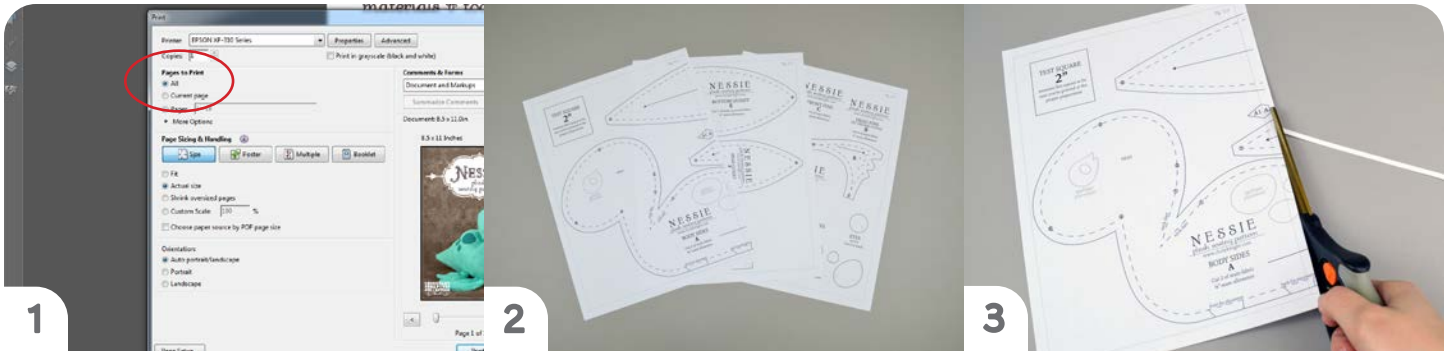


sew desu ne?

| [WWW.CHOLYKNIGHT.COM](http://WWW.CHOLYKNIGHT.COM) |

## printing the pattern:

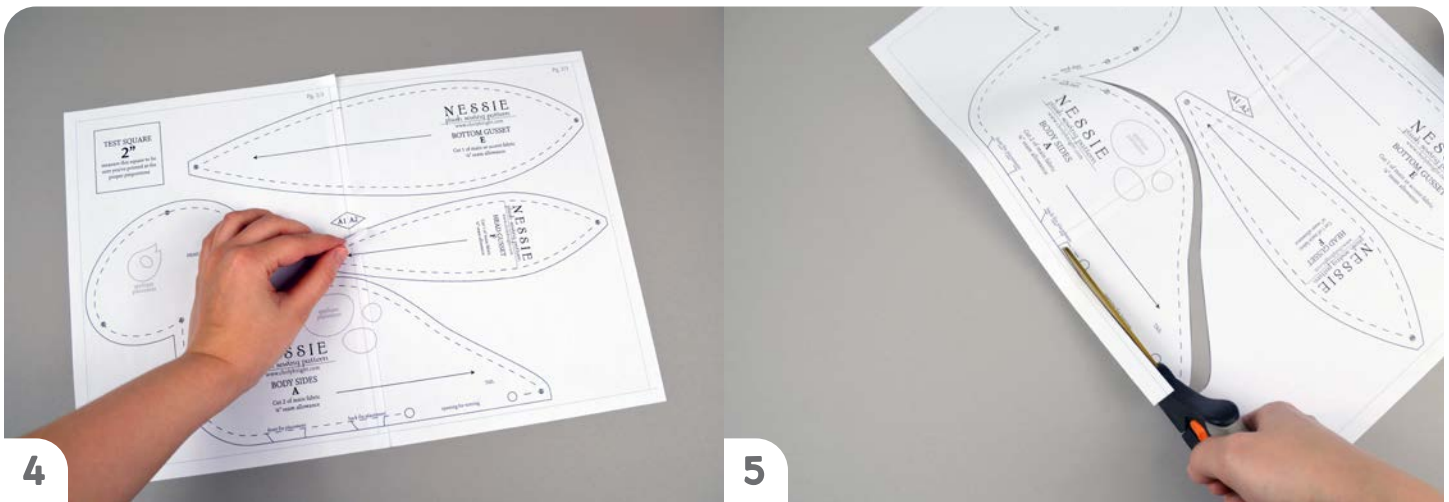
To print the pattern, set your computer to print **PAGES 34-43**. If you're unfamiliar with printing and assembling a .pdf pattern, read the steps below.



1 At the print dialog box, check the box that says print at "Actual Size" or 100%. Any other selection (such as "Fit to page") will distort the pattern so it's slightly larger or smaller and we don't want that.

2 Print the pages needed for the file. You might have one or more. Either way, be sure you have the full collection by noting the page numbers in the corner.

3 It's likely your printer will have a margin that ensures your image doesn't print to the very edge. Assembly will be easier if you trim off this blank margin edge. This will give you pages that overlap slightly during assembly. If you trim across the gray outline boxes, this will give you pages that don't overlap but rather butt against each other.

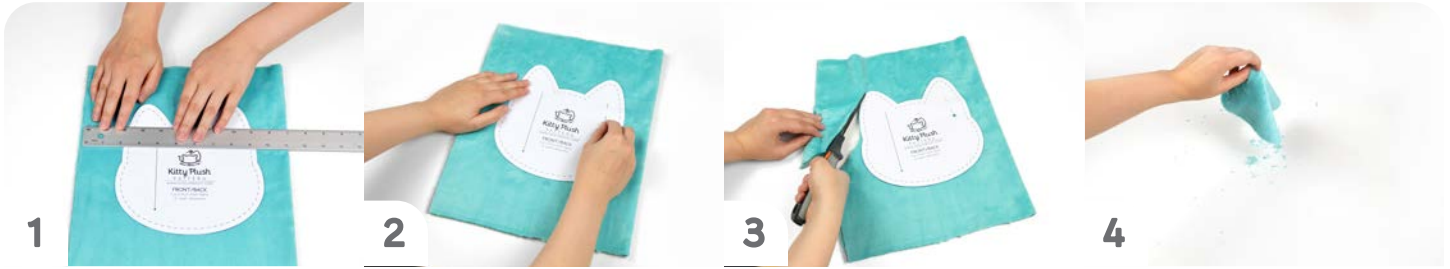


4 To line up the pattern pages, match up the corresponding diamond shapes. Each diamond will have a letter, so it's simply a matter of matching A1 to A2, B3 to B4 and so on. The faint gray lines indicate the border of every page, you should be able to line those up as well. When the diamond goes together, tape it in place.

If you have many pages, it's easier to tape up the pages into rows first. Then tape the rows together into a full block.

5 You can trace the patterns onto a different paper, or you can also just cut them straight from the printer paper -- be sure that each piece is fully taped together along the joins so they don't fall apart when you cut them.

## cutting the fabric:



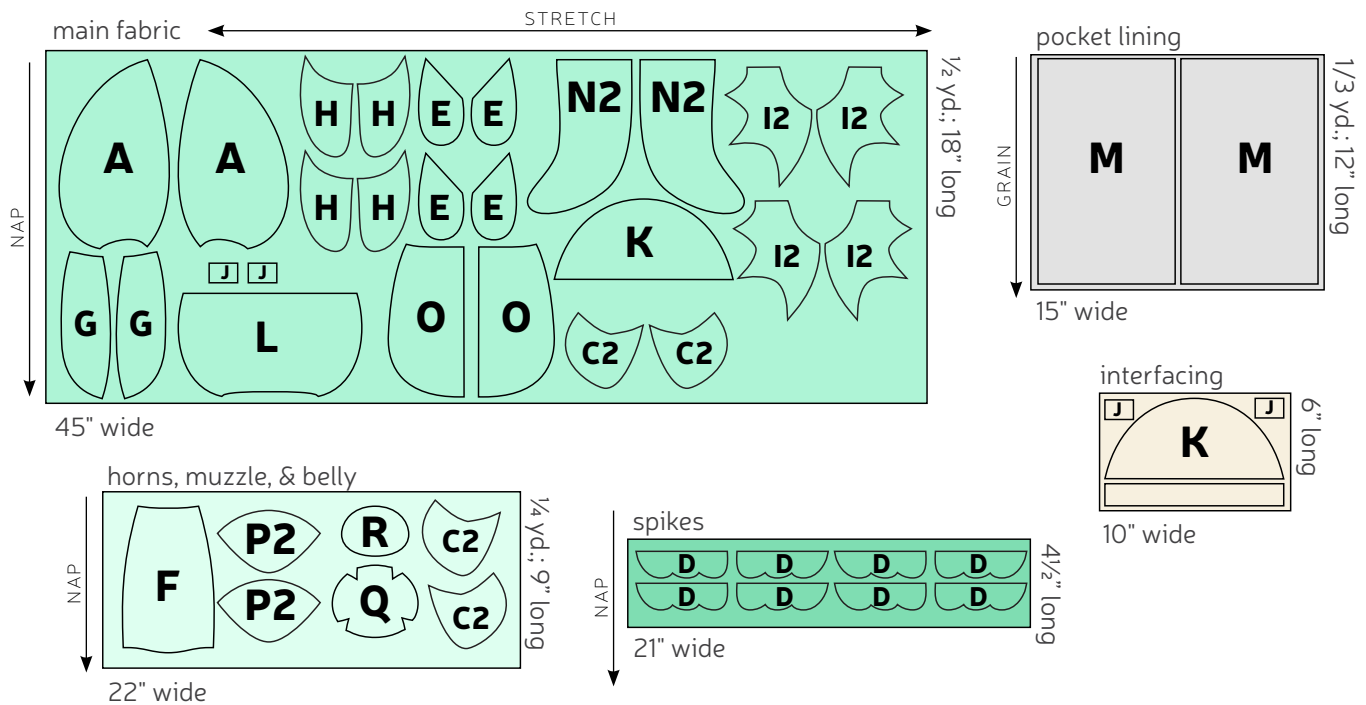
**1** Place pattern on the fabric, and make sure the stretch line matches the stretch of the fabric. The nap line should go in the direction of the fur.

**2** Pin the pattern in place, use pattern weights, or trace the outline of the pattern with a washable marker.

**3** Using the paper as a template, cut out the fabric. Cut the required amount according to the pattern.

**4** For all fur fabrics, shake the excess fuzz away.

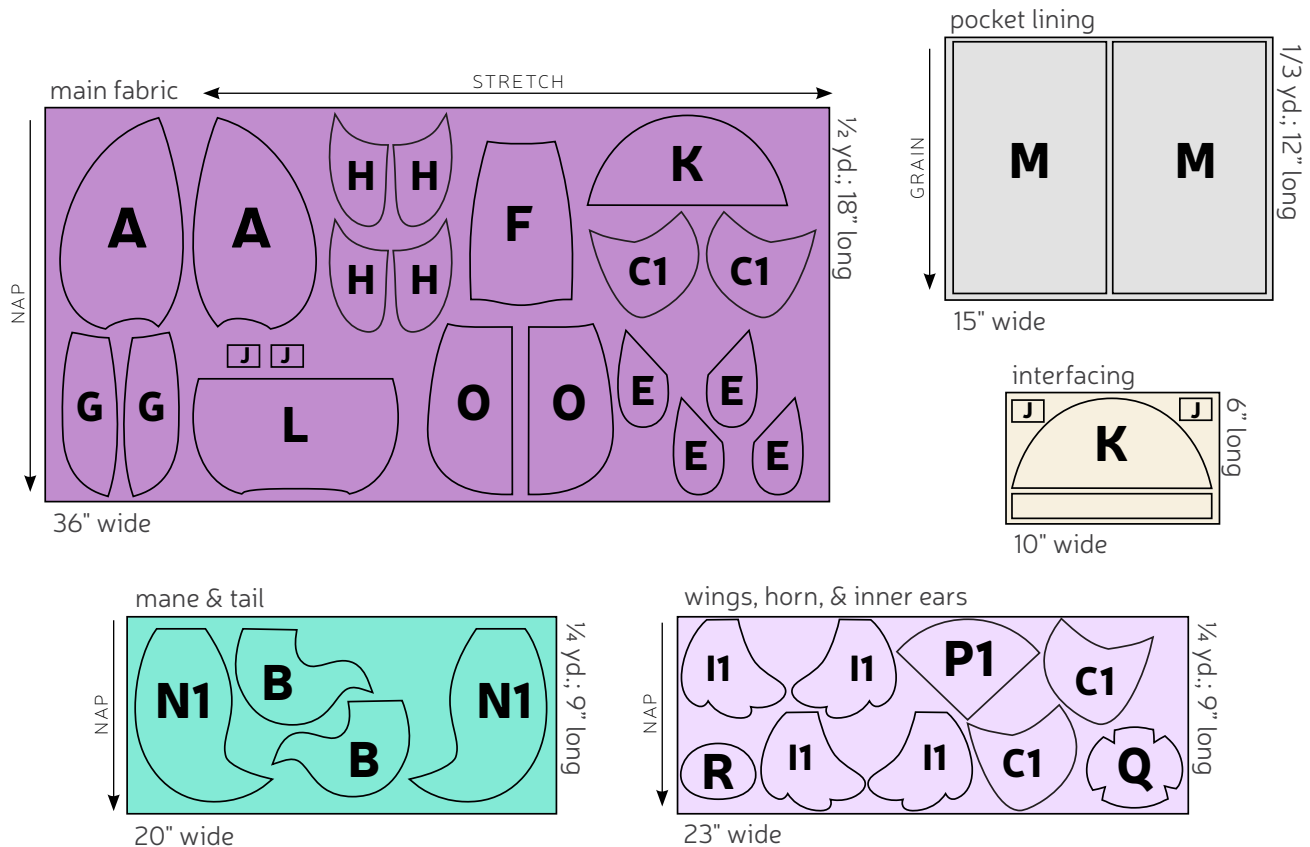
## cutting layout example: DRAGON



sew desu ne?

| [WWW.CHOLYKNIGHT.COM](http://WWW.CHOLYKNIGHT.COM) |

## cutting layout example: UNICORN



### BEFORE YOU BEGIN:

- Briefly read the project instructions so you know what to expect.
- If desired, mark the cut fabric pieces with the markings and symbols from the pattern. Or wait until the applicable step before transferring.
- Note that a 1/4" seam allowance is used throughout the project unless otherwise mentioned.

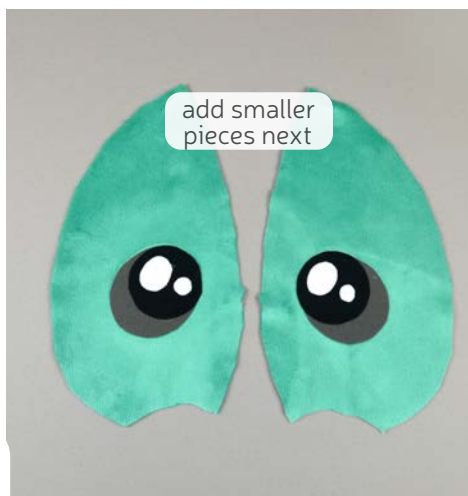
sew desu ne?

| [WWW.CHOLYKNIGHT.COM](http://WWW.CHOLYKNIGHT.COM) |



## 1. PREPARE THE FACE APPLIQUE

- Take your fusible web and trace all of the pieces you want onto the smooth (paper) side. You should have at least two **eyes**, two **eye shines**, and two **nostrils**. The dragon also has two **pupils**. You can add more **eye shines** based on your preference.
- Fuse the bumpy (adhesive) side onto the wrong side of your applique fabric. The **eyes** should go on an accent color or black, the **nostrils** also on black, and the **eye shines** on white.
- Cut out the eyes and arrange them on the **HEAD FRONT (A)** piece. Set your paper pattern on top of the fabric piece (right sides up). Align the **eye** piece on top where the placement markings are. Then carefully pull the paper pattern away while holding the applique piece in place.



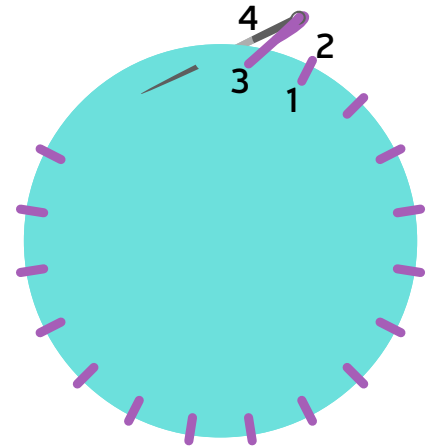
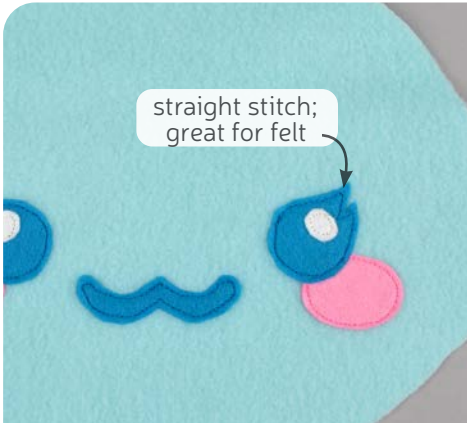
## 2. FUSE THE APPLIQUE

- Fuse the **eyes** in place with your iron. Use a press cloth (such as a scrap piece of cotton), if you have fuzzy or polyester fabric. It will help prevent harming or melting the fabric.
- Next, move onto the **pupil** and **eye shine** pieces. Fuse them the same way as you did the eyes, using the paper pattern and photos as a guide. Repeat with the other eye and the other **HEAD FRONT** piece. If you used heavy duty fusible web, you can keep the pieces fused without sewing, or you can sew them in place a number of ways. I've used a zigzag stitch here.
  - Refer to the next step for some other applique options.
- You can also take this time to add the **nostrils** to the **MUZZLE** piece (Q).

sew desu ne?

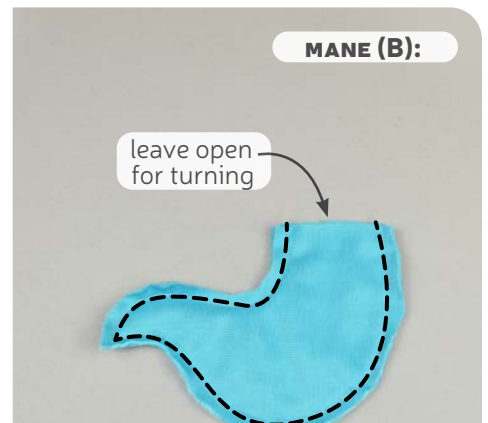
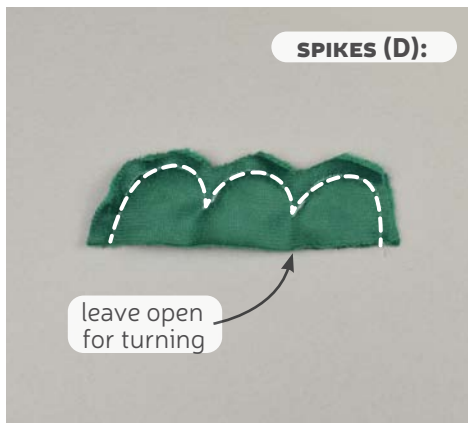
| WWW.CHOLYKNIGHT.COM |





## 2a. OTHER APPLIQUE OPTIONS

- Other good options for applique include a straight stitch, which involves sewing around the edge of the applique pieces with a straight stitch using matching thread -- about 1/8" in from the edge.
- You can also applique by hand; I prefer a whip stitch. Thread a hand-sewing needle with some matching thread and knot it. Bring the thread up from the back of the project; about 1/8" in from the edge of the applique shape. Bring it down perpendicular from the curve, just outside of the applique shape. This completes one stitch.
- For the next stitch, bring the needle back up about 1/8" away from the previous stitch and 1/8" in from the edge just as in the first stitch. Once again, bring it down just outside the applique shape. Continue this way until you've sewn around the shape.



## 3. SEW THE FOREHEAD SPIKES/MANE

- Grab your **MANE** or **SPIKE** pieces (B or D). Take two of them and align them with right sides facing and raw edges matching up.
- Sew them together along the curved edges. Leave the straight edge free for turning it right side out.

sew desu ne?

| WWW.CHOLYKNIGHT.COM |



## 4. TURN THE SPIKES OR BANGS

- a. Trim the excess seam allowance at the outer and inner corners to help reduce bulk and increase flexibility when the piece is turned next.
- b. **FOR THE DRAGON:** Repeat steps 3-4 three more times until you have 4 sets of **SPIKES** total. We'll be using them throughout the project.
- c. **FOR THE UNICORN:** You only need one **MANE** (B).



## 5. BASTE THE SPIKES OR BANGS

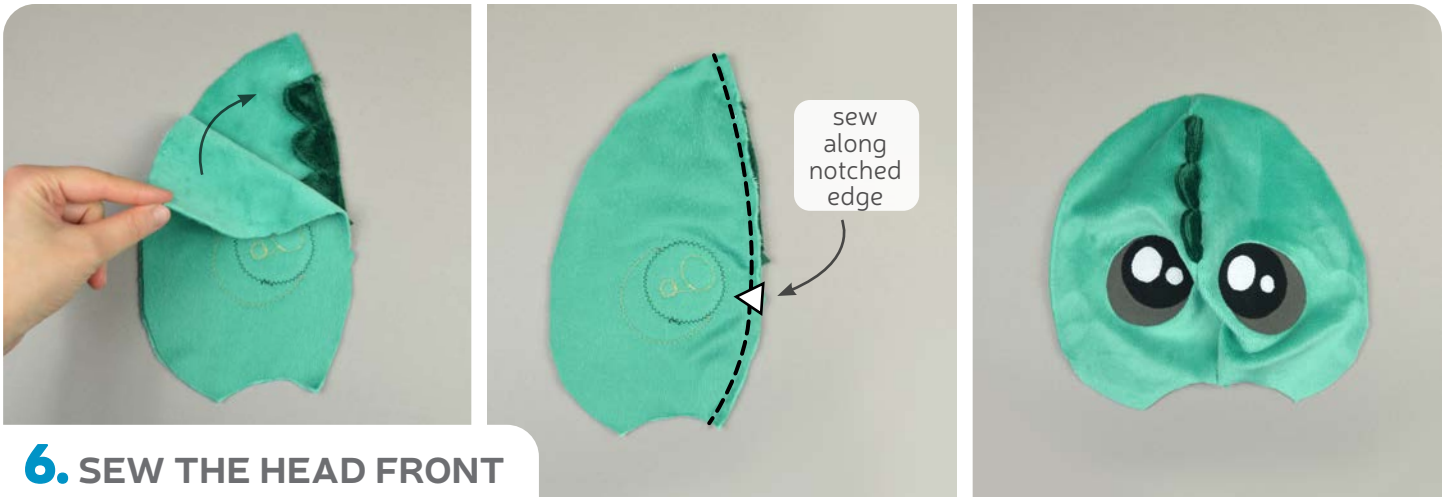
- a. Grab your **MANE** piece or one of your **SPIKES (B or D)**. If you haven't already, locate the *mane or spike placement line* found on the paper pattern for the **HEAD FRONT (A)**. Place one end of the spikes or mane against this line so the raw edges match up.
- b. **FOR THE DRAGON:** baste the spikes to the head front. Note that they're about 1/4" down from the top corner. Make sure the tips of the spikes are pointing upward.
- c. **FOR THE UNICORN:** baste the mane to the head front. Note that the mane should be about 1/4" down from the top corner. Make sure the tip of the mane is pointing downward.

### BASTING:

A form of temporary sewing meant to hold pieces in place. A long stitch length is often used for this reason. The finished result is not meant to be seen and sometimes is even removed later (depending on your project).

sew desu ne?

| WWW.CHOLYKNIGHT.COM |



## 6. SEW THE HEAD FRONT

- a. Grab your remaining **HEAD FRONT** piece (A). Align it over the first with right sides facing and raw edges matching.
- b. Sew the head front pieces together along the *notched edge*.
- c. When complete, the **MANE** or **SPIKES** (B or D) should be secured inside the seam.

- a. Open up your **HEAD FRONT** pieces (A). Grab two more of your **SPIKE** pieces (D). (After this, there should be one left, which we'll use on the **TAIL** later). If you haven't already, locate the *spike placement lines* found on the paper pattern around the outside of the head. Place the open end of your spikes within these placement lines so the edges match up and the spike tips point upward.



## 7. BASTE THE SIDE SPIKES

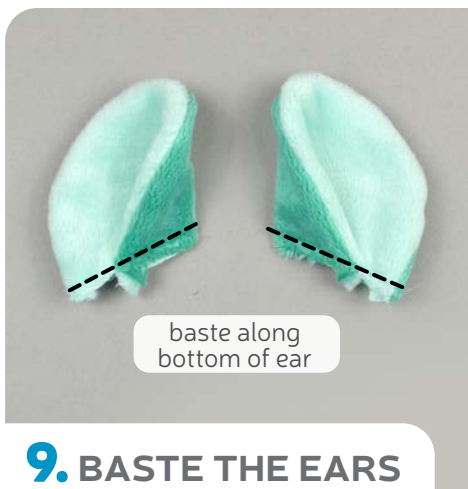
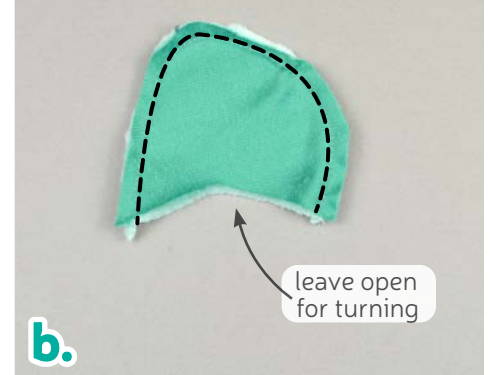
- b. Baste the spikes to the head front within the seam allowance to hold them for future steps.

sew desu ne?

| [WWW.CHOLYKNIGHT.COM](http://WWW.CHOLYKNIGHT.COM) |

- a. Grab your **EAR** pieces (C1/2). Take one from outer ear fabric and one from inner ear fabric. Align them with right sides facing and raw edges matching up.
- b. Sew the ear pieces together along the long curved edge. Leave the straight edges along the bottom free for turning the ears later.
- c. Turn the ears right side out and repeat so you have a matching pair.
- d. Fold the ear along the **fold line** following the guide from the paper pattern. Fold the ear with the inner ear fabrics facing inward. The raw edges of the ear should match up along the bottom.

## 8. SEW THE EARS

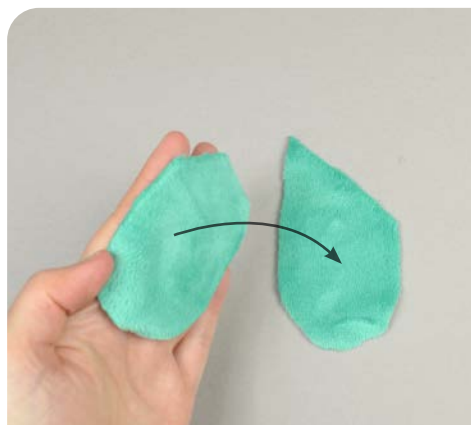


## 9. BASTE THE EARS

- a. Baste the bottom edges of the ear together to hold the fold in place.
- b. If you haven't already, locate the **ear placement lines** found on the paper pattern for the **HEAD FRONT** (A). Transfer the lines to the right side of the fabric. Align your ears within these lines so the ear folds point toward the center.
- c. Flip the ears downward so now the inner ear fabric is facing down. Baste the raw edges of the ear to the head front.

sew desu ne?

| [WWW.CHOLYKNIGHT.COM](http://WWW.CHOLYKNIGHT.COM) |



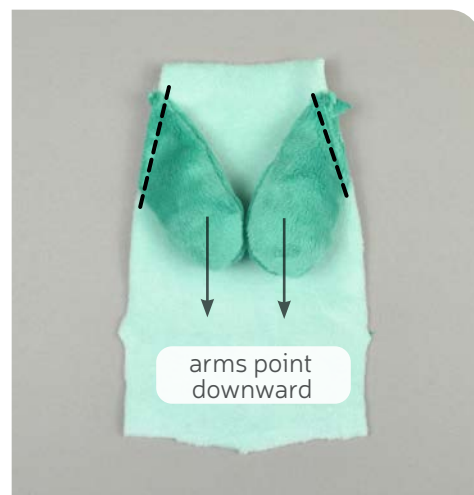
## 10. SEW THE ARMS



- Grab your **ARM** pieces (E). Take two of them and align them with right sides facing and raw edges matching up.
- Sew the arm along the long rounded edge. Leave the slanted edge free for turning it right side out later.
- Turn the arm right side out and repeat with the remaining arm pieces for two arms total.



## 11. BASTE THE ARMS



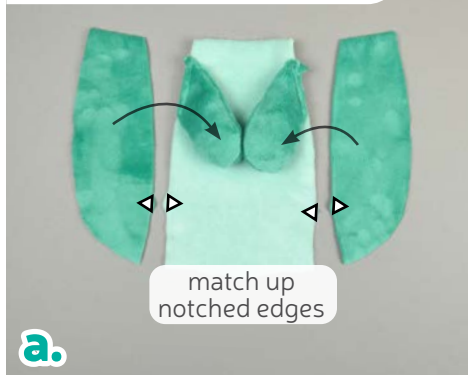
- Stuff the **ARMS** lightly with stuffing. Keep it especially light at the opening, as we'll be sewing it to the belly next.
- Grab your **BELLY** piece (F). If you haven't already, locate the **arm placement lines** found on the paper pattern. Transfer them over to the right side of the fabric. Align the open end of the arm within the lines. Match up the raw edges and have the arm point down.
- Baste both arms to the belly within the seam allowance to hold it securely for the next step.

sew desu ne?

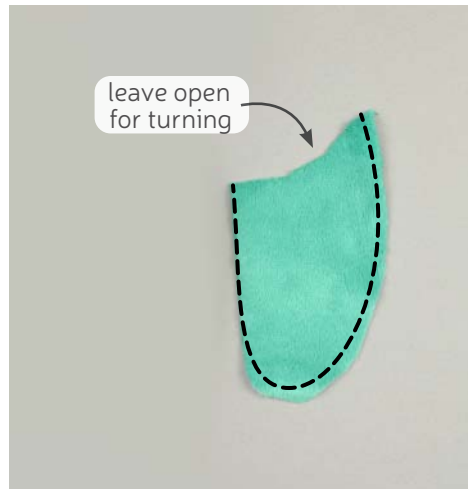
| [WWW.CHOLYKNIGHT.COM](http://WWW.CHOLYKNIGHT.COM) |

- a. Grab your **SIDE** pieces (G). If you haven't already, note the **notch markings** found on both the **BELLY** and side paper patterns. These edges will be sewn together next.
- b. Flip the side so the **notched edge** matches with the belly and right sides are facing. Pin the fabrics together.
- c. Sew the side to the belly along this **notched edge**. Repeat with the other side piece.
- d. When complete, open up the front so far. The arms should be securely sewn between the belly and side.

## 12. SEW THE SIDES



- a. Grab your **LEG** pieces (H). Take two of them and align them with right sides facing and raw edges matching up.
- b. Sew the leg along the long rounded edge. Leave the slanted edge free for turning it right side out later.
- c. Turn the leg right side out and repeat with the remaining leg pieces for two legs total.



sew desu ne?

| [WWW.CHOLYKNIGHT.COM](http://WWW.CHOLYKNIGHT.COM) |



## 14. BASTE THE LEGS

- Stuff the **LEGS** lightly with stuffing. Keep it especially light at the opening, as we'll be sewing it to the front next.
- Grab your front piece so far. If you haven't already, locate the **leg placement lines** found on the paper pattern for both the **BELLY** (F) and the **SIDE** (G). Transfer them over to the right side of the fabric. Align the open end of the leg within the lines. They should be about centered over the belly seam. Flip the legs inward so the open edges match up with the raw edges of the body.
- Baste the leg to the body within the seam allowance to hold it securely for the next step. Note that the legs point inward when basted so they'll point straight down when flipped later.



## 15. SEW THE WINGS

- Grab your **WING** pieces (11/2). Take two of them and align them with right sides facing and raw edges matching up.
- Sew them together along the long pointed edge. Leave the short straight edge free for turning the wing right side out later.
- Trim the excess seam allowance near the tight corners and curves. This will decrease bulk and increase flexibility when the wing is turned later.

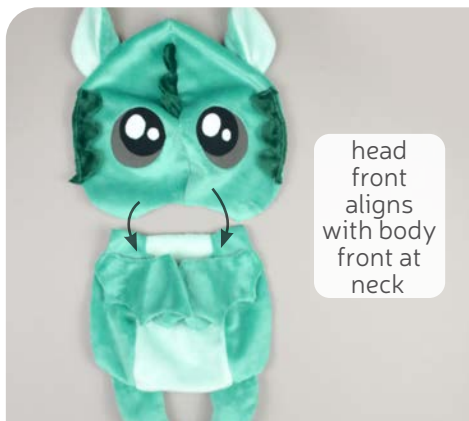
sew desu ne?

| WWW.CHOLYKNIGHT.COM |



## 16. BASTE THE WINGS

- Turn the wings right side out through the opening you left.
- Grab your body pieces so far. If you haven't already, locate the **wing placement lines** found on the paper pattern for the **SIDE (G)**. Align the open end of the wing within these lines so the raw edges match up.
- Flip the wings to the inside and baste the edges within the seam allowance to hold it for future steps.



## 17. SEW THE NECK

- Grab your **HEAD FRONT (A)** and body piece so far. The curved edges at the bottom of the head and the top of the body will be sewn together next as the neck.
- Flip the head so the neck edge lines up with the body. Pin the fabrics together.
- Sew the head to the body along the neck edge.  
**CONGRATS!** You just completed the front half of the backpack. Next up is the back half, so now would be a great time for a break.

sew desu ne?

| [WWW.CHOLYKNIGHT.COM](http://WWW.CHOLYKNIGHT.COM) |





## 18. FUSE THE INTERFACING

- a. If you have fusible interfacing, take this opportunity to fuse it to your fabrics now. Follow the manufacturer's instructions to secure it to the wrong side of your fabric. First, fuse it to the wrong side of your **HEAD BACK (TOP)** piece (K).
- b. Cut out a 2" strip of the interfacing and fuse it against the straight edge of your **HEAD BACK (BOTTOM)** piece (L).
- c. And lastly fuse two bits to the back of your **ZIPPER TAB** pieces (J).



## 19. SEW THE ZIPPER TABS

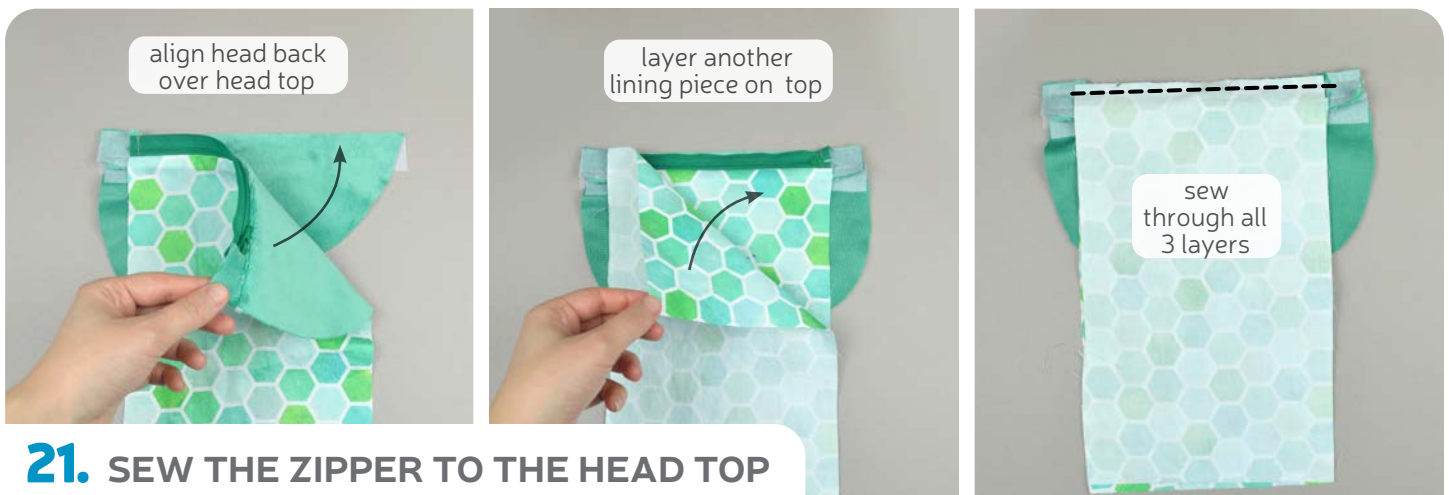
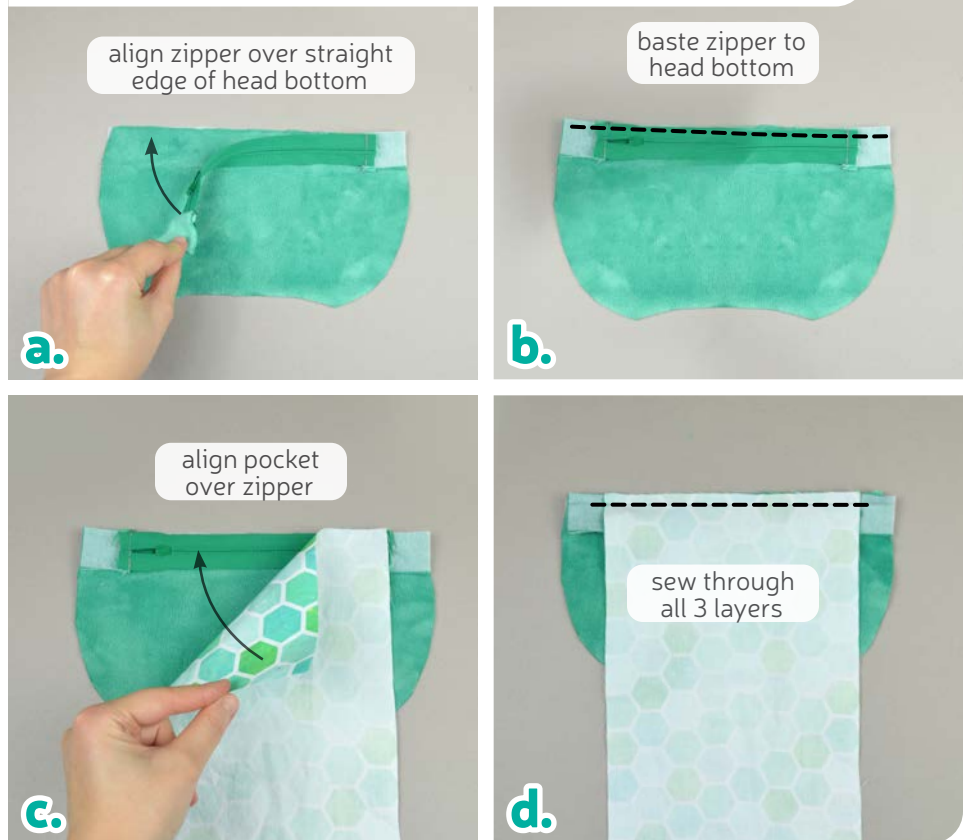
- a. If you have a longer zipper, take this opportunity to trim the ends of it so it matches the short side of your **POUCH POCKET** (M). Make sure not to accidentally cut off the zipper slider.
- b. Take one of your **ZIPPER TABS** (J) and align the short end with the cut end of your zipper with right sides facing.
- c. Sew the tab to the zipper along this edge. Sew very slowly and carefully over the zipper teeth (use just the hand wheel if necessary to avoid a broken or bent needle). Repeat with the other zipper tab on the other side of the zipper.  
When complete, press the tabs away from the zipper.

sew desu ne?

| [WWW.CHOLYKNIGHT.COM](http://WWW.CHOLYKNIGHT.COM) |

- a. Grab your **HEAD BACK BOTTOM** piece (L) and your zipper with **TABS** (J) attached. Align the zipper (right side down) over the straight edge of the head bottom so the edge of the tape matches up and the right sides are facing.
- b. Baste the zipper to the head bottom within the seam allowance to hold it securely for the next step.
- c. Align the **POUCH POCKET** (M) over the zipper tape edge as well. Center it over the zipper.
- d. Sew the pocket to the zipper with a regular  $\frac{1}{4}$ " seam allowance. Sew through all three layers to secure the zipper inside. Press the pocket away from the zipper.

## 20. SEW THE ZIPPER TO THE HEAD BOTTOM



## 21. SEW THE ZIPPER TO THE HEAD TOP

- a. Grab your **HEAD BACK TOP** piece (K). Take your **HEAD BACK BOTTOM** (with pocket attached) and align the other side of the zipper over the straight edge of the head top. Just like with the bottom, line up the edges with the right sides of the zipper and backpack fabrics facing. If desired, baste the zipper in place like in step 20.
- b. Take your remaining **POUCH POCKET** piece (M) and align a short end along the zipper edge, just like before in step 19. The right sides of the pocket fabric should be facing.
- c. Sew through all three layers of fabric, just like at the end of step 20.

sew desu ne?

| [WWW.CHOLYKNIGHT.COM](http://WWW.CHOLYKNIGHT.COM) |

- a. Grab the raw edges of both of your **POUCH POCKET** pieces (M) and match them up with right sides facing.
- b. Sew the pouch pocket pieces together along the sides and bottom. Get as close as possible to the zipper without actually sewing over it. Back stitch several times near the zipper for extra strength. This completes the head back!



→ **Note:** you could leave an opening in the pouch here for both turning and stuffing the backpack. However, I find it difficult to get the stuffing smooth and even this way, and prefer to leave an opening in the back of the neck (step 27) for more control. So it's your choice.

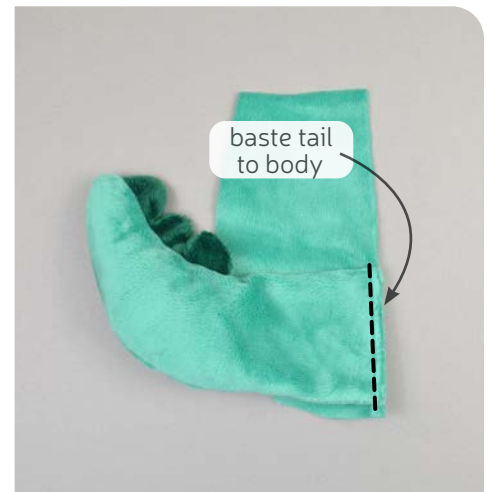
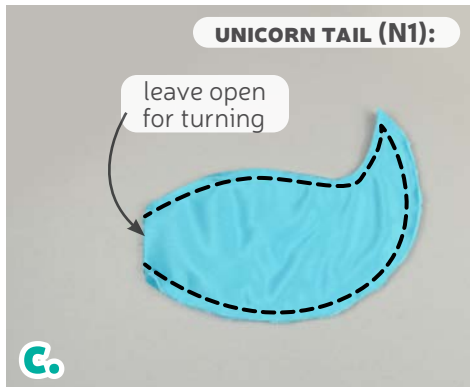
- a. Grab your last **SPIKE** piece (D). If you haven't already, locate the **spike placement lines** found on the paper pattern for the **DRAGON TAIL** (N2). Transfer them over to the right side of the fabric. Align the open end of the spike within these lines so the edges match up.
- b. Baste the spike to the tail within the seam allowance to hold it securely for the next step.



sew desu ne?

| WWW.CHOLYKNIGHT.COM |

- a. Grab your two **TAIL** pieces (N1/2). Take them both and align them with right sides facing and raw edges aligning.
- b. Sew the tail pieces together along the long curved edge. Leave the straight edge free for turning the tail later.
- c. Clip the seam allowances at the inner corners and curves around the tail piece.
- d. Turn the tail right side out through the opening at the base of the tail.



**25. BASTE THE TAIL**

- a. Stuff the **TAIL** lightly with stuffing. Don't go too full here, as the tail will be against your back when wearing the backpack and you don't want it to be too bulky. Keep most of the stuffing in the tip.
- b. Grab one of your **BODY BACK** pieces (O). If you haven't already, locate the **tail placement lines** found on the paper pattern. Transfer them over to the right side of the fabric. Align the open end of the **TAIL** (N1/2) between the **placement lines**. The tip of the tail should point up.
- c. Baste the tail to the body back to hold it securely for the next step.

sew desu ne?

| WWW.CHOLYKNIGHT.COM |



## 26. SEW THE BACK

- Grab your remaining **BODY BACK** piece (O). Layer it over the first so right sides are facing and the raw edges match up.
- Sew the body back pieces together along the straight edge (with the tail attached).
- Open up the back pieces when complete. The tail should be fully secured inside the seam.



## 27. SEW THE BACK NECK

- Grab your **HEAD BACK** (K-L) and body **BACK** piece so far. The curved edges at the bottom of the head and the top of the body will be sewn together next as the neck.
- Flip the head so the neck edge lines up with the body. Pin the fabrics together.
- If you haven't already, locate the **opening for turning markings** found on the paper pattern for the **HEAD BACK BOTTOM** (L). Transfer them over to the wrong side of the fabric. Sew the head to the body along the neck edge, but leave an opening where you marked. Open up the pieces when complete. Next up is to add the straps!

sew desu ne?

| [WWW.CHOLYKNIGHT.COM](http://WWW.CHOLYKNIGHT.COM) |

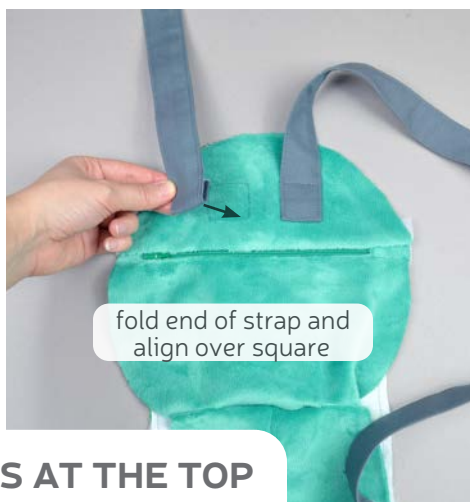
## STEPS 27-29: NON-ADJUSTABLE STRAPS

The next 3 steps go over how to make non-adjustable straps. It's a lot easier and faster than the adjustable version. But if you'd like to try making adjustable straps, skip ahead to step 31.

### 28. CUT THE STRAPS

- Grab your webbing/strapping material. Cut two straps from it using the chart as a guide for the length.
- Since the straps are not adjustable, it's difficult to predict the exact size, so it's highly recommended that you test the fit before moving past step 30.
- If you or the recipient are larger than the average person of the suggested height, consider going a size up.

APPROXIMATE SIZE	HEIGHT	STRAP LENGTH (CUT 2)
CHILD	50"-60"	26"
TEENAGER/ SMALL ADULT	60"-64"	30"
MEDIUM ADULT	65"-69"	34"
LARGE ADULT	70"-75"	38"



### 29. ATTACH THE STRAPS AT THE TOP

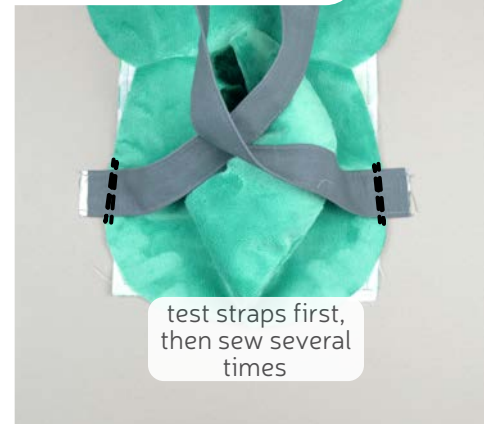
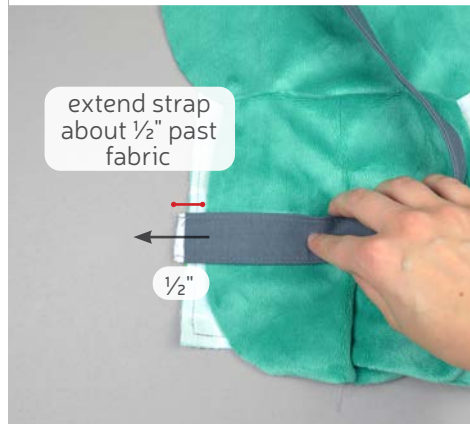
- If you haven't already, locate the **strap placement squares** found on the paper pattern for the **HEAD BACK TOP (K)**. Transfer them over to the right side of the fabric. An easy way to do this is to cut out the squares and trace the outlines using a fabric marker.
- Grab one end of one of your strap pieces and fold it under by about 1"-1½". Take this folded end and layer it over the **placement square** with the fold pointing downward.
- Sew over the folded edge in a square shape to secure it in place. Repeat with the other strap piece and the other placement square.

sew desu ne?

| WWW.CHOLYKNIGHT.COM |

- a. If you haven't already, locate the **strap placement lines** found on the **BODY BACK** paper pattern (O). Transfer them over to the right side of the fabric.  
Take the other end of one of your strap pieces and align it between the **placement lines**. Extend it beyond the body fabric by about  $\frac{1}{2}$ " for extra strength and security.

### 30. ATTACH THE STRAPS AT THE BOTTOM



- b. Baste the strap to the body fabric within the seam allowance. Repeat with the other strap on the other side for two complete straps. If desired, take this time to test the fit of your straps. You can undo the basting stitches at the bottom of the strap to make them shorter if desired.  
If everything fits all right, go back and stitch over the straps several more times so the hold is very strong and secure.  
Skip ahead to step 38 to continue finishing the backpack.

## STEPS 31-37: ADJUSTABLE STRAPS

The next 7 steps go over how to make adjustable straps. This version is more difficult and involved than non-adjustable straps, but in the end the backpack is more adaptable.

### 31. CUT THE STRAPS

- a. Grab your webbing/strapping material. Cut two lower loops and two upper straps following the measurement for your size.  
b. Since the straps are adjustable, there's some leeway in the sizing, but you can always shorten the straps later.  
c. If you or the recipient are larger than the average person of the suggested height, consider going a size up.

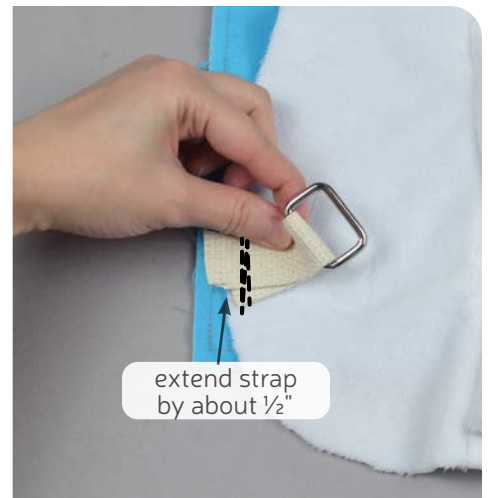
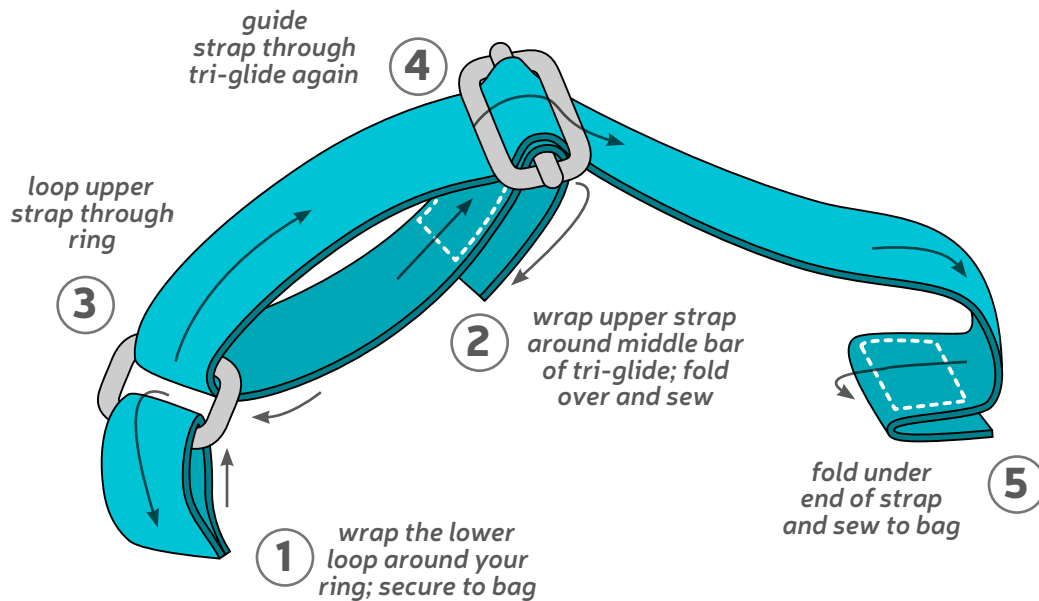
APPROXIMATE SIZE	HEIGHT	LOWER LOOP (CUT 2)	UPPER STRAP (CUT 2)
CHILD	50"-60"	4"	29"
TEENAGER/ SMALL ADULT	60"-64"	4"	35"
MEDIUM ADULT	65"-69"	4"	39"
LARGE ADULT	70"-75"	4"	43"

sew desu ne?

| WWW.CHOLYKNIGHT.COM |

## strap assembly: at-a-glance

- a. The next 6 steps go over how to assemble the straps into your strap hardware. This illustration shows an at-a-glance view of what we'll be doing in more detail next.



- Grab one of your **lower loop** strap pieces and your **rectangular ring**.
- Wrap the loop around the ring and bring the short ends of the loop together.
- If you haven't already, locate the **strap placement lines** found on the paper pattern for the **BODY BACK** (O). Transfer them over to the right side of the fabric. Place the ends of the lower loop between these **placement lines**. Make the strap extend about  $\frac{1}{2}$ " beyond the fabric for extra stability. Baste the strap to the fabric within the seam allowance. Stitch over the area several times for a very strong hold.

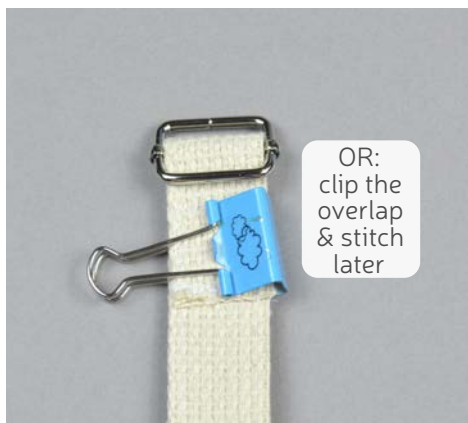
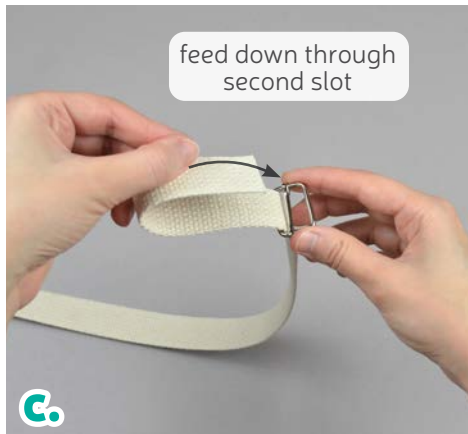
sew desu ne?

| [WWW.CHOLYKNIGHT.COM](http://WWW.CHOLYKNIGHT.COM) |



- a. Grab one of your **upper strap** pieces and your **tri-glide**.
- b. Take one end of your upper strap and insert it into one of the slots of the tri-glide from the bottom up.
- c. Feed the strap into the remaining slot of the tri-glide from the top down.
- d. Fold over the strap so it overlaps by about 1½".

### 33. LOOP THE MIDDLE BAR



### 34. SECURE THE MIDDLE BAR

- a. Stitch the **STRAP** where it overlaps with itself in a square around the edges.
- b. **ALTERNATIVELY:** you could also clip the strap here to temporarily hold it in case you want to try on the backpack first and stitch it later.
- c. If you haven't already, locate the **strap placement squares** found on the paper pattern for the **HEAD BACK TOP (K)**. Transfer them over to the right side of the fabric. An easy way to do this is to cut out the squares and trace the outlines using a fabric marker.

sew desu ne?

| WWW.CHOLYKNIGHT.COM |

**a.** Take your back piece so far and place it on your work table with right sides facing up. Place your **upper strap** on top with the folded end facing down.

**b.** Grab the other end of your strap and feed it through the other side of your **rectangular ring**.

**c.** Take that same end and feed it through one slot of the tri-glide again, from the bottom up.

→ **Push the other end of the strap out of the way to make room.**

**d.** Feed it through the remaining slot of the tri-glide, from the top down.

### 35. LOOP THE UPPER STRAP



### 36. ALIGN THE UPPER STRAP

**a.** Pull the **upper strap** through the tri-glide and it should look as shown. All the looping is complete!

**b.** Fold over the end of the strap by about 1½".

**c.** Flip the strap so the folded end is facing down onto the **placement square** you marked before.

sew desu ne?

| WWW.CHOLYKNIGHT.COM |



- a. Stitch the folded end of the strap to the **placement square** in a rectangle.
- b. Repeat steps 31-37 with your remaining **strap, ring,** and **tri-glide** pieces so the other side of the backpack now also has a strap.  
Now would be a good time to do a test fit of the strap length if that's a concern.

### 37. SECURE THE UPPER STRAP

- a. Grab your body front and body back so far. Next we'll be sewing this front and back together, but first make sure all the extra bits are tucked inside -- the **ARMS, LEGS, WINGS, SPIKES, STRAPS,** and **TAIL.**

Line up the front to the back, matching the seams at the neck. The **notch** on the **HEAD BACK TOP (K)** matches with the **seam** on the **HEAD FRONT (A)**. The **notch** on the **BELLY (F)** matches with the **seam** on the **BODY BACK (O)**

- b. Sew the body front to the back all the way around.
- c. Before turning, make small clips into the seam allowance at the corners of the neck.
- d. Turn the body right side out.

### 38. SEW THE BODY FRONT TO THE BACK



sew desu ne?

| WWW.CHOLYKNIGHT.COM |



pull out  
lining for  
easier  
stuffing



stuff  
body; focus  
on edges



stuff  
head; focus  
on edges

### 39. STUFF THE BODY

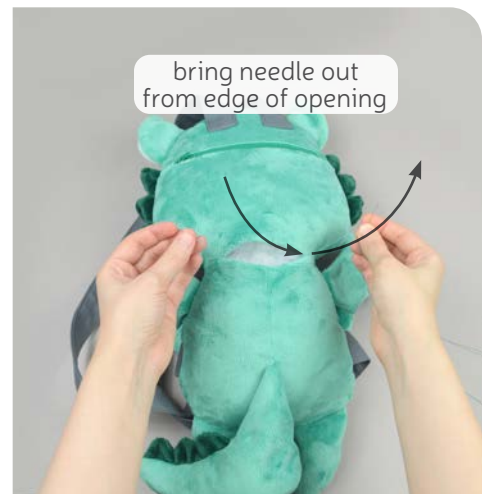
- For best results while stuffing, pull the **LINING** out so it's not inside the body.
- Stuff the bottom half of the body lightly with stuffing. Keep most of the stuffing near the edges so the finished plush can develop its shape. Keep the stuffing light in the middle since that's where your belongings will go.
- Flip the plush over and stuff the head next. Once again, focus most of the stuffing on the outer edges of the plush so the head gets defined.



shove  
lining  
back into  
body



fill any  
extra areas



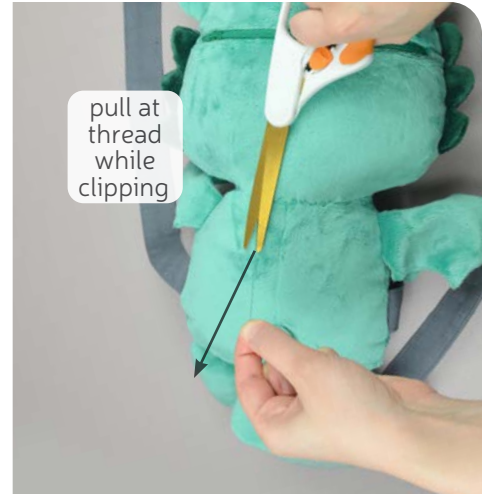
bring needle out  
from edge of opening

### 40. ADJUST THE POCKET

- Once the stuffing is to your satisfaction, shove the **LINING** back inside the body and smooth it out with your hands.
- Double check any areas that need more stuffing before closing up the plush. The back of the body and the head can sometimes look a little hollow. The 'cheek' area just above the neck typically needs a lot to look full too.
- Make sure the seam allowances in the opening are tucked inside and prepare to ladder stitch it closed. Thread a hand-sewing needle and knot it at the end. Insert the needle from the inside of the opening and out of the plush near one edge of the opening. This will leave the knot inside the plush.

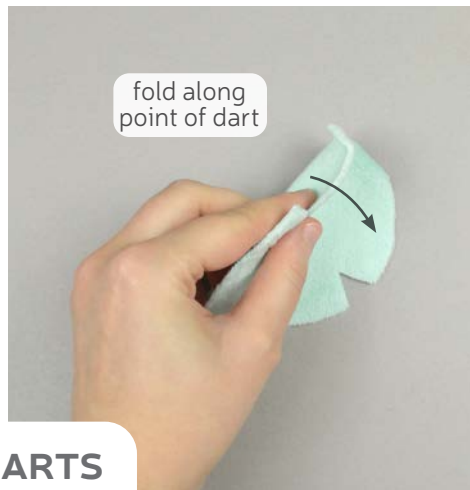
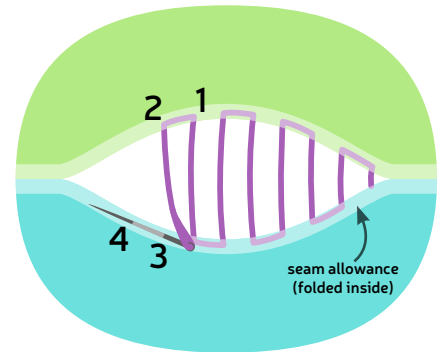
sew desu ne?

| WWW.CHOLYKNIGHT.COM |



## 41. CLOSE UP THE OPENING

- Close up the back of the head with a ladder stitch. Take a 1/8" stitch into the fold of one side of the opening, then go across and take another. (See illustration at the right). Keep going down the opening until you reach the end.
- When you're finished, stitch a knot into the end of the seam. Then insert the needle near the finished knot and out of the plush about 1-2" away.
- Pull the thread through and hold it taut while snipping the thread. The excess thread should sink back inside the plush -- all hidden!



## 42. SEW THE MUZZLE DARTS

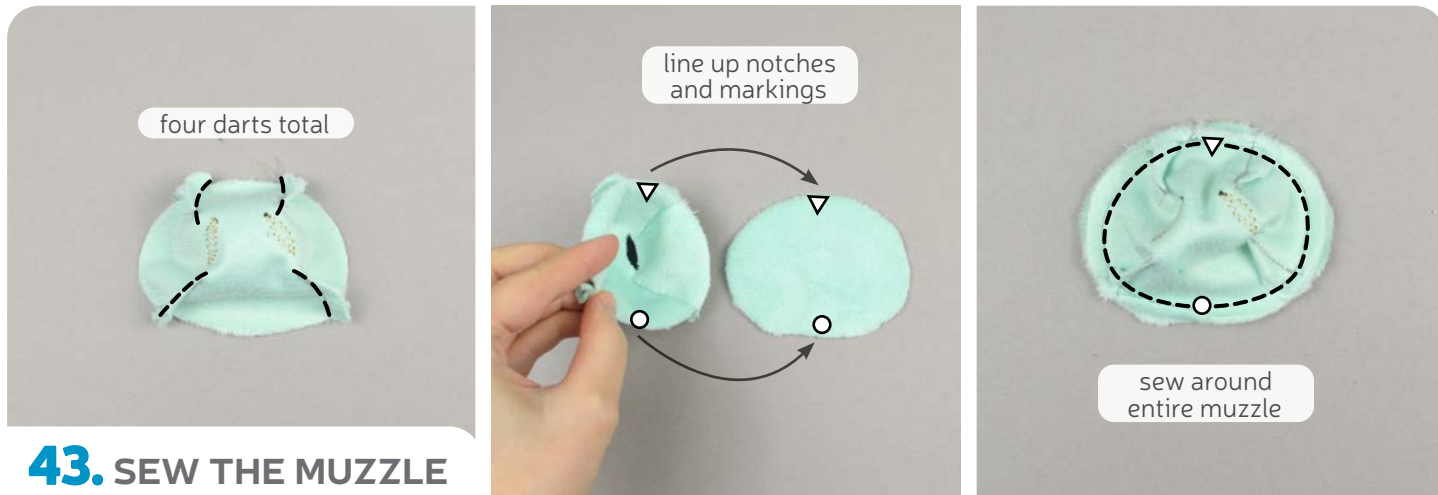
- Grab your **MUZZLE** piece (Q).
- Note all the small wedges found around the shape. These are **darts**. To sew them, begin by matching up the short slanted edges with right sides facing.
- Sew from the opening of the **dart** down to the point. Try to blend your seam into the fold of the fabric for a smooth transition and a rounder finish.

### DARTS:

A wedge-shaped gap found in a pattern. When sewn in fabric, it creates a tuck in the fabric and develops a 3D shape. The diagonal sides of the wedge are the **LEGS**; these are matched up and sewn to the **POINT** of the dart.

sew desu ne?

| WWW.CHOLYKNIGHT.COM |



## 43. SEW THE MUZZLE

- Repeat step 42 three more times for four darts total around the muzzle.
- Grab your **MUZZLE BASE** piece (R). Take your muzzle so far and align it around the muzzle base. For help with alignment, there is a **notch marking** at the top and a **circle marking** at the bottom of both pieces. Pin the fabrics together.
- Sew the muzzle to the base all around the shape.



## 44. STUFF THE MUZZLE

- To turn the **MUZZLE** right side out, make a small clip in the **MUZZLE BASE** fabric only (R).
- Turn the muzzle right side out through the opening you've cut.
- Stuff the muzzle semi-firmly with stuffing, just enough so it takes shape and there are no wrinkles in the fabric.

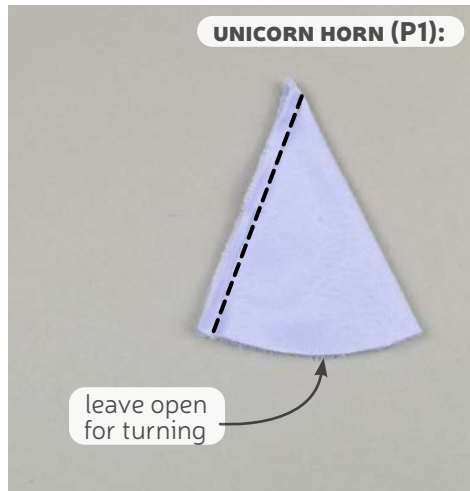
sew desu ne?

| [WWW.CHOLYKNIGHT.COM](http://WWW.CHOLYKNIGHT.COM) |

- a. Place the **MUZZLE** cut side down on the face of your dragon or unicorn. Center the muzzle between the eyes so it just barely covers the corners of the eyes.
- b. Attach the muzzle to the front of your dragon or unicorn around the base of the muzzle. Use a ladder stitch as shown in step 41.



## 45. ATTACH THE MUZZLE



## 46. SEW THE HORNS

- a. Grab your **HORN** pieces (P1/2). Fold the shape in half with right sides facing so the raw edges match up and it makes an even skinnier triangle shape.
- b. Sew the horn along the straight edge and leave the curved edge along the bottom open for turning the horn later.

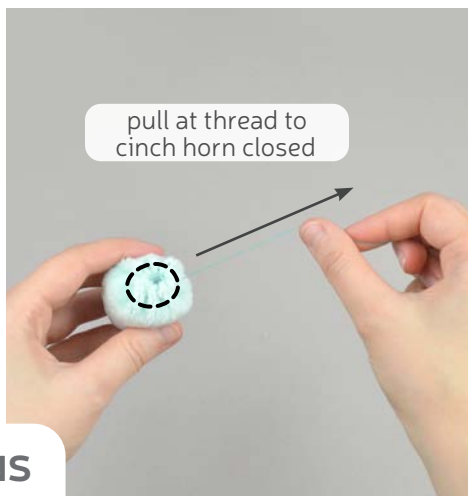
sew desu ne?

| [WWW.CHOLYKNIGHT.COM](http://WWW.CHOLYKNIGHT.COM) |



## 47. STUFF THE HORNS

- a. Trim the excess seam allowance at the tip of the **HORN** to reduce bulk.
- b. Turn the horn right side out.  
**FOR A DRAGON:** repeat with the remaining horn piece for two horns total.
- c. Stuff the horns lightly with stuffing when complete. Be sure to get small bits into the tip off the horn.



## 48. CINCH UP THE HORNS

- a. Hand sew a gathering stitch around the opening of the **HORN**.
- b. Pull at the thread of the gathering stitch to cinch the horn completely closed. Sew a few knots into the opening to hold it shut. If you have thread leftover, keep it attached for joining the horn to the head next.

### GATHERING:

The process of shortening the length of a piece of fabric by sewing long stitches through it. When the thread is pulled, it forms small folds that ruffle the fabric.

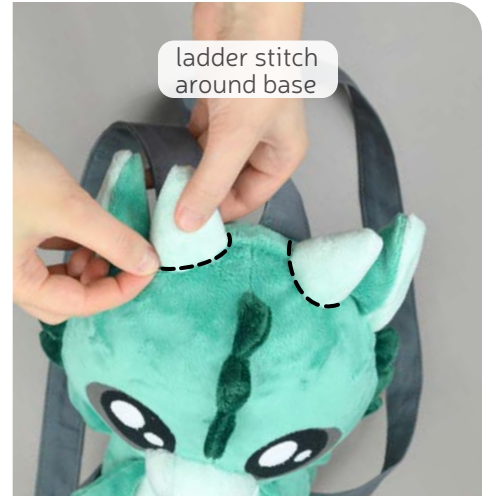
### GATHERING STITCH:

A long version of the running stitch, which is a stitch done by weaving the needle in and out of a length of fabric going along a line. The long stitches (about ¼"-½" long) gather the fabric when pulled later.

sew desu ne?

| [WWW.CHOLYKNIGHT.COM](http://WWW.CHOLYKNIGHT.COM) |





## 49. ATTACH THE HORNS

- Place the cinched end of the **HORN** on the top of the head. The cinched end should be facing the main fabric.  
**FOR A DRAGON:** the horns are placed right beside the ears.
- FOR A UNICORN:** place the horn right beneath the mane. The shape of the mane should swerve around the horn.
- Hold the horn in place by sticking pins down into the base of the horn and through the head. Stitch the horn to the head with a ladder stitch around the base.



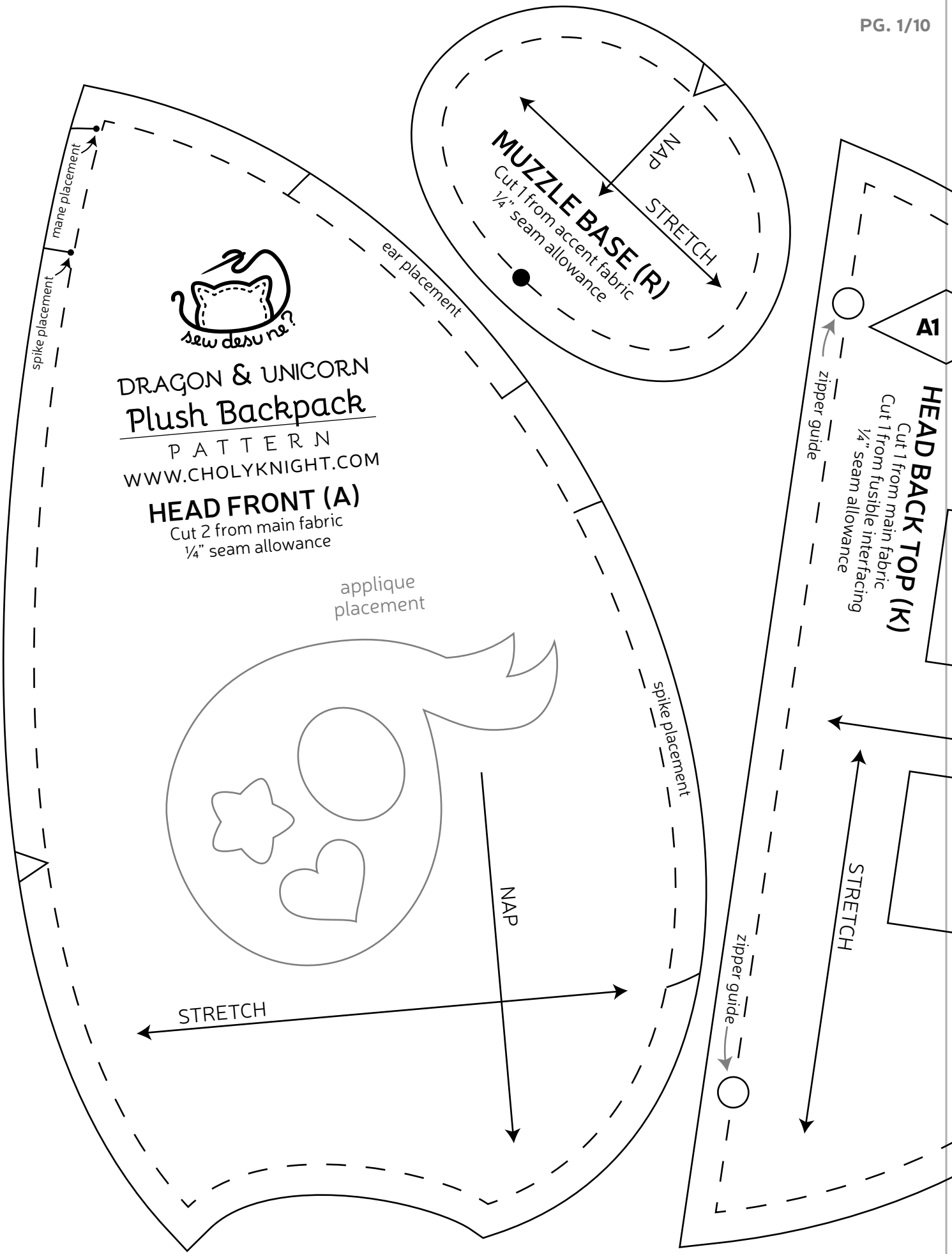
## 50. SECURE THE TAIL

- Since the back of the dragon will be flat against your back when worn, it's helpful to secure the **TAIL** so it doesn't move. Flip the tail so it lies flush against one side of the body or the other as you prefer.
- Ladder stitch the inside of the tail to the body. Go back and forth once or twice to secure it strongly for all the wear it will endure.

**CONGRATS!**  
This completes  
your backpack!  
Now go try it  
on!

sew desu ne?

| WWW.CHOLYKNIGHT.COM |



DRAGON & UNICORN  
**Plush Backpack**  
 P A T T E R N  
 WWW.CHOLYKNIGHT.COM  
**HEAD FRONT (A)**  
 Cut 2 from main fabric  
 1/4" seam allowance

**MUZZLE BASE (R)**  
 Cut 1 from accent fabric  
 1/4" seam allowance

**HEAD BACK TOP (K)**  
 Cut 1 from main fabric  
 1/4" seam allowance



applique placement

mane placement  
 spike placement

ear placement

spike placement

zipper guide

zipper guide

STRETCH

NAP

NAP

STRETCH

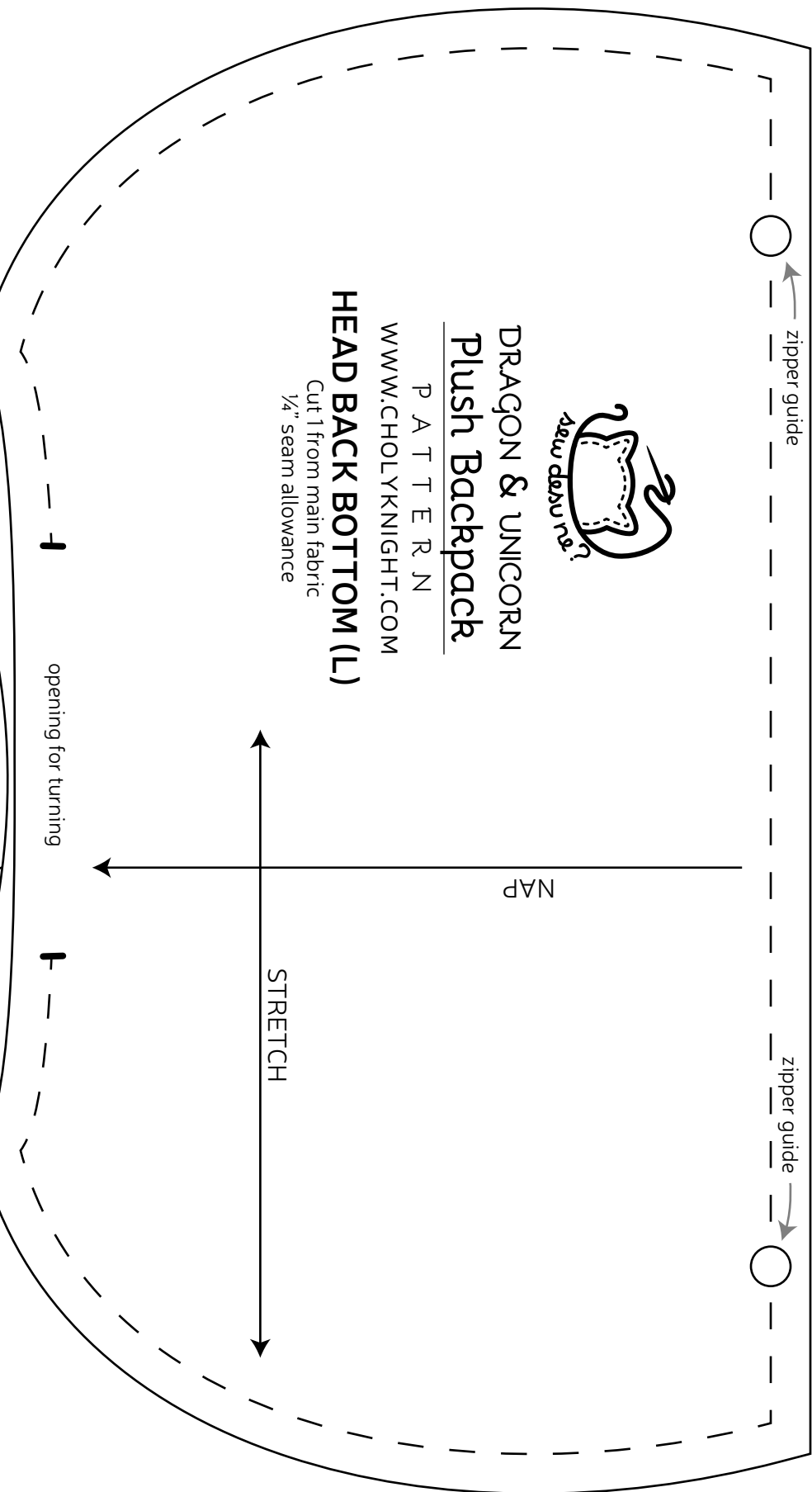
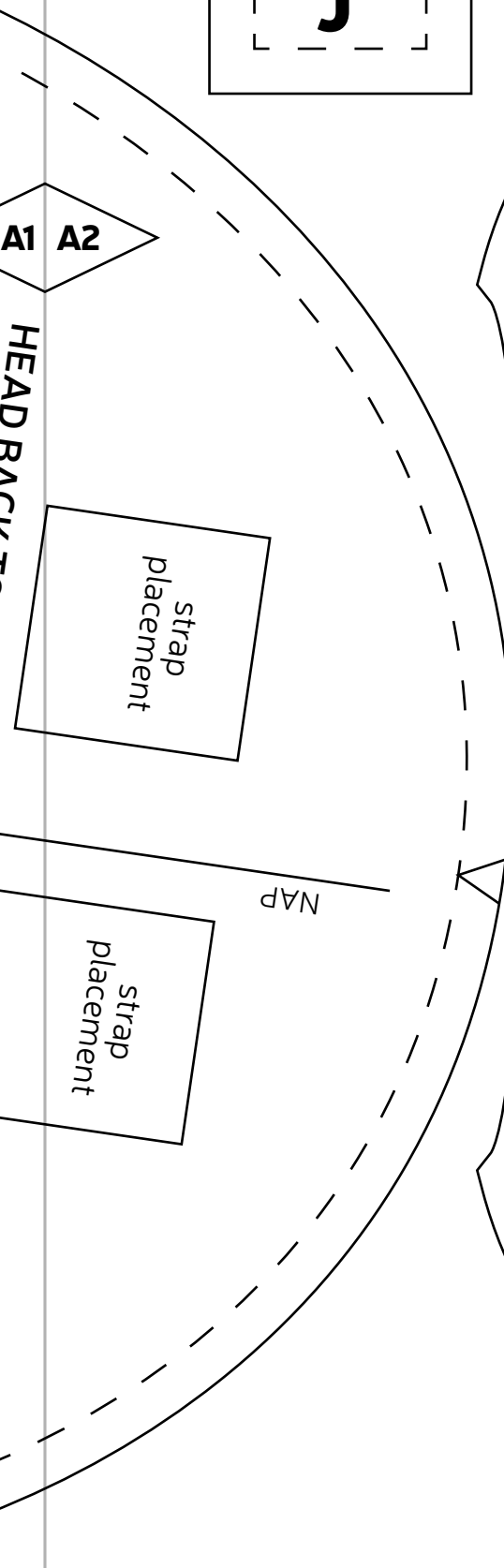
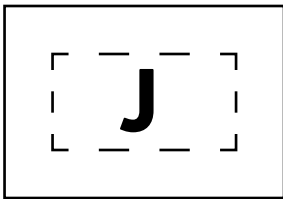
STRETCH

A1 A2

placement

### ZIPPER TAB (J)

Cut 2 from main fabric  
Cut 2 from fusible interfacing  
1/4" seam allowance



DRAGON & UNICORN  
Plush Backpack

P A T T E R N  
WWW.CHOLYKNIGHT.COM

### HEAD BACK BOTTOM (L)

Cut 1 from main fabric  
1/4" seam allowance

zipper guide

zipper guide

opening for turning

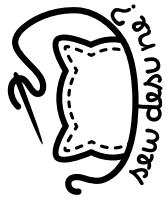
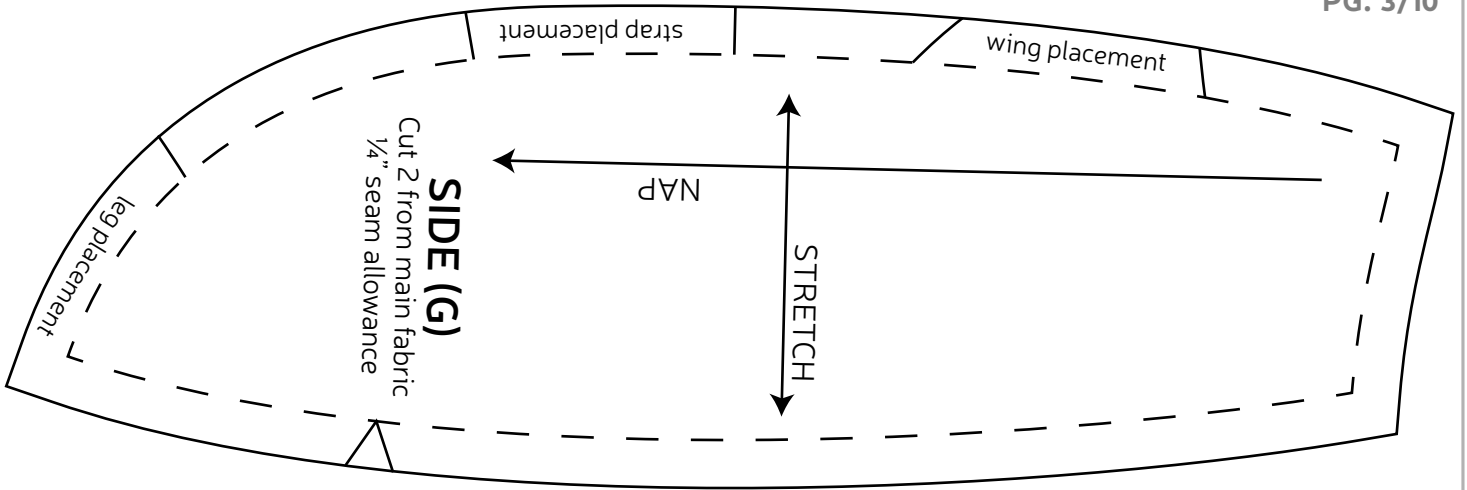
NAP

STRETCH

HEAD BACK

strap placement

strap placement

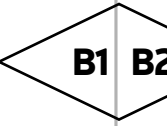
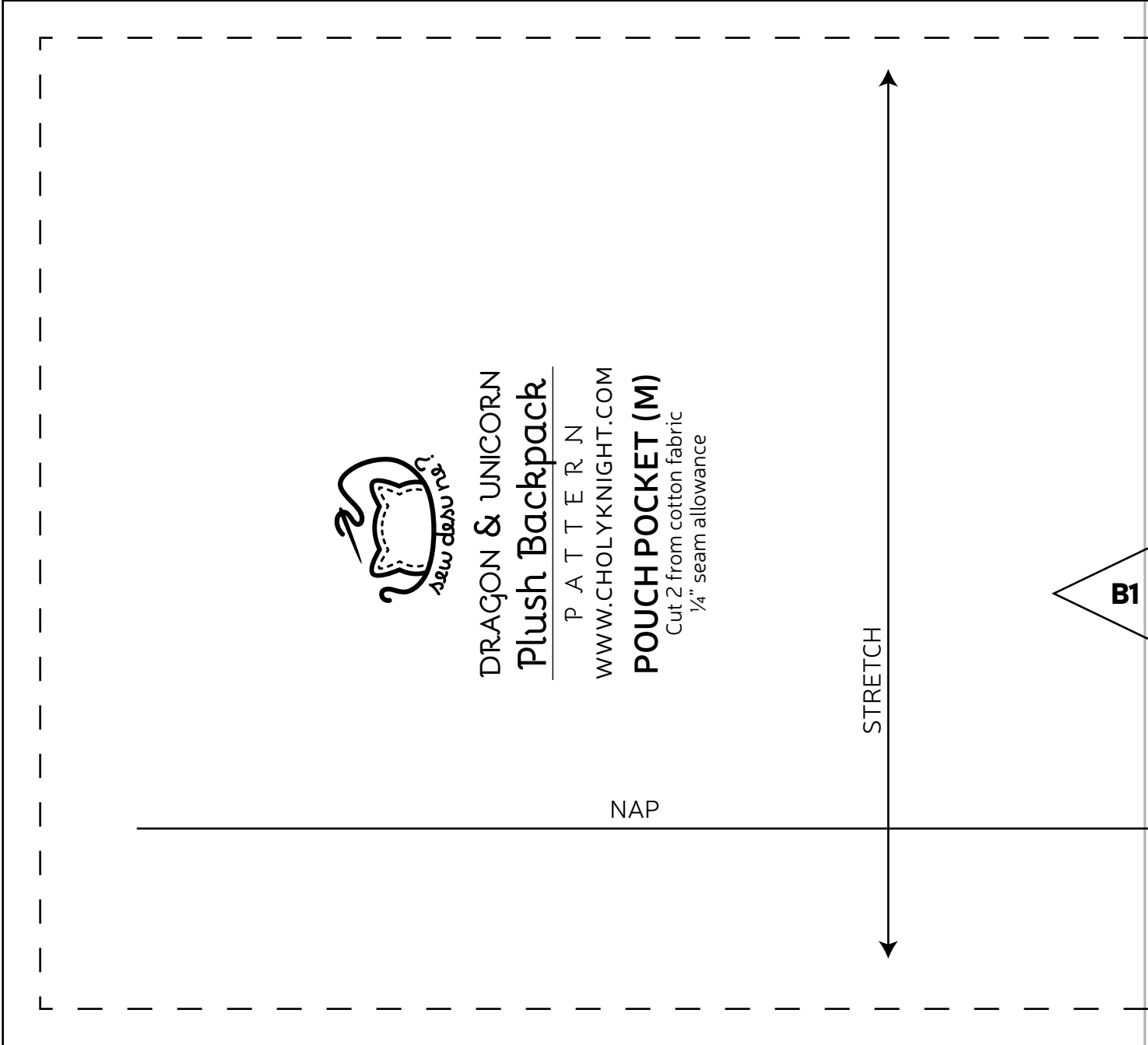


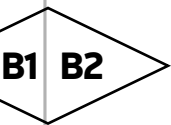
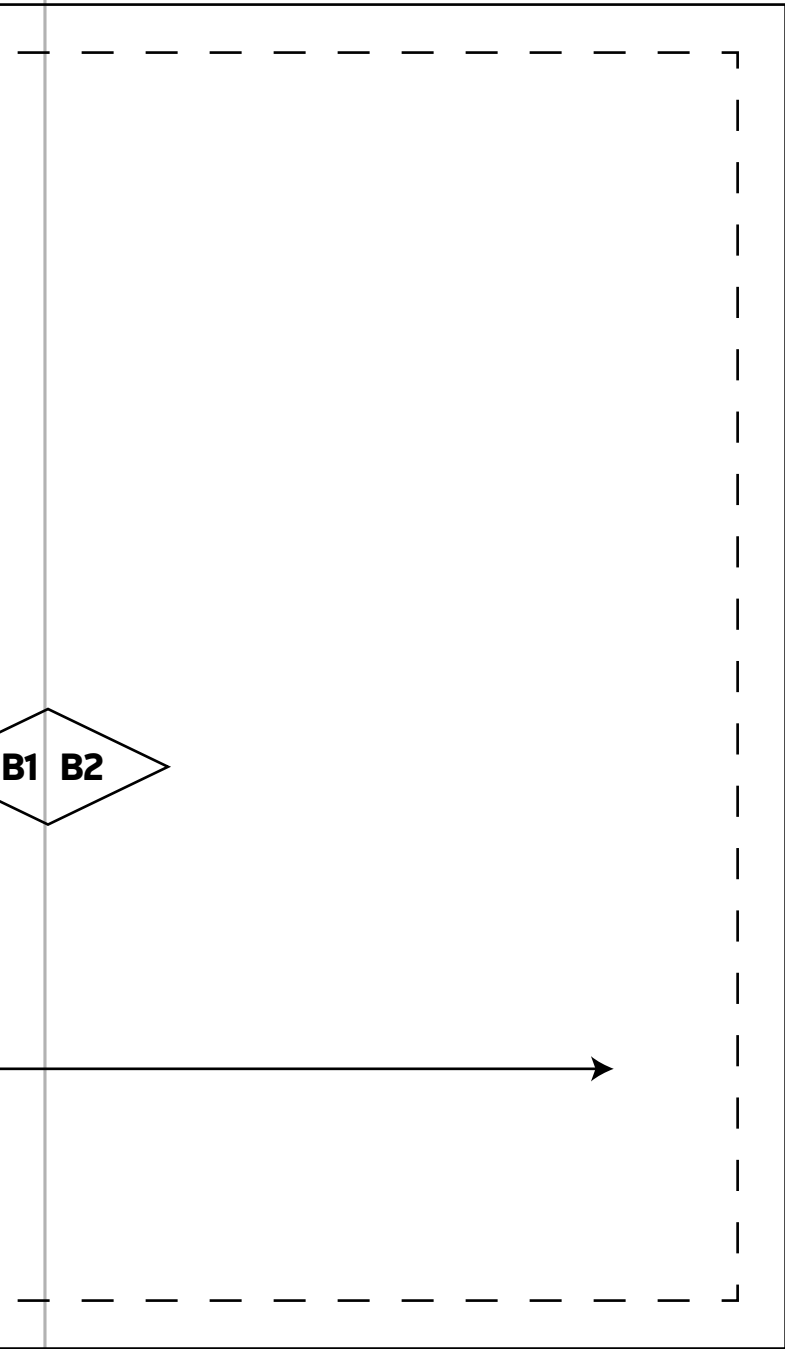
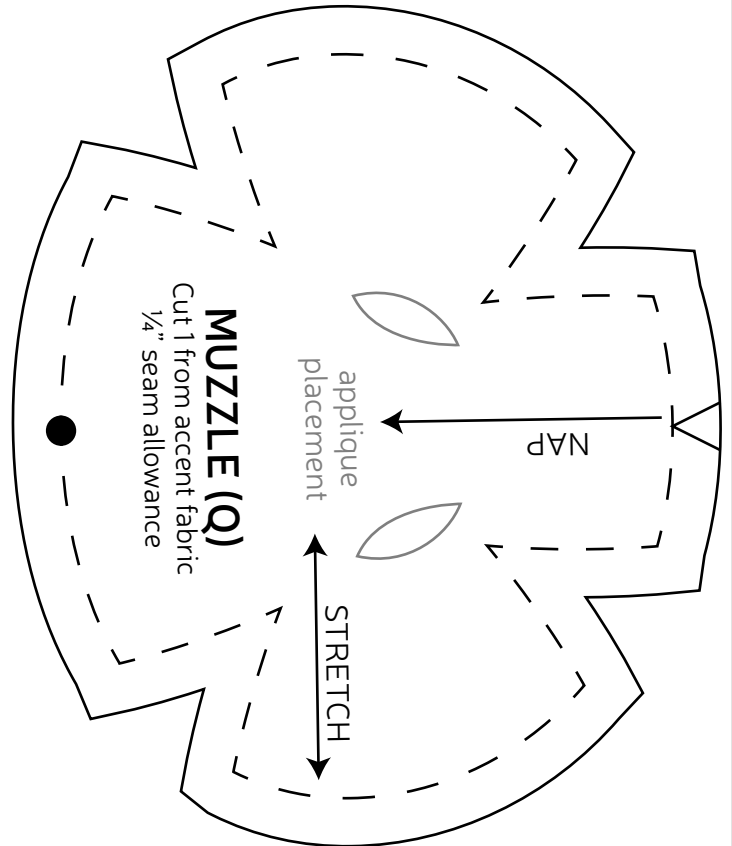
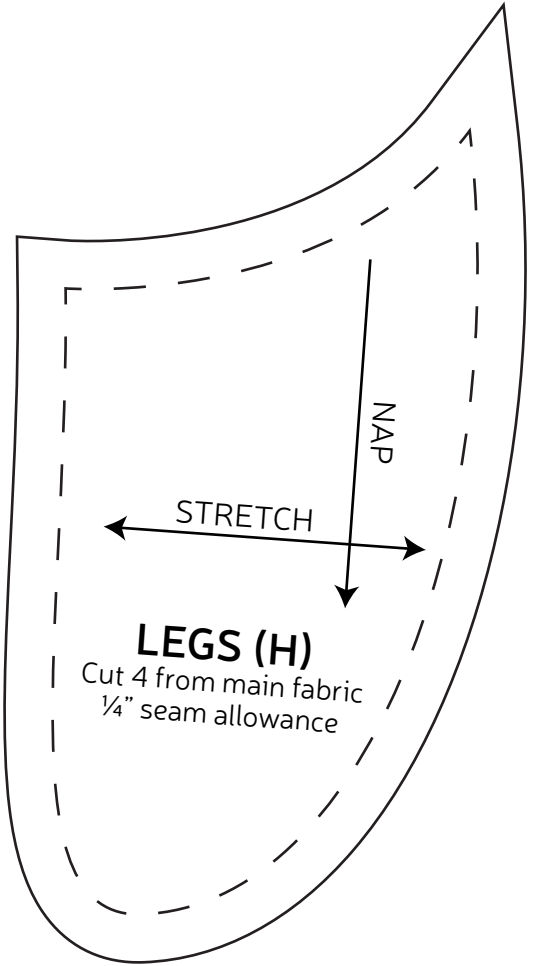
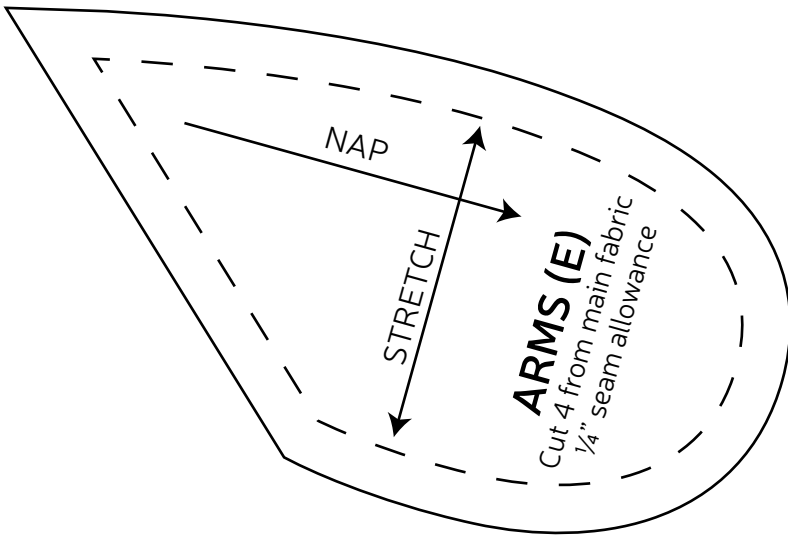
**DRAGON & UNICORN**  
**Plush Backpack**

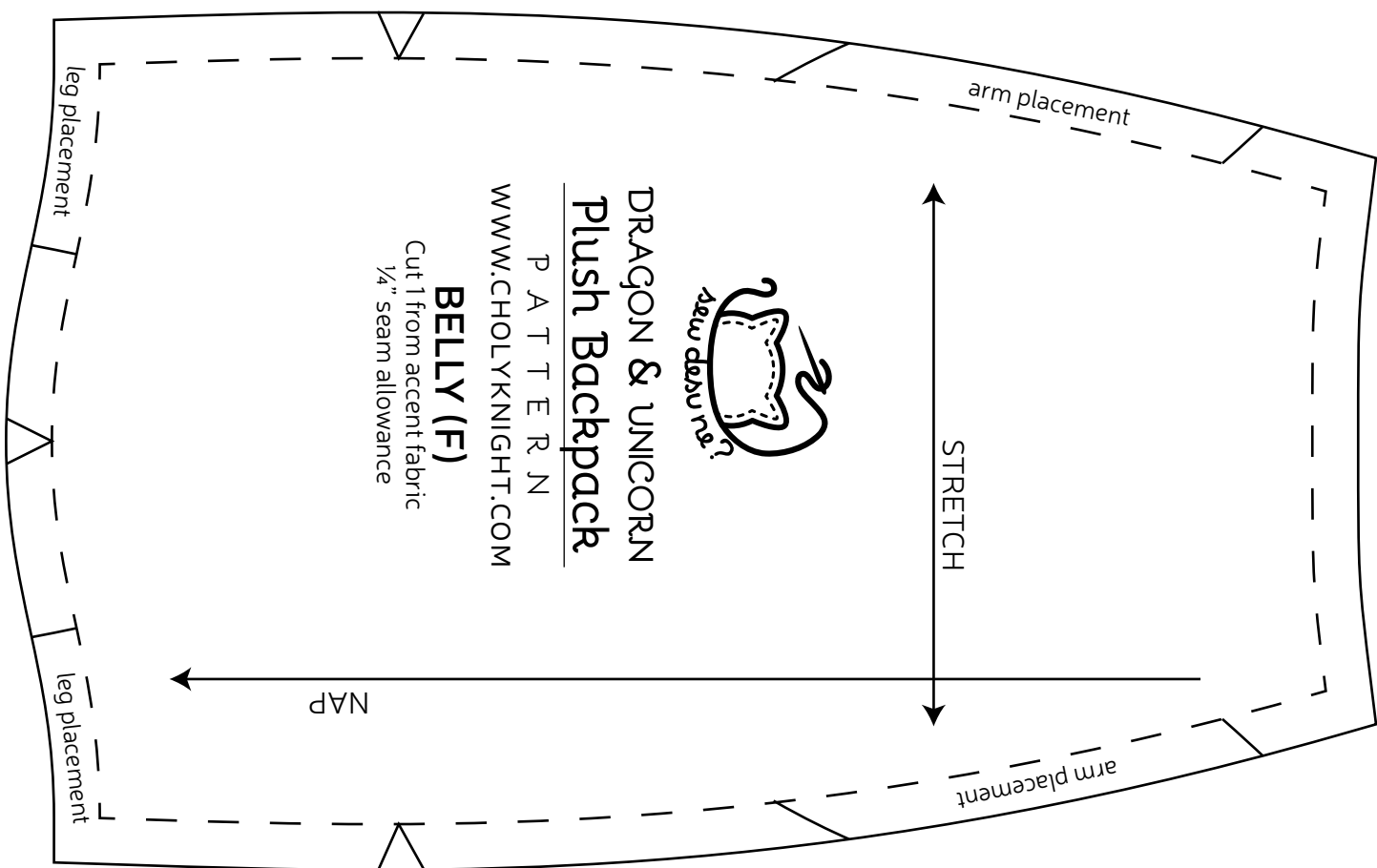
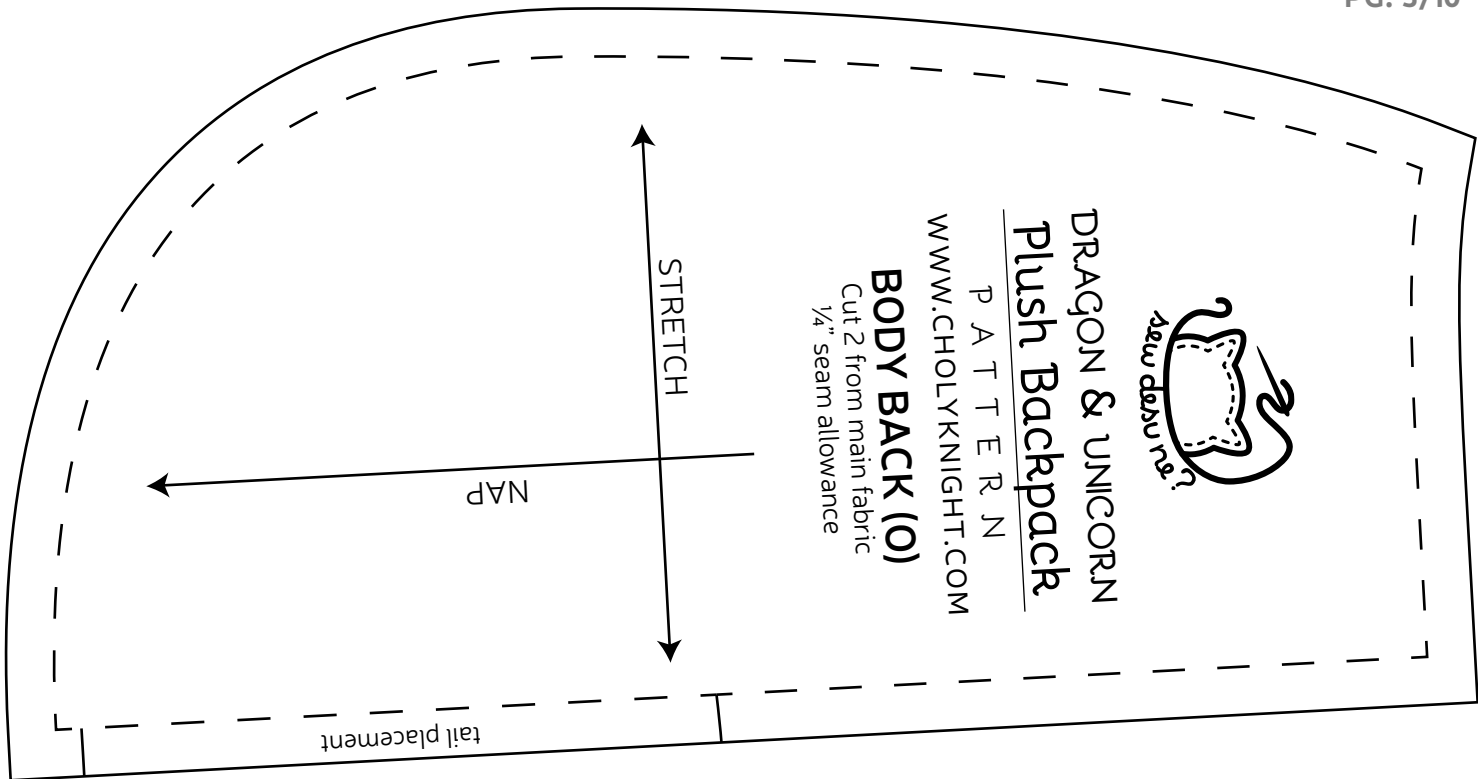
P A T T E R N  
[WWW.CHOLYKNIGHT.COM](http://WWW.CHOLYKNIGHT.COM)

**POUCH POCKET (M)**

Cut 2 from cotton fabric  
1/4" seam allowance







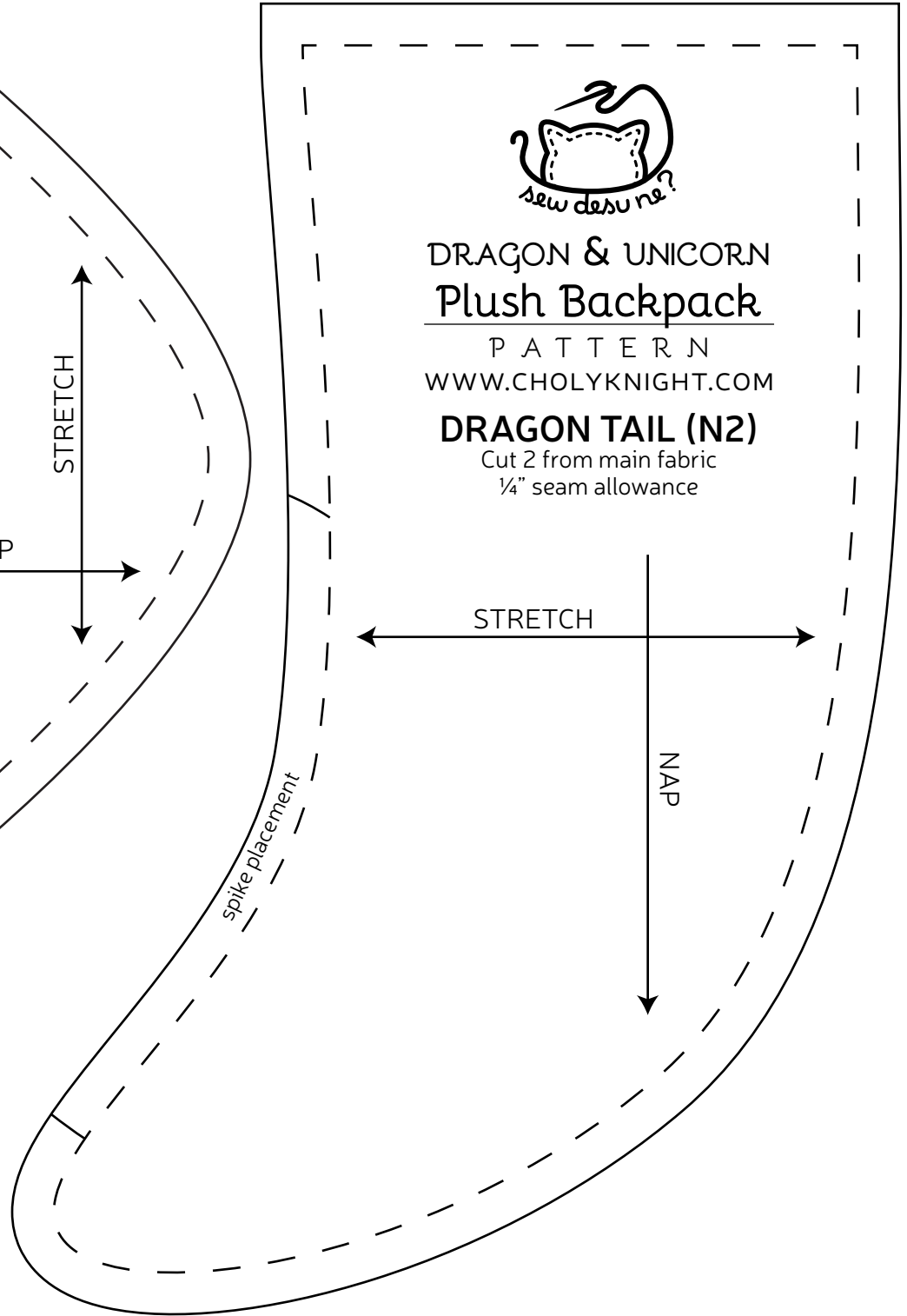
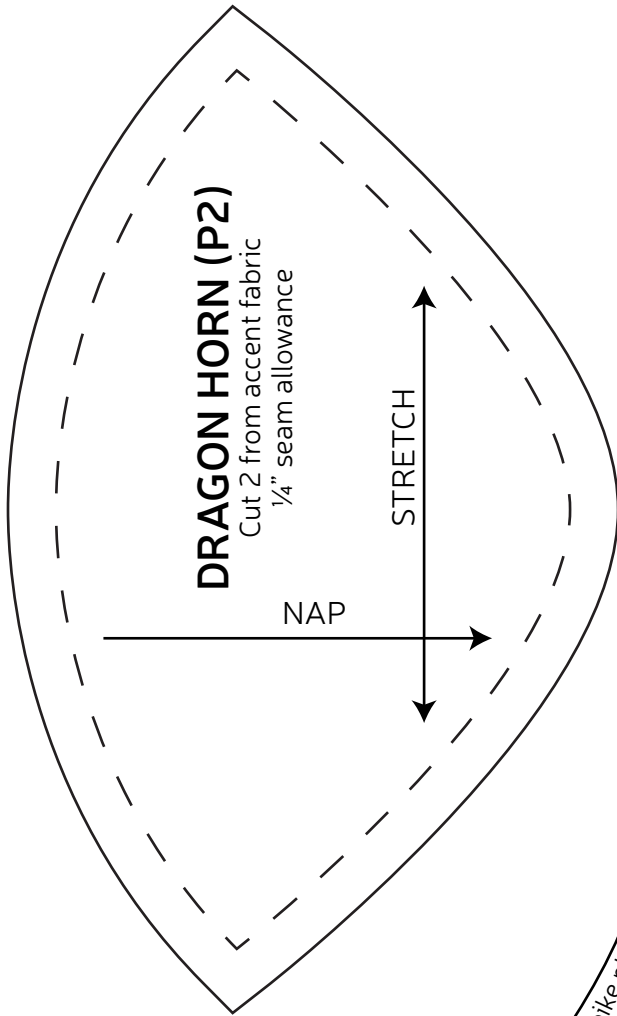


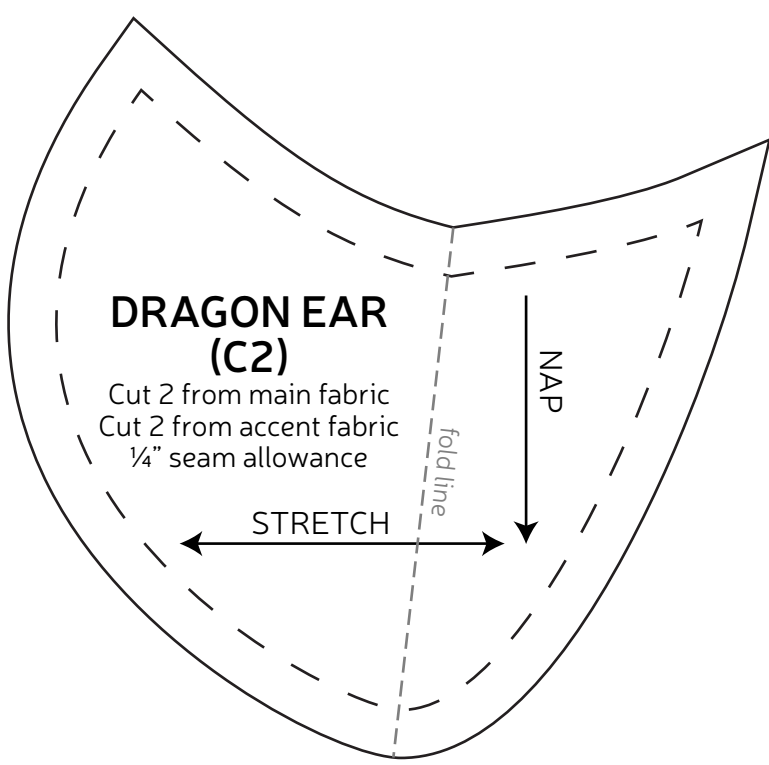
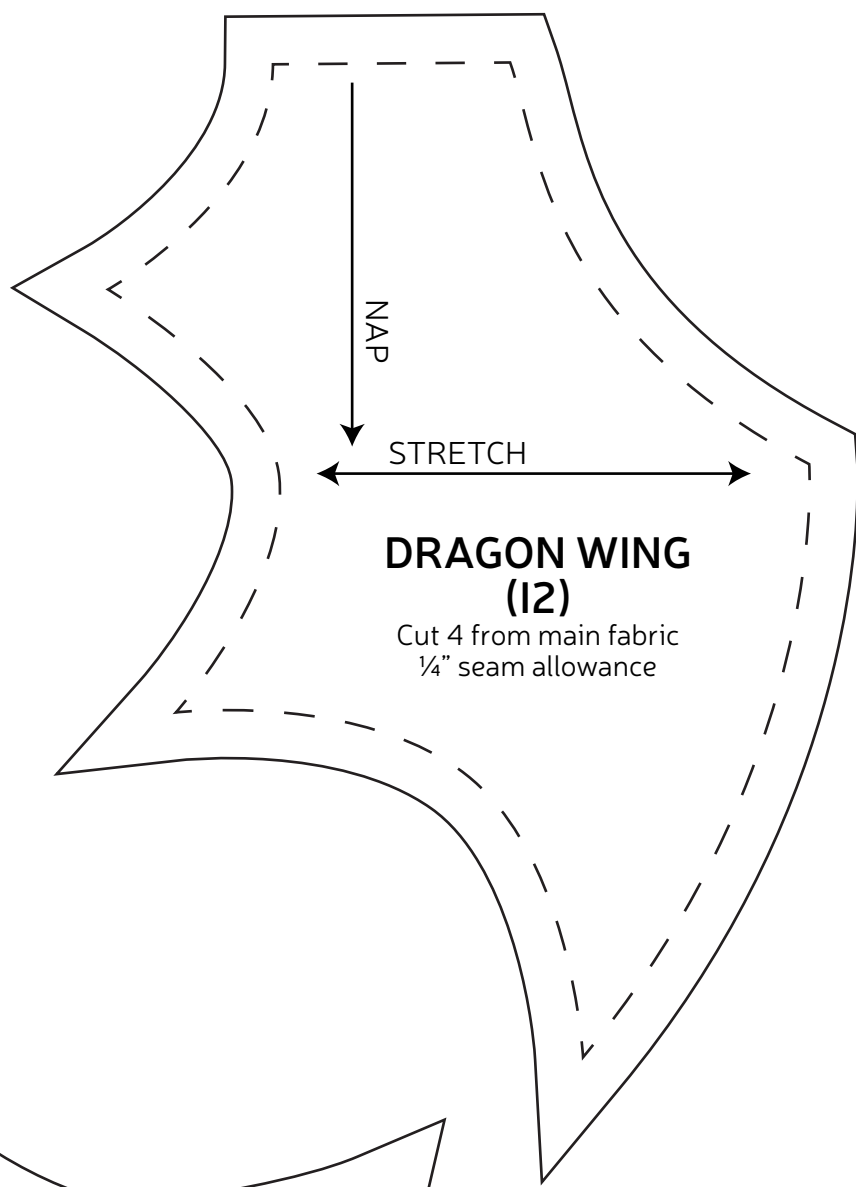
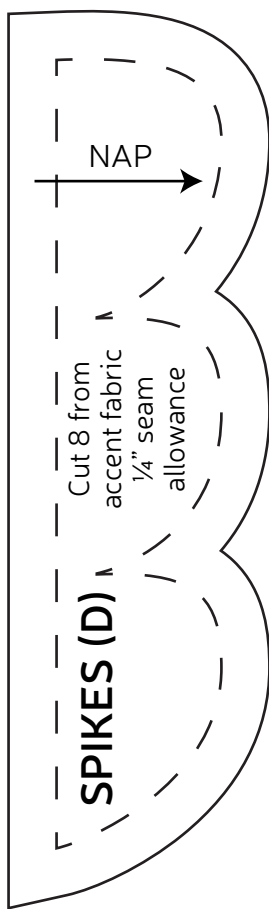
**DRAGON & UNICORN  
Plush Backpack**

P A T T E R N  
WWW.CHOLYKNIGHT.COM

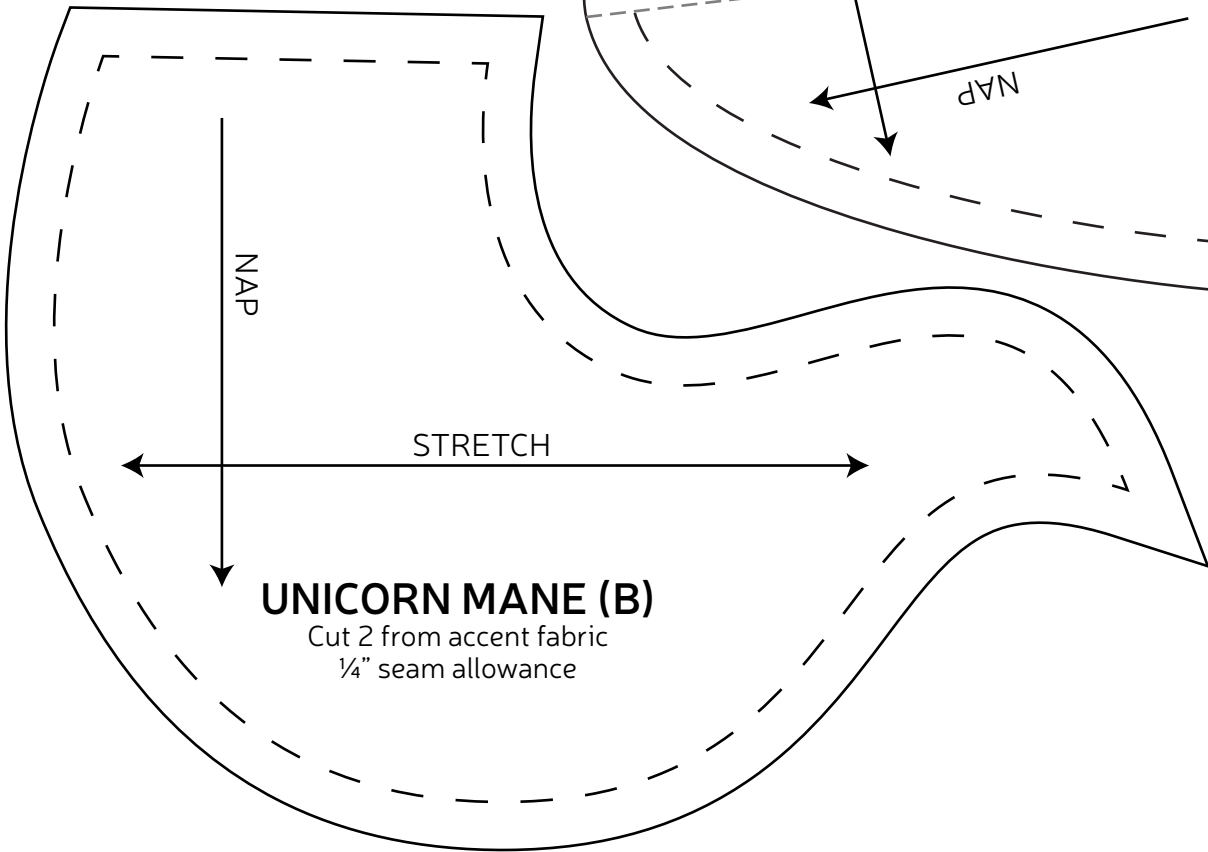
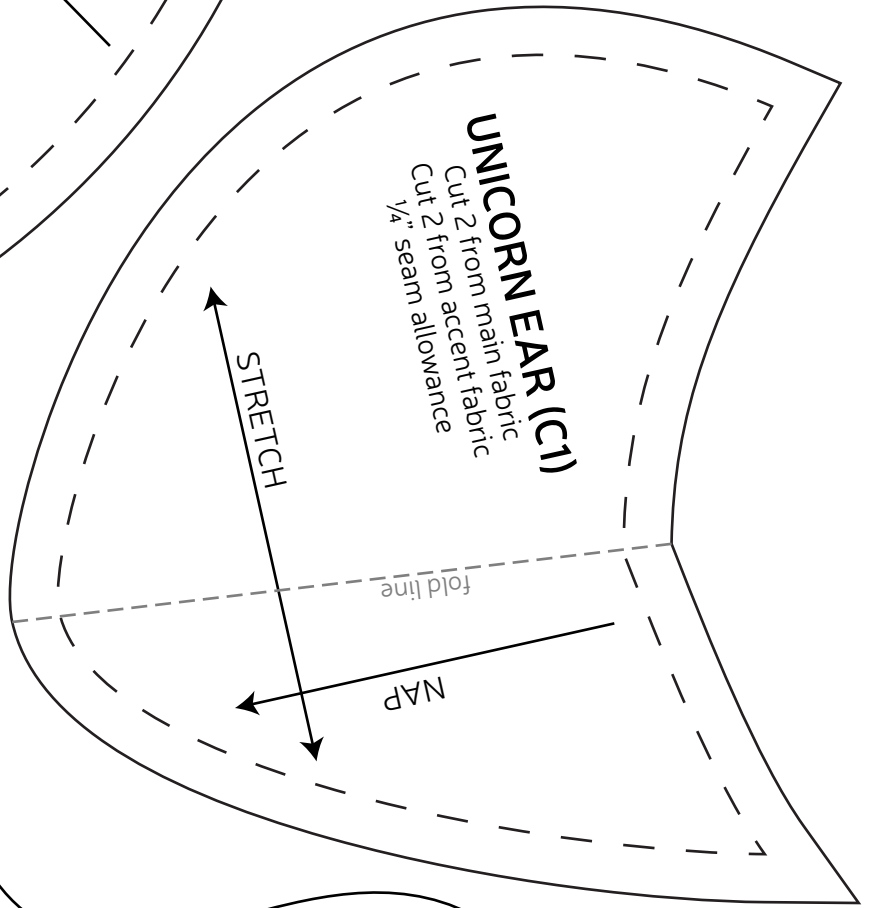
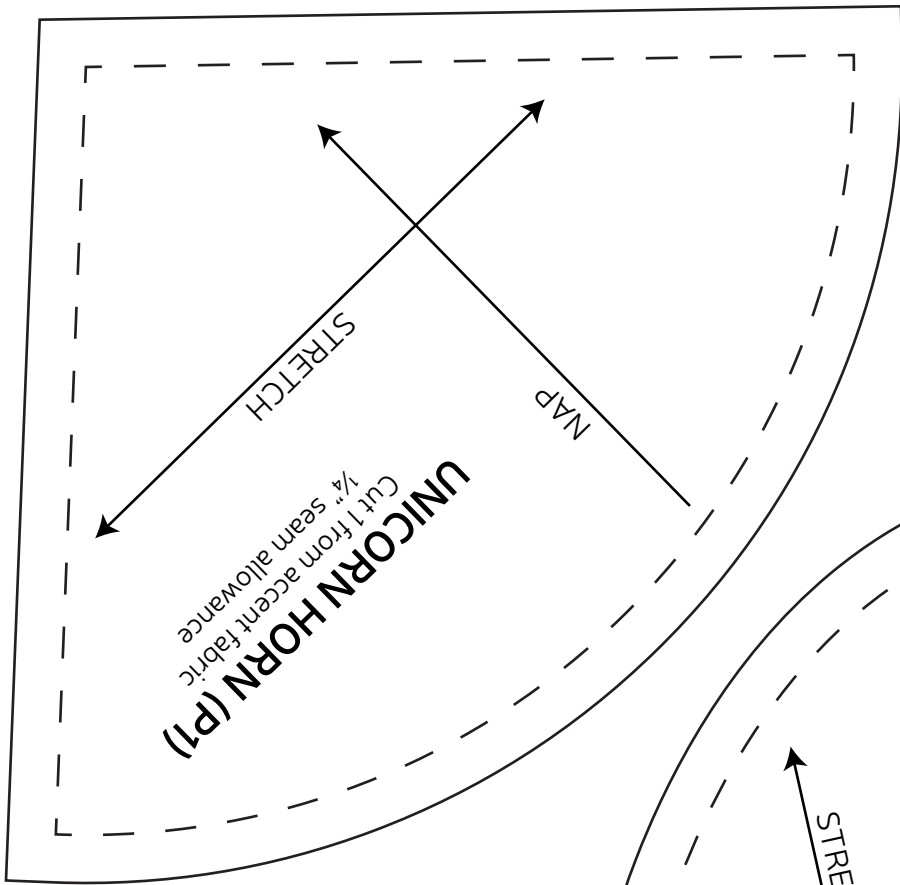
**DRAGON TAIL (N2)**

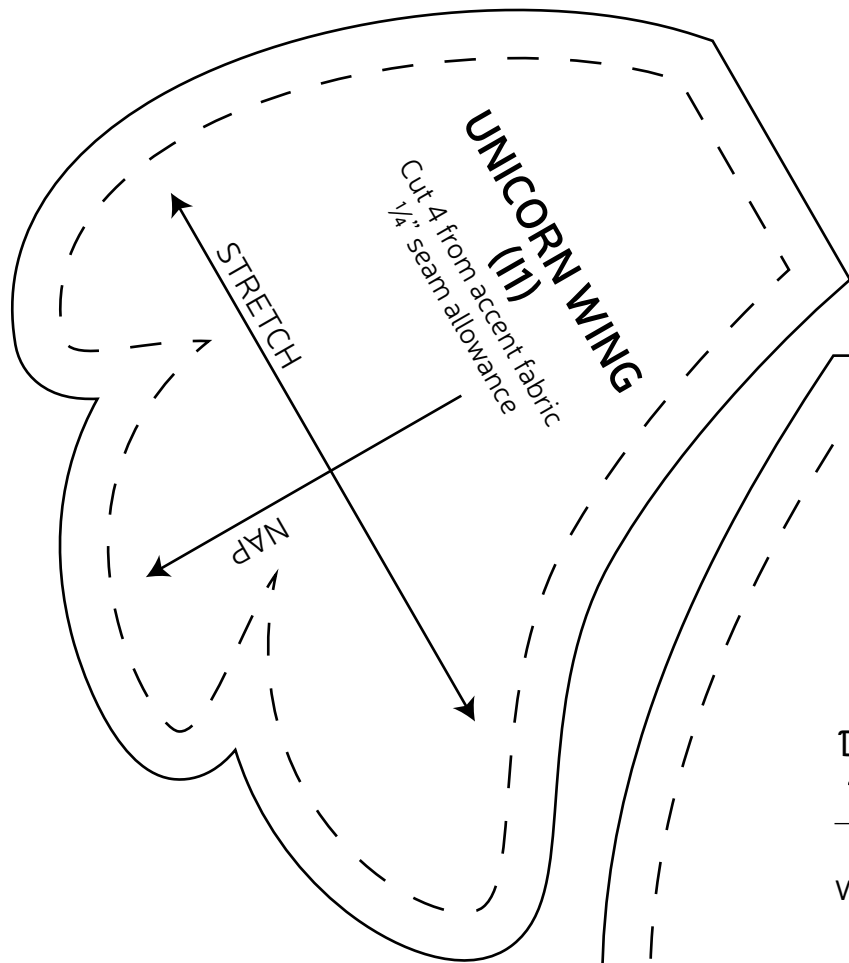
Cut 2 from main fabric  
1/4" seam allowance











**DRAGON & UNICORN  
Plush Backpack**

P A T T E R N  
WWW.CHOLYKNIGHT.COM

**UNICORN TAIL (N1)**

Cut 2 from accent fabric  
1/4" seam allowance

